

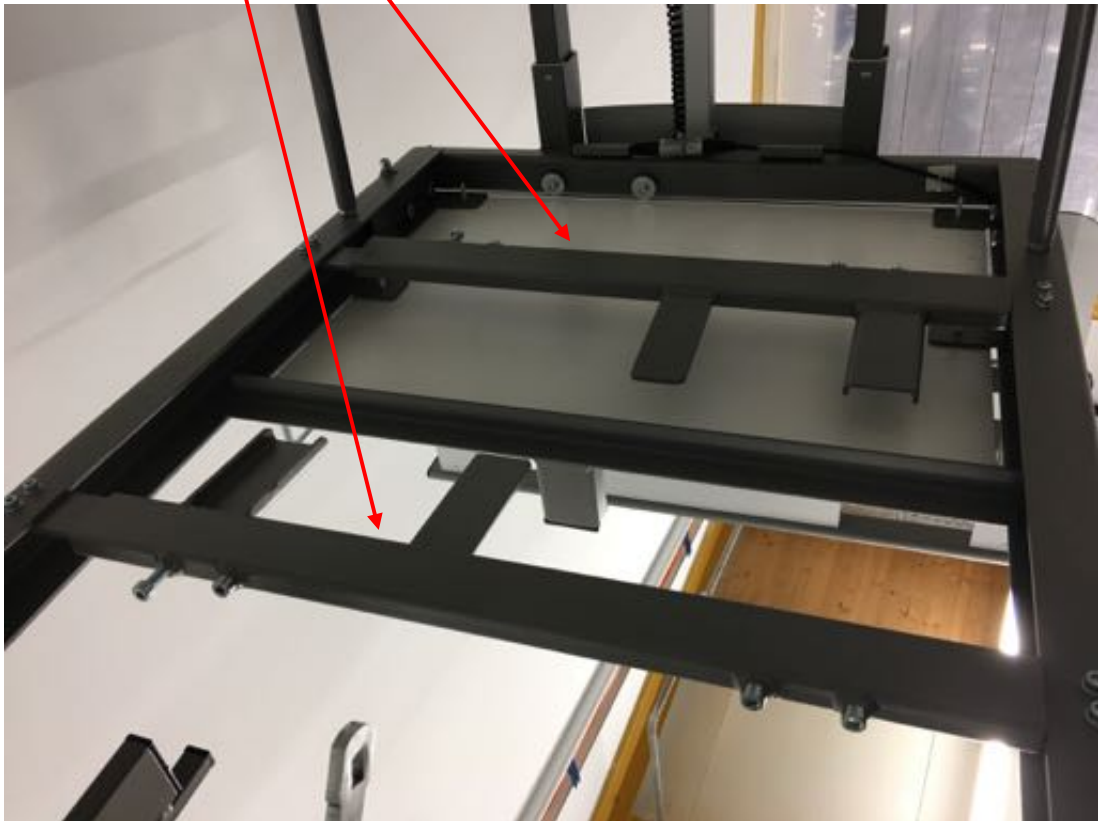
# Dismounting of the RotoFlex Basic

## Transforming to a transport trolley

The necessary tools are located under the upper part of the bed frame in the cap at the middle end of the rotary axle.

Tools: Allen wrench 5, 6, 8

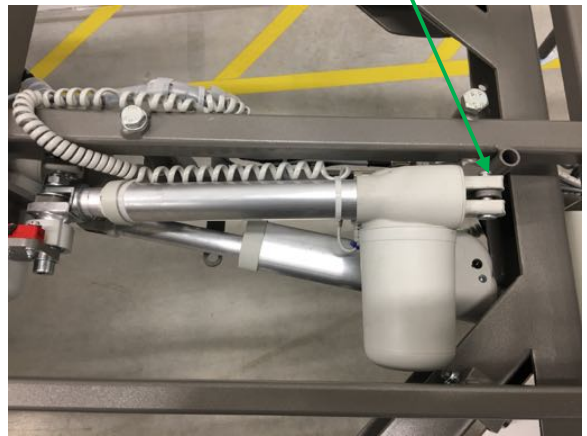
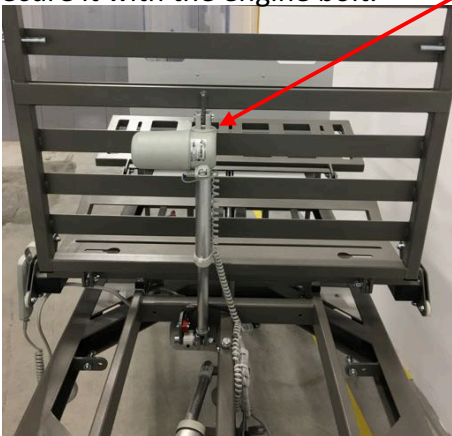
1. Move the bed on maximum height in the lying position and flatten the lying surface.
2. Dismount the **transport devices** under the leg section. You need to unscrew the screws.



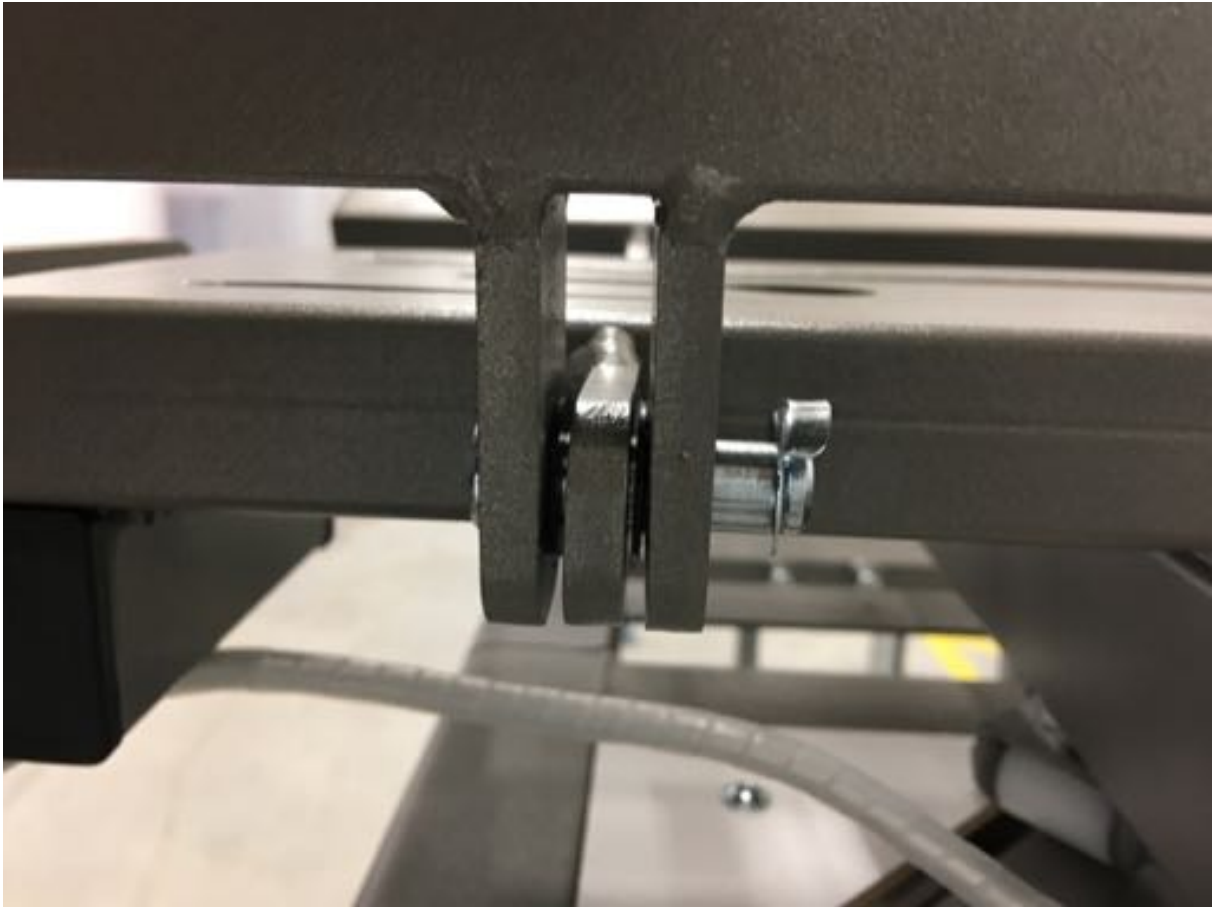
3. Remove the 6 adjustable feet
4. Screw in the 6 feet at the provided



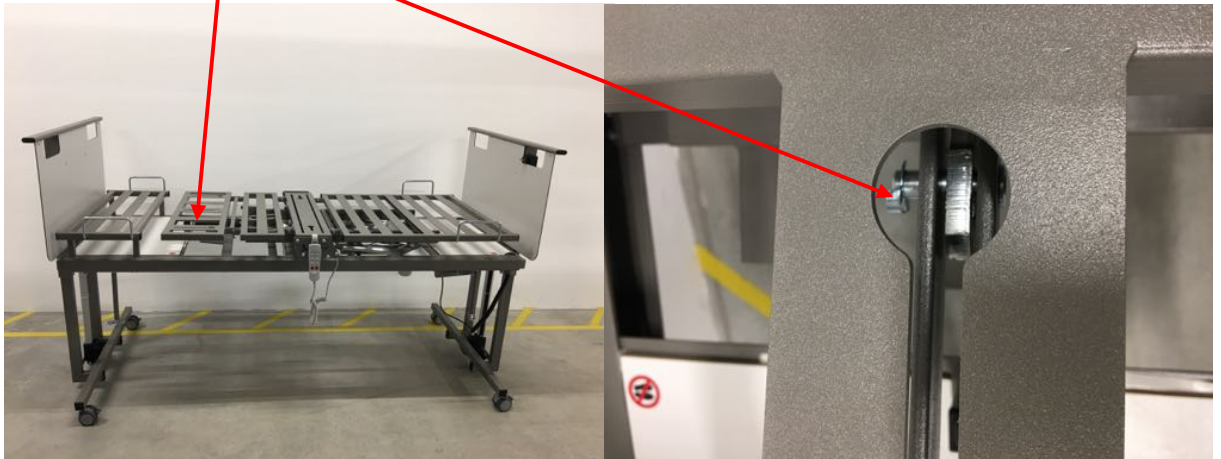
5. Fold up the back section by hand, **unhook the upper engine bolt**, fold down the back motor, slide in the lifting tube and insert the clevis head into the **provided holder** and secure it with the engine bolt.



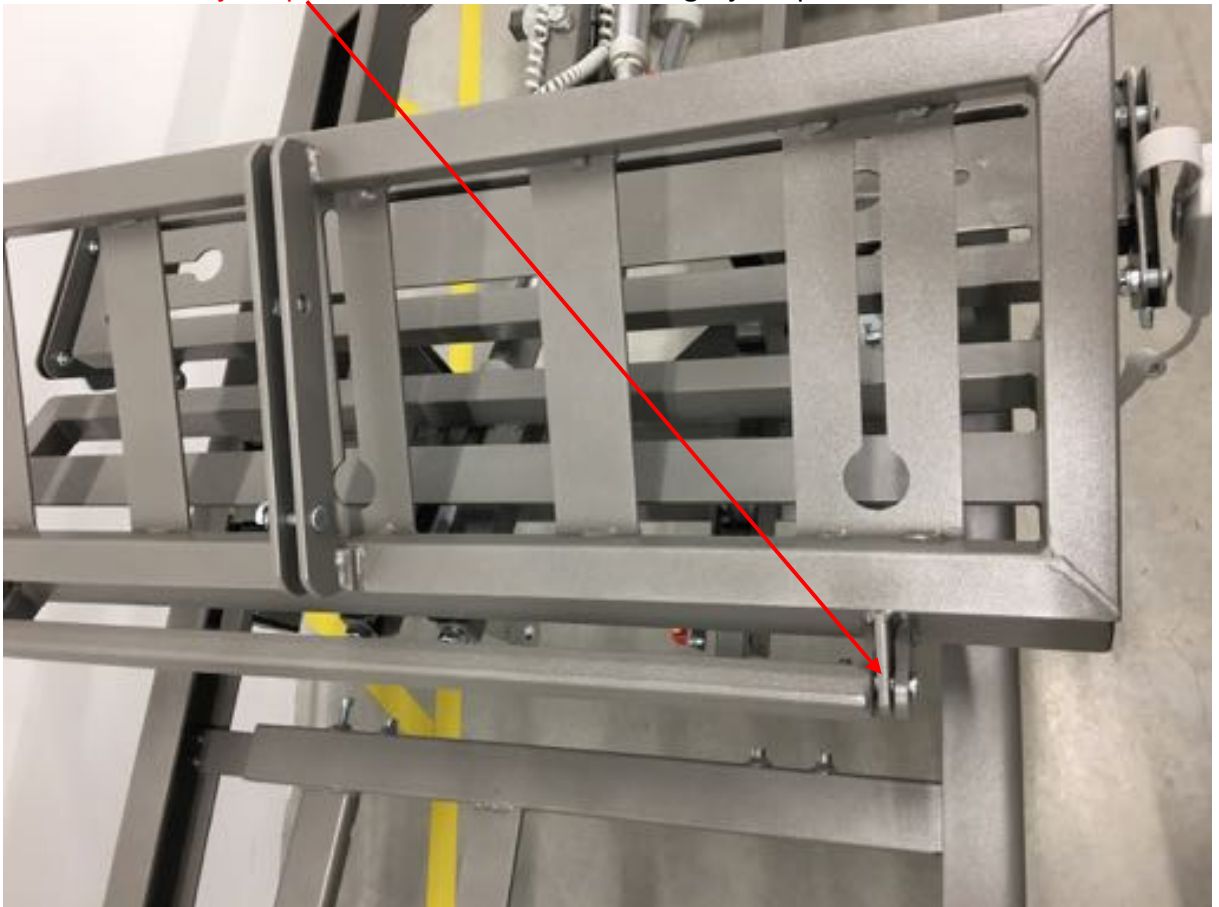
6. Fold down the back section, remove the two hinge pins, remove the back section and replace and secure the motor bolts in the hinge plates.



7. Remove the **hinge pin** from the motor coupling rod, on the lower leg section.



8. Remove the joint pins on the lower leg section. Then remove the lower leg section and reinsert the **joint pins** and secure them for storage. joint pins



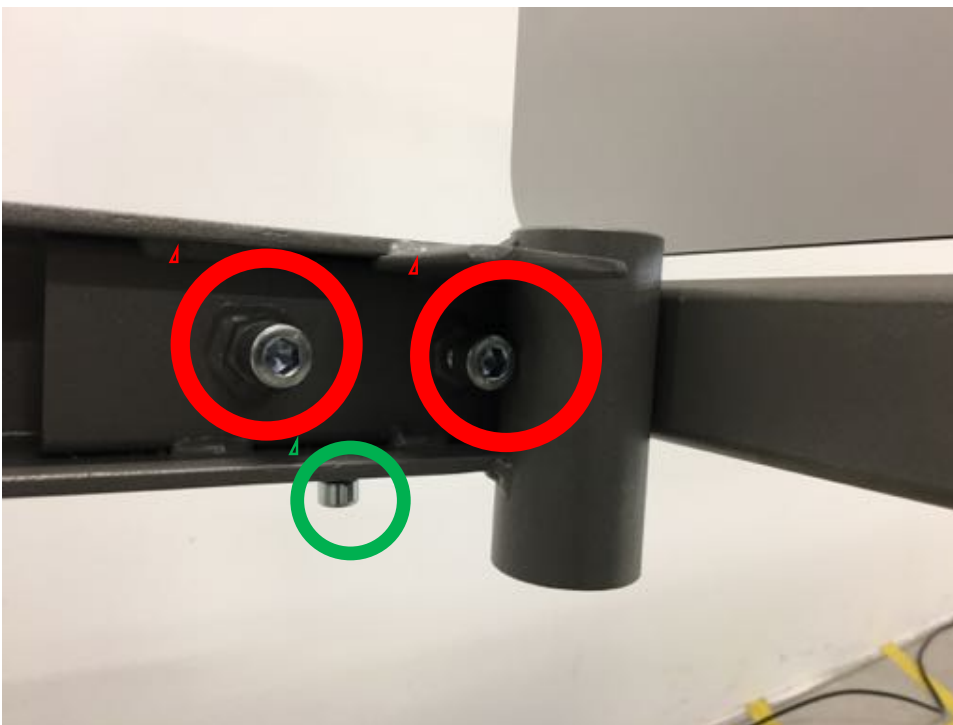
9. Remove the hinge pins from the upper leg section. Then remove the upper leg section from the lifting motor. Reinsert the hinge pins and secure them for storage. Place the lifting motor leg section on the frame and leave the coupling rod and guide rollers (secured by toothed pulleys) on the frame.



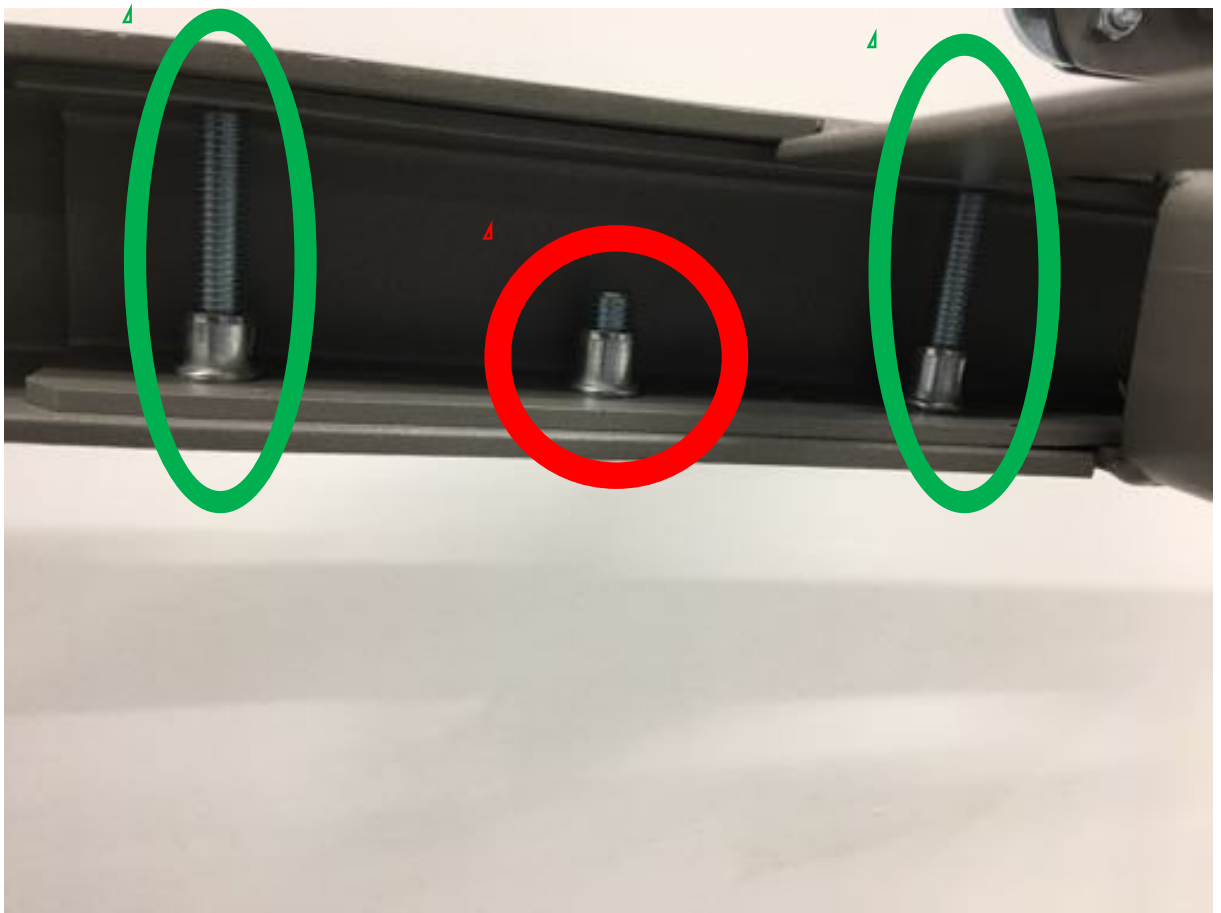
10. Slightly press the swivel frame at the head end against the direction of rotation so that the **rotating stop pin** can be removed. Now pull out the **motor bolt** from the rotary motor on the axis of rotation and insert the motor clevis into the holder underneath and replace the motor bolt.



11. At the head and foot ends of the bed frame from below, loosen the 4 screws **M10** of the lifting units on the inside. unscrew the screws only so far that they can be easily turned by hand.
12. Unscrew the four **M8 securing screws** on the underside almost completely.



13. Loosen the middle **locking screws** on the middle connector of the top frame. **Do not unscrew!**
14. There a **2 stud bolts** per side. Unscrew them **maximum 2 rotations!**



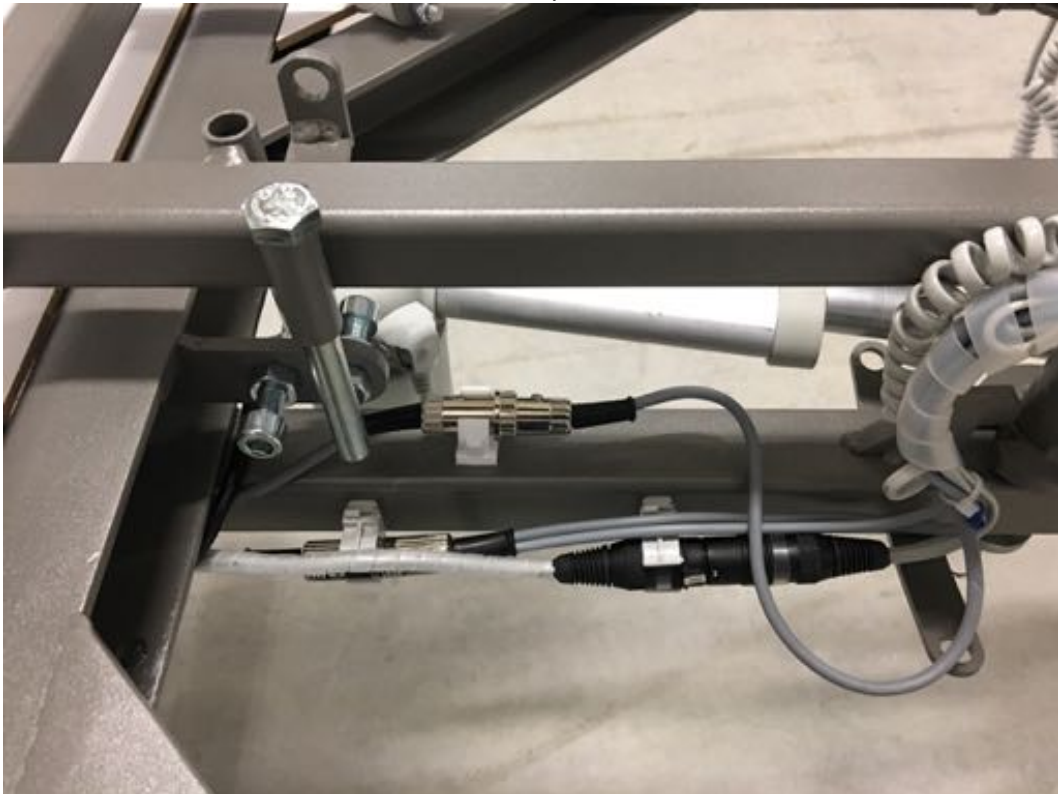
15. Pull out the **split pin from the central screw** of the swivel frame on the underside, remove the knurled nut and remove the screw. Screw the nut back on and slide in the split pin and put it down for storage.



16. Now move the bed to the lowest position by the manual switch. The six adjustable feet will be placed on the ground and the lifting units will lift off from the ground.



17. Disconnect the three cable couplings next to the rotary axis. The cable ends at the head end remain in the brackets on the top frame.



18. Disconnect the cable coupling from the lifting motor at the head and foot ends and disconnect the cable coupling at the middle frame separation point.



19. Lock the brakes at the head and foot ends. The head or foot end can now be removed and placed to the side.





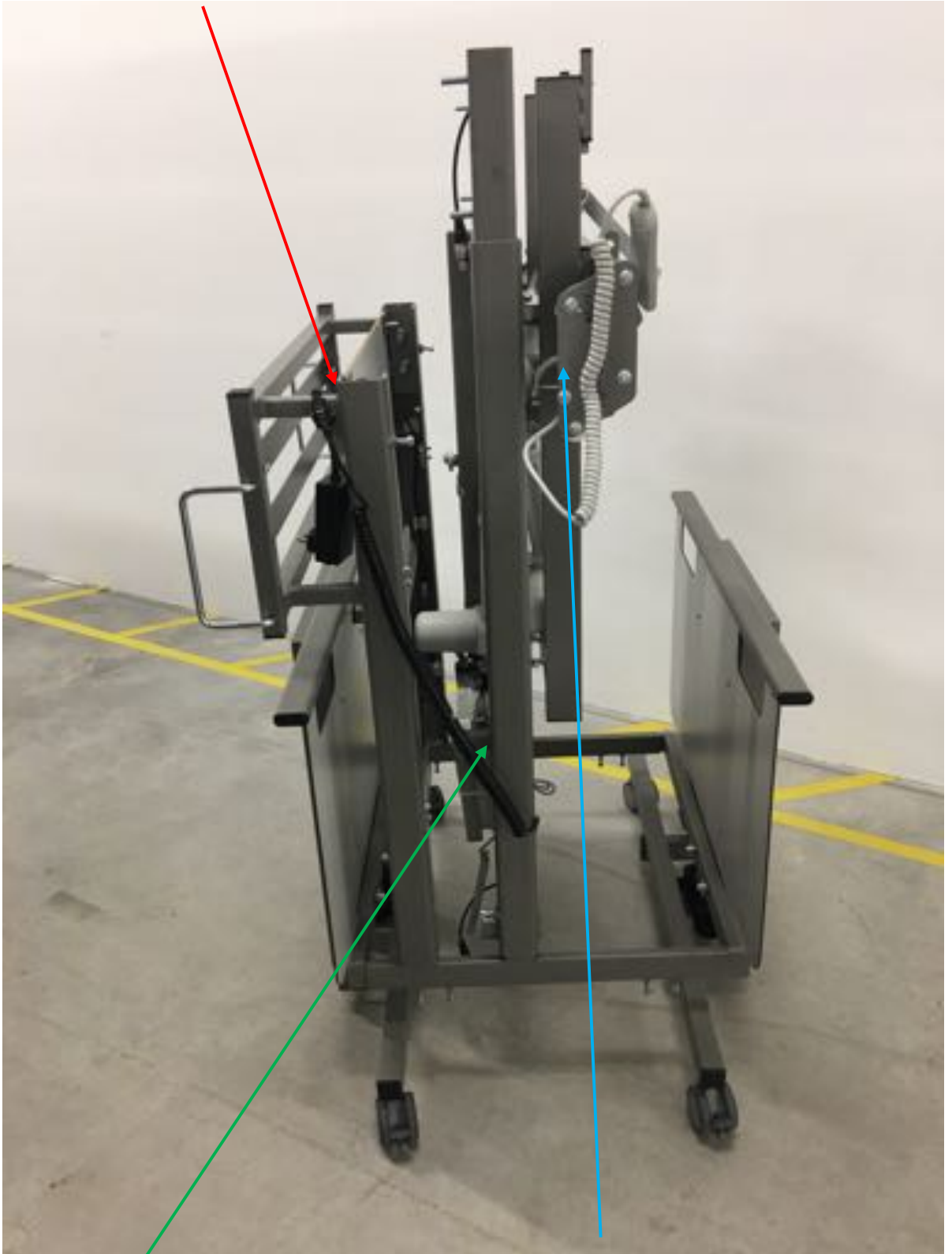
20. Head and foot ends can now be connected by means of the transport devices and their locking screws are screwed in.



21. Unscrew the two **locking screws** completely from the middle connector of the bed frame. Upper and lower frame can now be separated from each other.



22. **The lower part of the bed** frame can now be inserted in the transport trolley with the footrest facing up and outside. Unscrew the adjustable feet beforehand and reinstall them in the respective holder.



23. **The upper part of the bed** frame is also inserted in the transport trolley with the head end facing downwards and the underside facing the lower part of the frame.
24. **The swivel frame** is put back on the pivot axis and the central screws are reinserted and secured. The rotating stop pin is inserted into the middle holder so that the rotating frame is fixed.

25. **The backrest**, hanging downwards, is reinserted but only fastened with the hinge pins. The back engine remains in its transport bracket.



26. **The upper leg section** is pushed back onto the leg section motor and secured with the hinge pins.

27. **The lower leg section** is reattached to the upper leg section by using the hinge pins.

28. The side rails can be inserted in the holder in the head and foot end.
29. The mattress is first inserted into the holders on the lower leg section and pushed to the end. The rest of the mattress is inserted between the reclining surface and the headboard and secured with anchors in the seating area.



**The RotoFlex Basic is ready for transport or storing.**

# Mounting of the RotoFlex Basic

## Transforming to a bed from the transport trolley

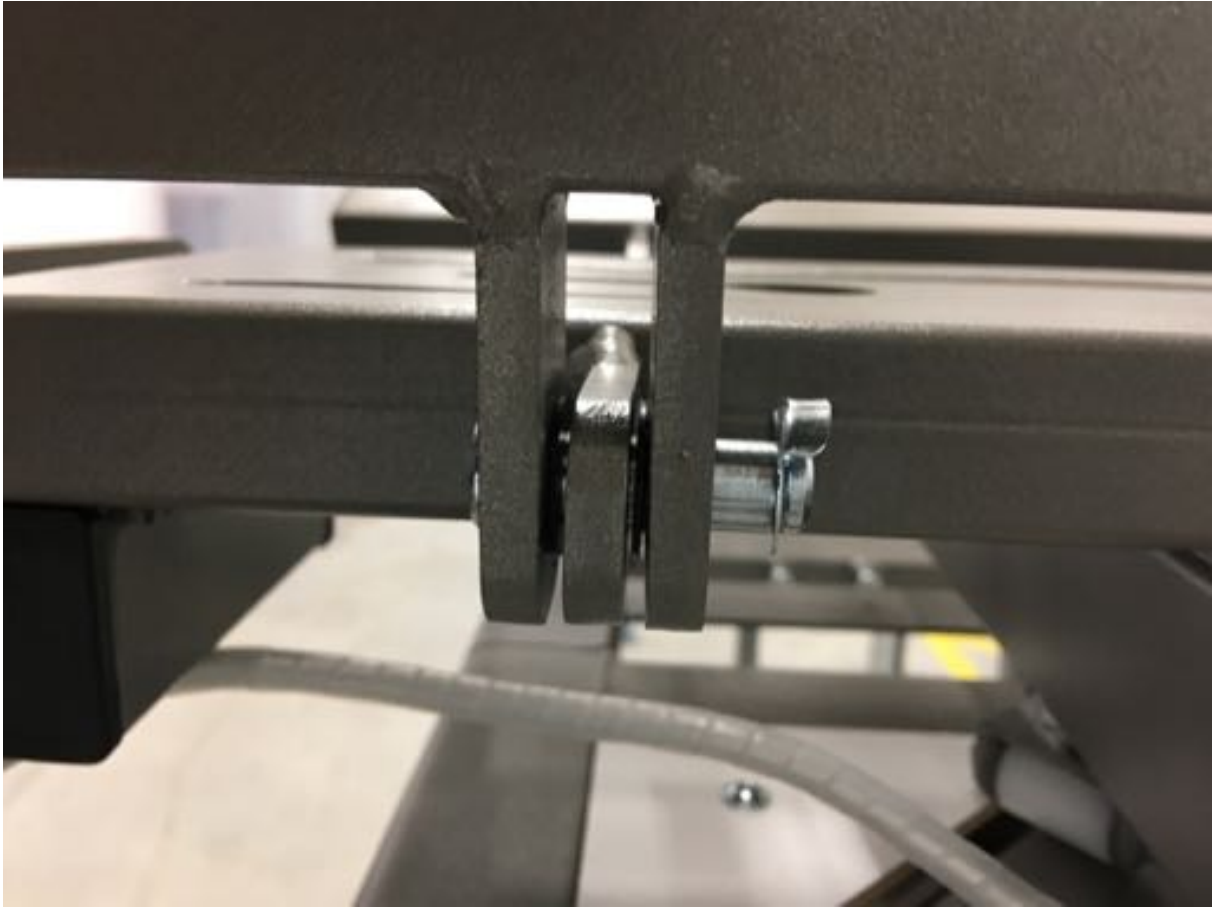
The necessary tools are located under the upper part of the bed frame in the cap at the middle end of the rotary axle.

Tools: Allen wrench 5, 6, 8

1. Remove the mattress from the anchors in the seating area, pull out the mattress between the lying surface and the lifting unit, pull towards the head end in the lower leg area, loosen the mattress on the anchors and remove it.



2. Remove the side rails from their holder on the head and foot unit.
3. Remove the hinge pins from the backrest, remove the backrest and replace the hinge pins.



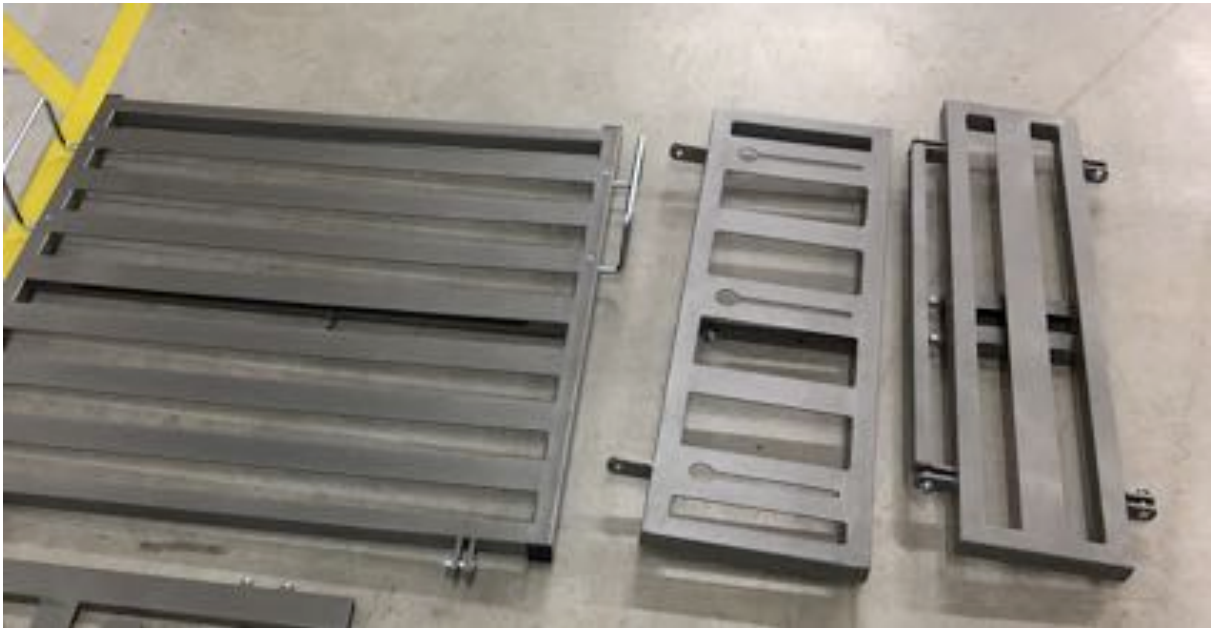
4. Remove the hinge pins of the lower leg section and the leg section motor coupling strut and. Then remove the lower leg section and replace the joint pins.



5. Remove the splint pin from the axle bolt on the swivel frame, unscrew the knurled nut and pull out the screw.



6. Remove the swivel frame from the axle tube.



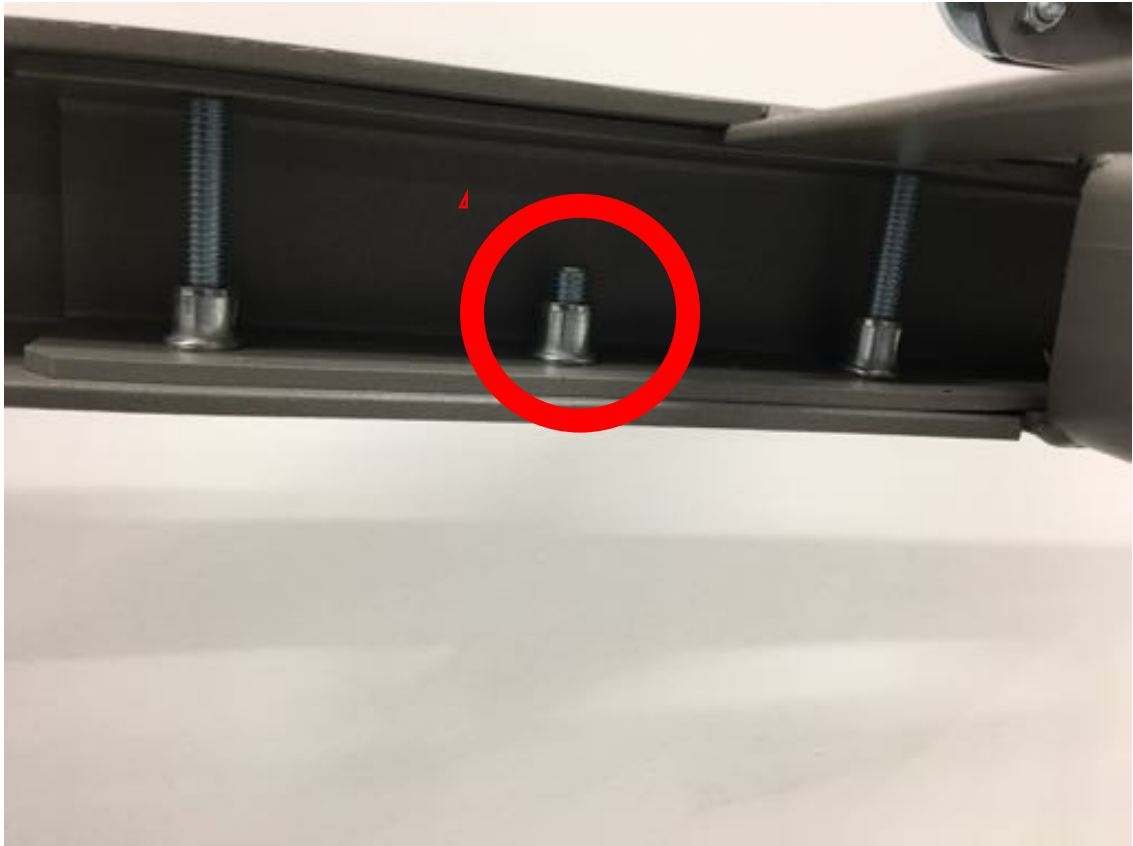
7. Remove the upper part of the bed frame from the transport trolley.
8. Remove the 6 adjustable feet from the lower part of the bed frame.
9. Screw 4 of the 6 adjustable feet into the upper part of the bed frame.



10. Screw in 2 adjustable feet into the lower part of the bed frame.
11. Unscrew the two locking screws M10 from the plug connector.



12. Place the upper part of the bed frame on the adjustable feet and slide the lower part of the bed frame with the plug connector into the upper part. Reinstall the **M10 locking screws**.



13. Lock the brakes of the lifting units

14. **Loosen the screws** of the transport device on the lifting units and remove the transport devices.



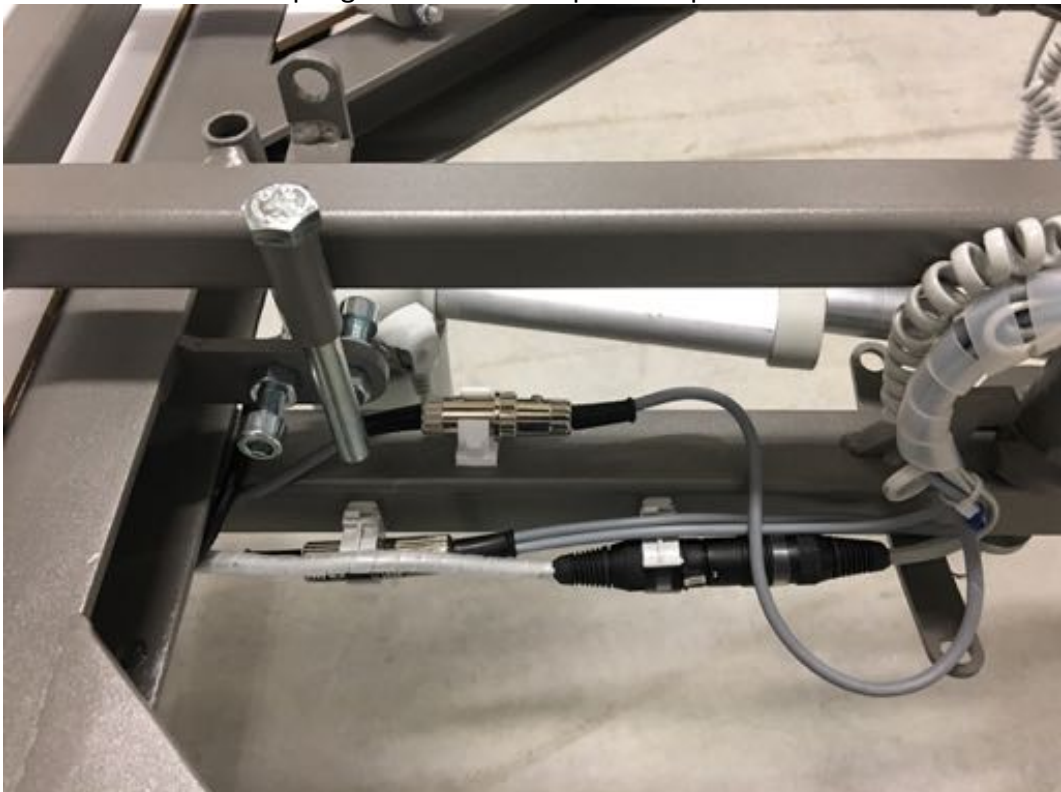
15. Attach the **lifting units** to the head and foot of the bed frame.



16. Place the **swivel frame** on the axis of rotation of the bed frame. Insert the axle screw through the rotary axis, tighten the knurled nut by hand and secure it with the splint.

17. Connect the cable connectors next to the rotary axis.

18. Connect the cable coupling at the middle separation point of the bed frame.



19. Connect the cable couplings of the two lifting units.

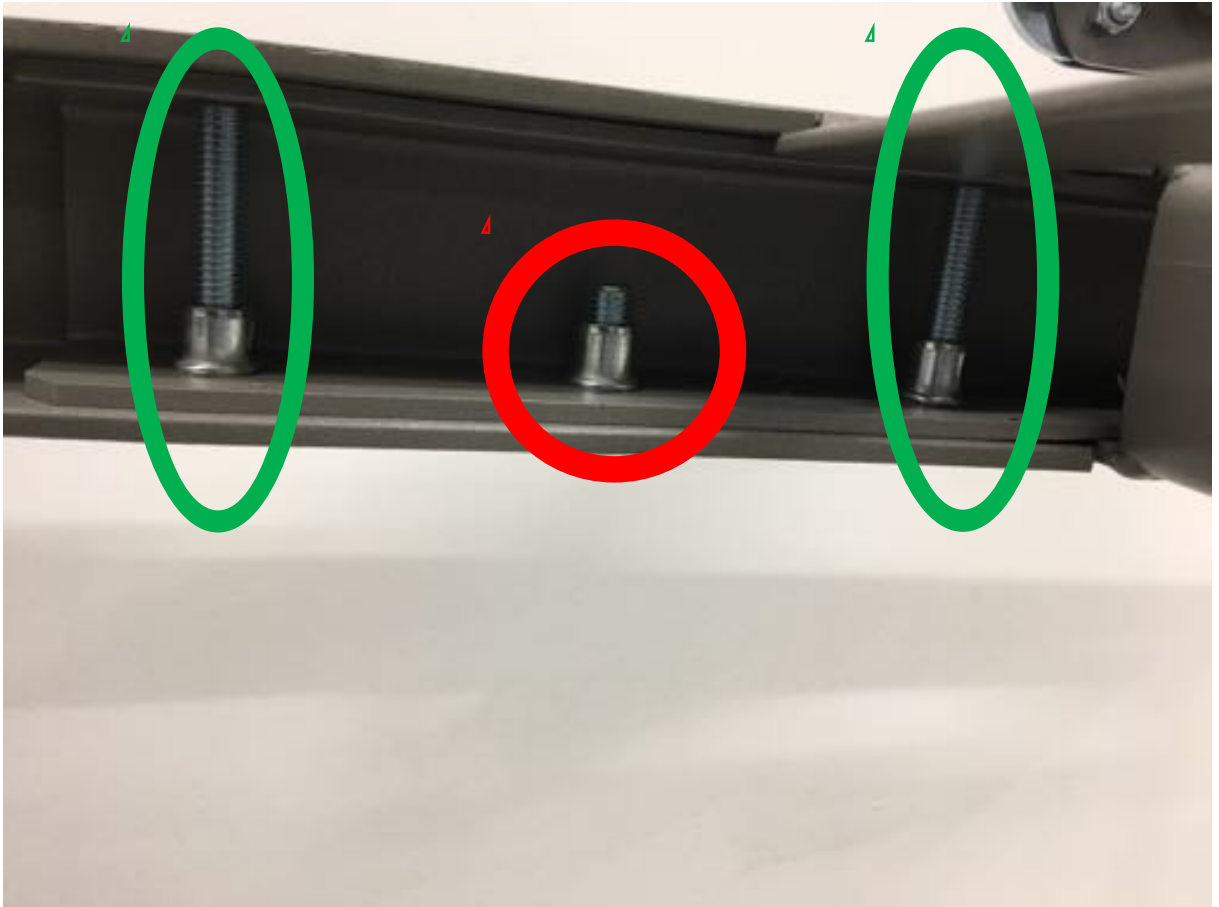


20. Connect the bed to the power supply.

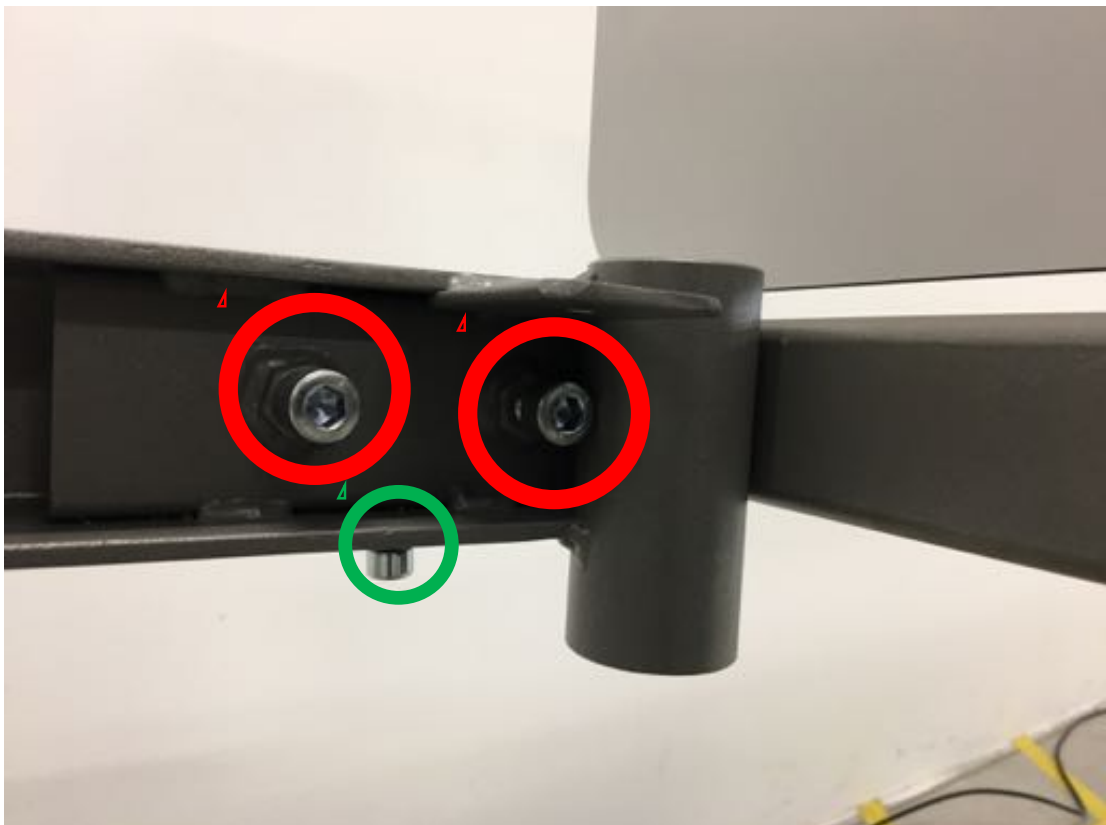
21. Move the bed to the highest position.



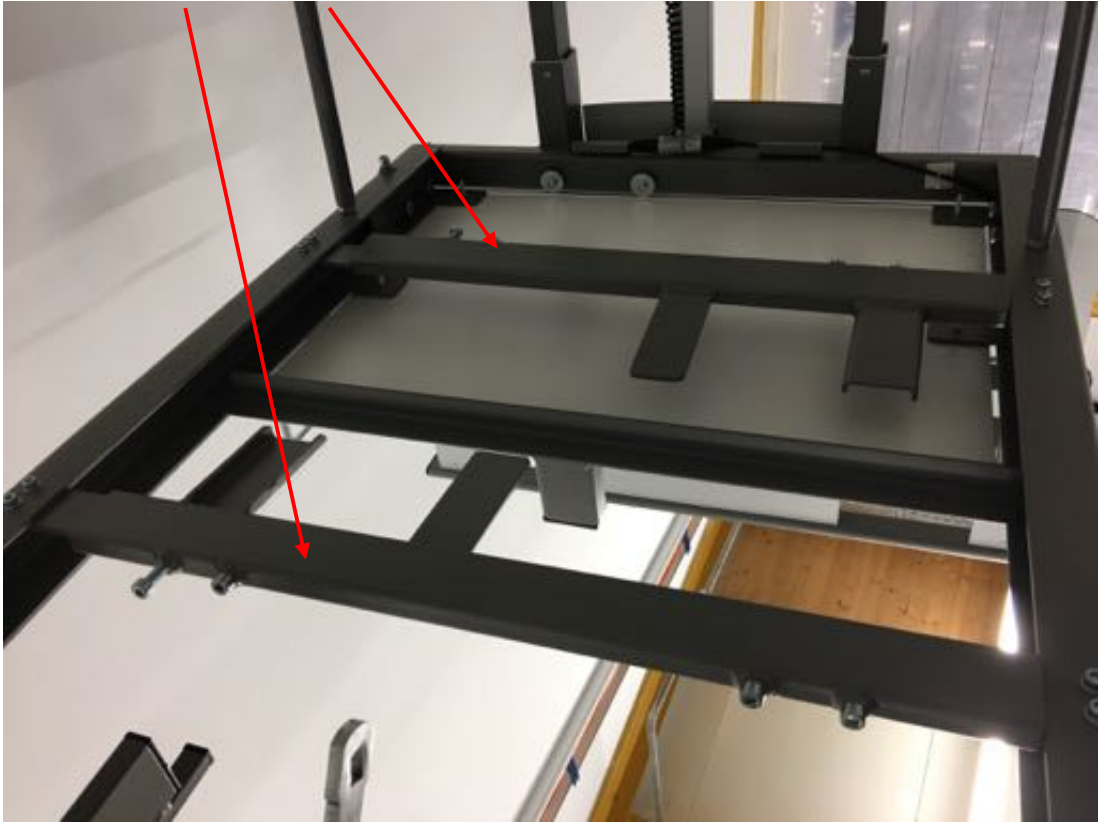
22. Check that the connectors are pushed together correct and safely
23. Tighten the M10 stud bolts at the centre separation point of the bed frame and tighten the two M10 locking screws. (tangibly)



24. Tighten the four screws M10 at the head and foot ends of the bed frame and the two M8 locking screws.



25. Unscrew the 6 adjustable feet from the bed frame and replace them in the provided holders.
26. Store the **transport devices** on the provided holder under the bed.



27. Remove the bolt of the rotation motor. Then remove the rotation motor clevis from the transport holder and attach it to the rotation lever on the rotation axis. Reinsert and secure the motor bolts.



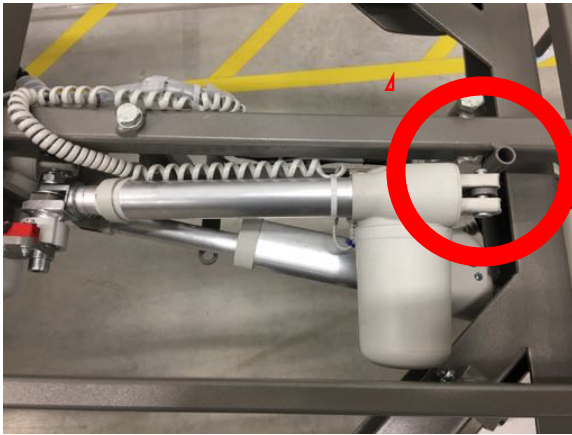
28. Insert the rotary stop pin on the opposite side to the rotary motor into the mounting sleeve. Press the rotation frame slightly against the rotating direction until the rotating stop pin falls completely into the sleeve.



29. Slide the back section onto the **joint flaps** and secure the **hinge bolts**. Make sure that the plastic bearings in the outer link plates are not lost.



30. Fold up the back section, **remove the motor bolts from the motor fork head from the transport bracket**, pull out the lifting tube as far as it will go, **insert it into the motor abutment on the back section**, replace the motor bolts and secure them. Fold down the back section again.



31. Place the upper leg section on the leg section motor, insert and secure the hinge pins.



**Bottom down!!!**

32. Insert the lower leg section into the upper leg section and insert and secure the hinge pins. Then insert the leg section motor coupling rod into the housing on the lower leg section, insert and secure the hinge bolts.





33. Perform a complete cycle of the bed. If everything is fine, install the mattress.
34. The mattress is first inserted into the holders on the lower leg section and pushed to the end. The rest of the mattress will be secured with the 2 anchors in the seating area.



The RotoFlex Basic is ready to use.

# Changing the rotation direction of the RotoFlex Basic

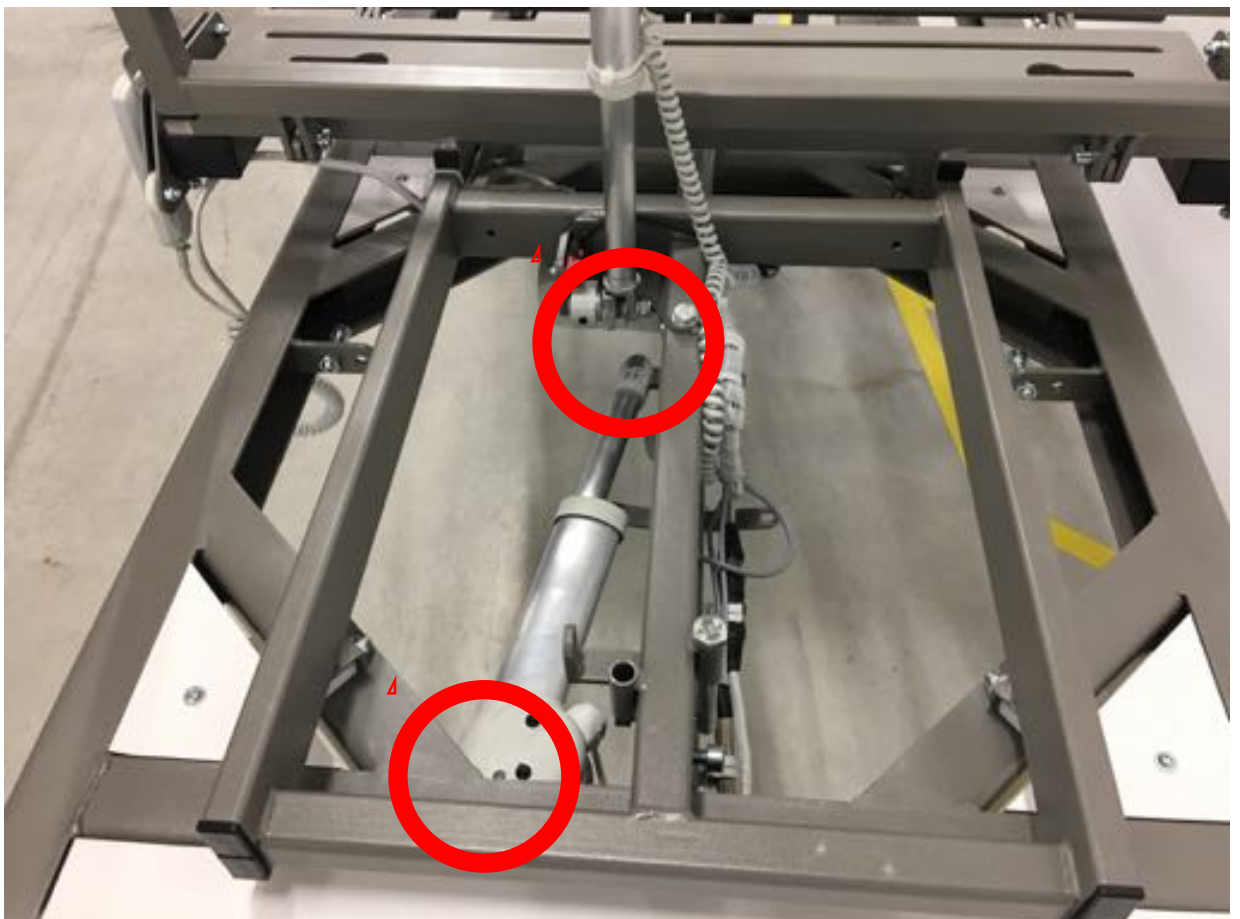
1. Move the bed to the highest position. Also move the backrest and leg section to the highest position.



2. Press the head end of the rotating frame slightly against the direction of rotation, pulling the stop pin out of its holder.



3. Remove the **two motor bolts** on the rotation motor. Then remove the rotation motor from its abutments and pass it to the other side under the central beam of the rotation frame.



4. Attach the motor to the mirror-symmetrically corresponding motor abutments, insert the motor bolts and secure them.
5. Insert the stop pin into the opposite holder and press the swivel frame slightly against the new direction of rotation. Thereby the stop pin falls completely in its holder.
6. Perform a complete cycle of the bed. If everything is fine, you can use the bed again.