

Bellman

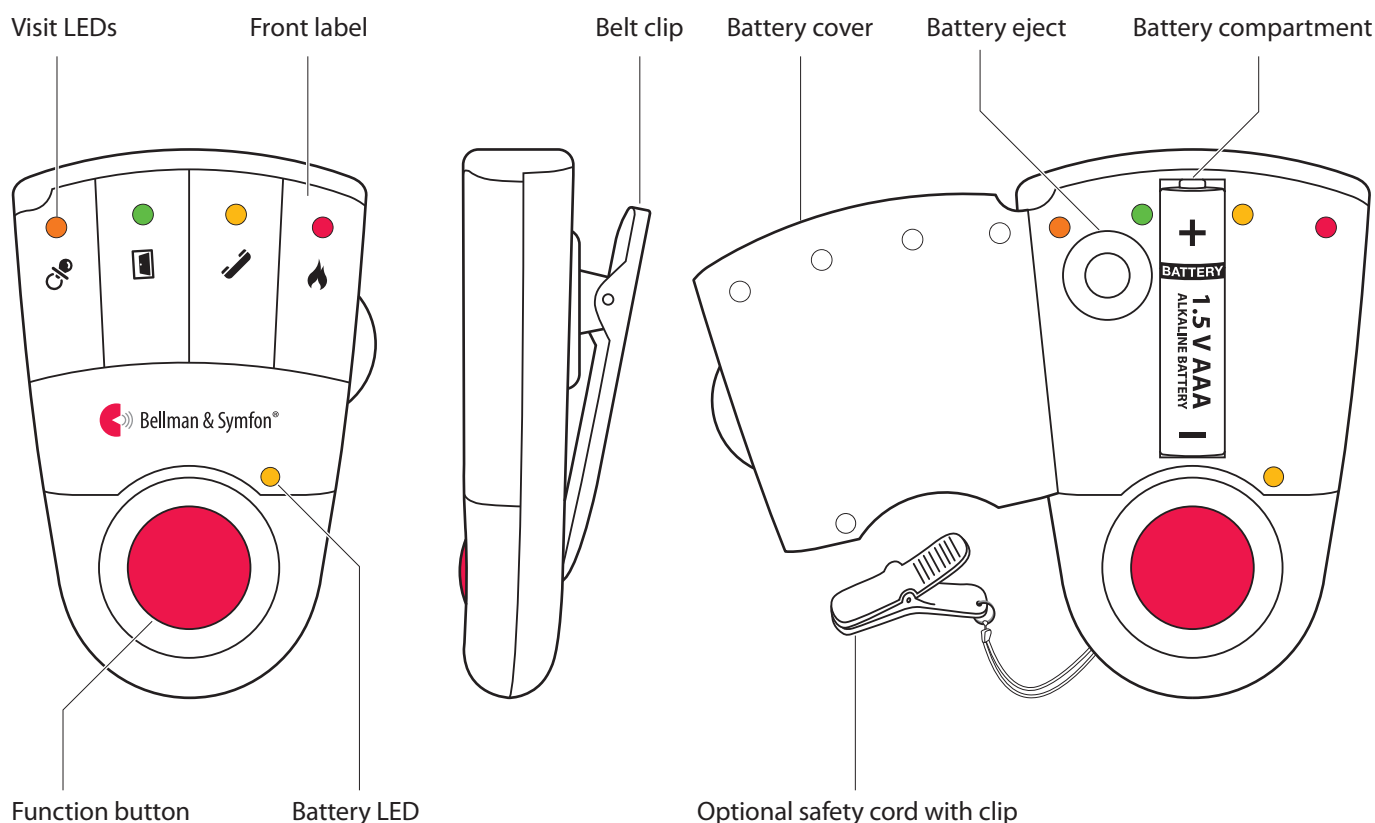
EN BRUGERVEJLEDNING  
Lommevibrator  
BE1470



BE1470

# Visit pager receiver

## Buttons and controls



## Technical specifications

### In the box

- BE1470 Visit pager receiver
- Safety cord with clip
- Extra front label

### Power and battery

- Mains power  
7.5 V DC 200 mA via the charger
- Battery power  
1.5 V AAA alkaline or  
1.2 V AAA NiMH rechargeable battery
- Operation time  
Alkaline battery: 2 – 3 weeks  
NiMH battery: ~1 week
- Power consumption  
Active: ≤200 mA, Idle position: ≤1 mA

### Dimensions and weight

- Height: 86 mm, 3.4"
- Width: 57 mm, 2.2"
- Depth: 29 mm, 1.1"
- Weight: 70 g, 2.5 oz. incl. battery

### Visit LEDs

The Visit LEDs normally indicates the following:

- Orange LED, pacifier symbol  
The baby monitor is activated
- Green LED, door symbol  
The door transmitter is activated
- Yellow LED, telephone symbol  
The phone transmitter is activated
- Red LED, fire symbol  
The smoke alarm is activated

### Environment

- For indoor use only  
Operating temperature  
15° to 35° C, 59° to 95° F
- Relative humidity  
5% to 95%, non-condensing

### Frequency and coverage

- Radio frequency  
314.91 MHz, 433.92 MHz or 868.30 MHz, depending on the region
- Coverage  
50 – 250 m, 55 – 273 yd. depending on the radio frequency and the characteristics of the building

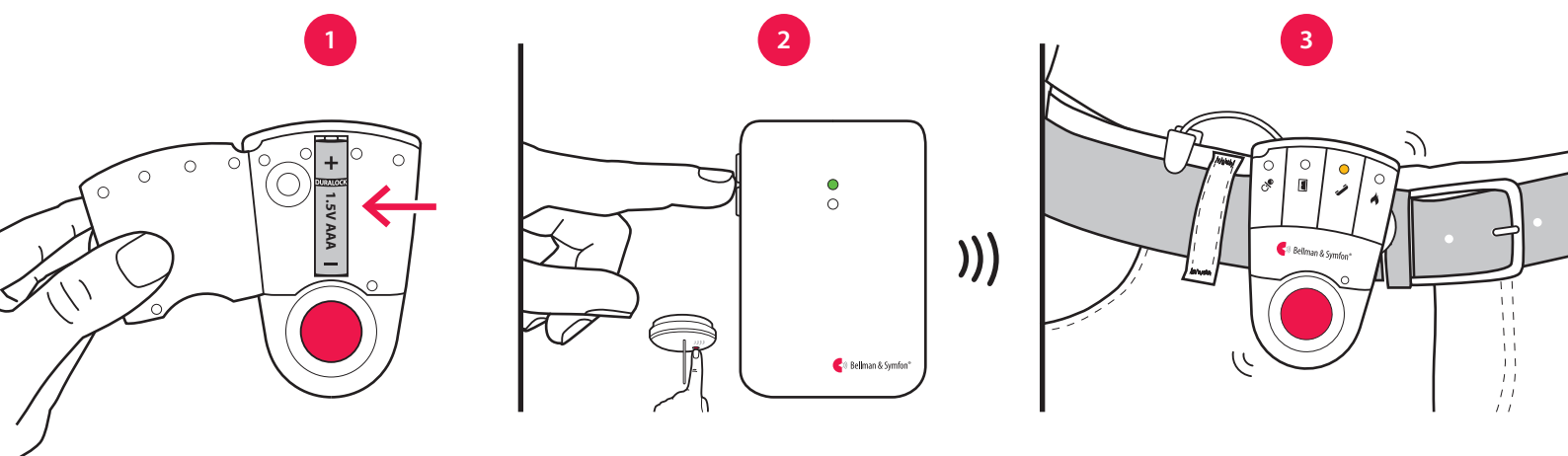
### Accessories

- BE1260 Pager charger
- BE1270 Bed shaker

# Visit pager receiver

## Getting started

- 1 Open the battery cover, fit the battery and close the cover again.  
Attach the pager to your belt using the belt clip. For extra security, use the supplied safety cord.
- 2 To test the radio link you need a Visit transmitter. Press the test button/s on the transmitter.
- 3 The pager starts to vibrate and lights up a Visit LED. If a bed shaker is connected during charging, it will vibrate. If nothing happens, see **Troubleshooting**.



## Default signal pattern

When a transmitter is activated, the pager lights up a LED and starts to vibrate with a certain pace. This is called signal pattern. The transmitters determine the pattern, and the default is as follows:

| Activated transmitter     | Pager LED | Pager / bed shaker vibration |
|---------------------------|-----------|------------------------------|
| ■ Door transmitter        | Green     | Slow ■ □ □ □                 |
| ■ Push button transmitter | Green     | Slow ■ □ □ □                 |
| ■ Telephone transmitter   | Yellow    | Medium ■ □ ■ □               |
| ■ Baby monitor            | Orange    | Fast ■ ■ ■ ■ ■ ■             |
| ■ Smoke alarm             | Red       | Long ■ ■ ■ ■ ■ ■ □           |

## Changing the signal pattern

The signal pattern can only be changed on the transmitters. See **Changing the signal pattern** for the relevant transmitter.

## Changing the front label

If you want to use Visit for other purposes, the pager front label can be replaced with a customized one. Here is how it's done:

- Open the battery cover, replace the original label with the supplied extra label and close the cover again.

## Replacing the battery

When the battery LED starts to blink in yellow, the battery is nearly depleted. Here is how you replace it:

- Open the battery cover and press the battery eject button to remove the old battery. Insert a 1.5 V AAA alkaline battery or a 1.2 V AAA NiMH rechargeable battery if you are using the BE1260 charger accessory.

# Visit pager receiver

## Changing the radio key

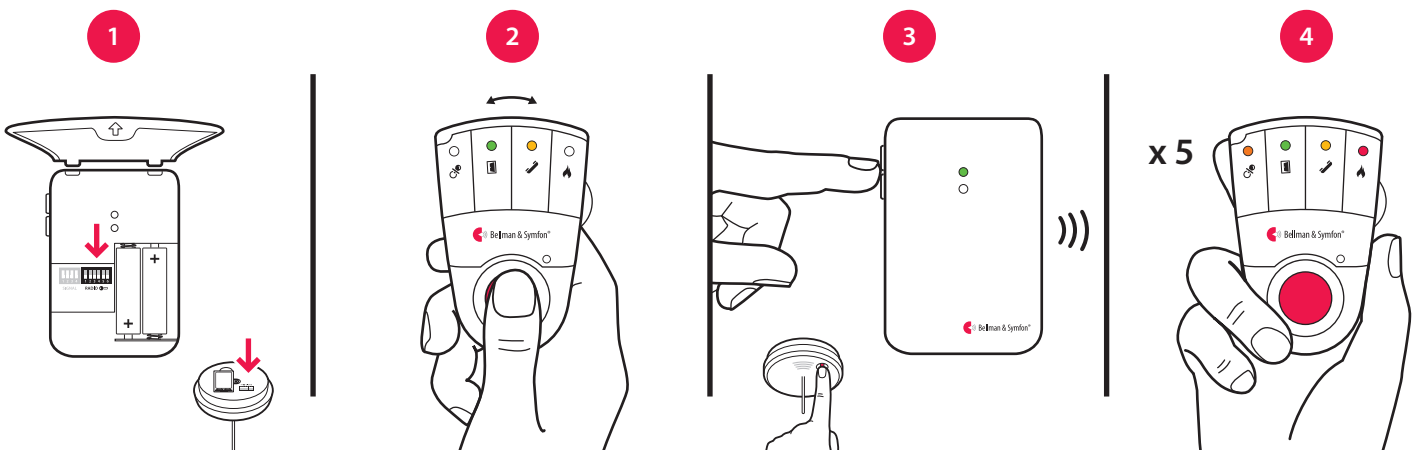
If your Visit system is activated for no reason, there is probably a nearby system that triggers yours. In order to avoid radio interference you need to change the radio key on all units. The radio key switches are located on the **transmitters**.

**Here is how you change the radio key:**

- 1 Open the transmitter cover and move any radio key switch to the up = on position to change the radio key. See **Changing the radio key** for the relevant transmitter.
- 2 Press and hold the function button on the pager until the green and yellow Visit LEDs blink alternately. Release the button.
- 3 Press the test button/s on the transmitter within 30 seconds to send the new radio key.
- 4 All Visit LEDs on the pager blink 5 times to show that the radio key has been changed. It then returns to normal mode.



**Please note:** All Visit units must be set to the same radio key in order to operate as a group.



## Pager accessories

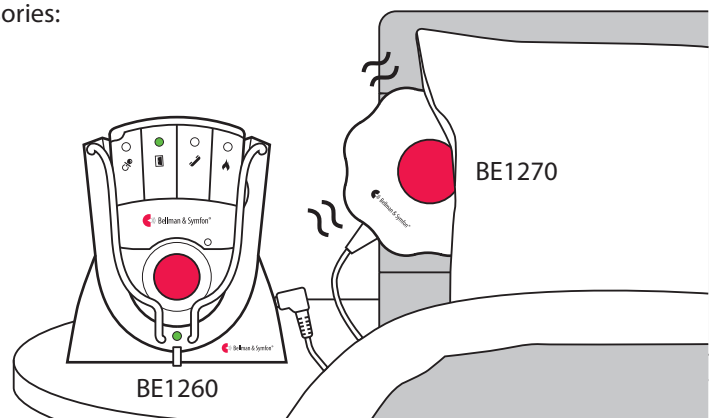
The pager can be complemented with the following accessories:

### ■ BE1260 Pager charger

Charges your pager during the night. Place it on the bedside table and connect up to two bed shakers. Please note that the pager will not vibrate when it's charging, but the Visit LEDs will act as usual.

### ■ BE1270 Bed shaker

Wakes you with vibrations if anything happens while you are asleep. Connect it to the pager charger and slide it under your pillow or mattress.



**Warning!** When using the pager charger **ONLY USE RECHARGEABLE NiMH BATTERIES** in the pager. Non-rechargeable batteries will start to leak if the pager is placed in the charger and the battery acid will damage the electronics. The resulting damage is not covered by warranty.

# Visit pager receiver

---

## Advanced programming

By using advanced programming, you can customize the signal pattern from a specific transmitter and event, displaying the LED colour and vibration pattern of your choice. The advanced programming overrides the radio key and pairs the units via the serial number. Please note that smoke alarms cannot be programmed for safety reasons.

**Note:** The transmitter must be activated as it is intended to be used in the system to generate the right signal. This means that you can't always use the transmitter test button (see **Default signal pattern** for the relevant transmitter).

### Here is how you program the pager:

- 1 Press and hold the function button on the pager. The green and yellow Visit LEDs will start to blink alternately. While still holding down the button, activate the desired transmitter as intended. The yellow battery LED on the pager will light up to indicate that you are in advanced programming mode. Release the button.
- 2 Scroll through the different **Visit LED options** by pressing the function button on the pager. Select the desired Visit LED pattern by holding down the function button until the battery LED goes out and lights up again.
- 3 Scroll through the different **vibration options** by pressing the function button on the pager. Select the desired vibration pattern by holding down the function button until the battery LED goes out and lights up again.
- 4 The pager will now show the new Visit LED colour and vibration pattern. Press the function button briefly to end the demonstration. After a short while, the pager will return to normal mode.



## Deleting the advanced programming

Follow the procedure below to delete the advanced programming.

- 1 Hold down the function button on the pager until the green and yellow Visit LEDs blink alternately. Release the button.
- 2 Press the function button on the pager 3 times in quick succession.
- 3 All Visit LEDs will light up for ~2 seconds to show that it has been deleted.

## Troubleshooting

Most problems with the pager can be solved quickly by following the advice below.

| If   | Try this   |
|--|--|
| The pager seems to be turned off                           | <ul style="list-style-type: none"><li>▪ The battery is depleted. Replace it with a 1.5V AAA alkaline battery.</li></ul>  <b>Important!</b> If you have a pager charger; only use a rechargeable 1.2 V AAA NiMh battery in the pager.    |
| The battery LED blinks in yellow                           | <ul style="list-style-type: none"><li>▪ The battery level is low. Replace it with a 1.5V AAA alkaline battery.</li></ul>  <b>Important!</b> If you have a pager charger; only use a rechargeable 1.2 V AAA NiMh battery in the pager.   |
| The pager does not respond when a transmitter is activated | <ul style="list-style-type: none"><li>▪ Check the batteries in the transmitters.</li><li>▪ Move the pager closer to the transmitter to make sure it's within radio range.</li><li>▪ Check that the pager is set to the same radio key as the other units in the Visit system, see <b>Changing the radio key</b>.</li></ul> |
| The pager is activated for no apparent reason              | <ul style="list-style-type: none"><li>▪ There is probably another Visit system installed nearby that triggers your system. Change the radio key on all units, see <b>Changing the radio key</b>.</li></ul>   |