



GIMA

PROFESSIONAL MEDICAL PRODUCTS

***DEAMBULATORE CON RUOTE
ROLLATOR WITH WHEELS
DÉAMBULATEUR À ROUES
ROLLATOR MED HJUL***

All serious accidents concerning the medical device supplied by us must be reported to the manufacturer and competent authority of the member state where your registered office is located.

INTRODUCTION

This manual provides the instructions for a correct use of our patient aid or an assistant / carer.

INTENDED USE

The rollator is designed to be used inside buildings by patients with an impairment to legs.

The devices are intended to provide a support to the body. This aid allow patient mobility making it easy to walk. They must be used with two arms in order to guarantee safe operation.

WARNING! The rollator is built for indoor use and only on flat surfaces. If it is necessary to employ the devices outside we advise to follow the road rules like any pedestrian.

MAINTENANCE

The rollator do not require special care for their ordinary maintenance. We advise to regularly perform the following checks:

- verify the reliability of different components
- check the correct fixing of screws and nuts
- test moving parts, apply lubricant if needed
- clean parts with mild detergents (do not use corrosive or harmful chemicals), put it in dry and ventilated environment.

WARNING!

Do not use the equipment in case it is damaged or any component is missing. Do not use the patient aids for purposes not mentioned in this user manual. Do not cross obstacles or use the patient aids on uneven surfaces, or wet and slippery. The use of the device is not recommended for people with poor functionality in the hands and arms.

Max load 100kg

ASSEMBLY

Kit supplied



fig. 1

fig. 2

Release the lateral supports from the wheels (fig.1) and slide the part of the structure with the rods until the device is in the position shown in fig. 2. For convenience, during assembly, place the walker on the ground, as shown in fig. 2.

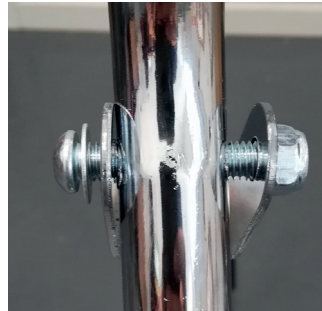


fig 3

Take the screw, the washer and the bolt and secure them as shown in fig. 3. It is recommended to tighten them well using the Allen wrenches supplied.



fig 4

Once both screws are in place, the walker can be turned as shown in fig. 4.

Adjust the height of the knobs by sliding the tubes.



fig. 5

Open the two locking screws, as shown in fig. 5.



fig. 6

Place the two locking screws in the stoppers as shown in fig. 6 and tighten them as much as possible. Always check the stability of the device before using it.

	Manufacturer		Keep in a cool, dry place
	Consult instructions for use		Keep away from sunlight
REF	Product code		Medical Device compliant with Regulation (EU) 2017/745
LOT	Lot number		Caution: read instructions (warnings) carefully
MD	Medical Device		

GIMA WARRANTY TERMS

The Gima 12-month standard B2B warranty applies.

REF 27721



Gima S.p.A.
Via Marconi, 1 - 20060 Gessate (MI) Italy
gima@gimaitaly.com - export@gimaitaly.com
www.gimaitaly.com
Made in China

