

## Pressure sensor mat and alarm

### Box Content

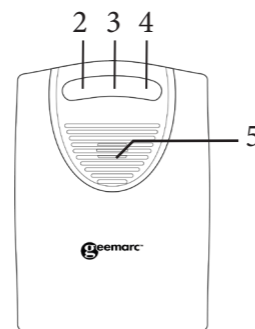
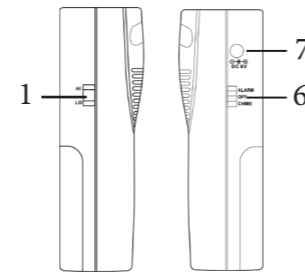
Inside your gift box you should find the below elements:

- 1 user guide
- 1 pressure sensor mat and its transmitter
- 1 wireless receiver
- Batteries are not included.
- A mains adapter is available as a spare part (6V DC/0.3A)..

### DESCRIPTION

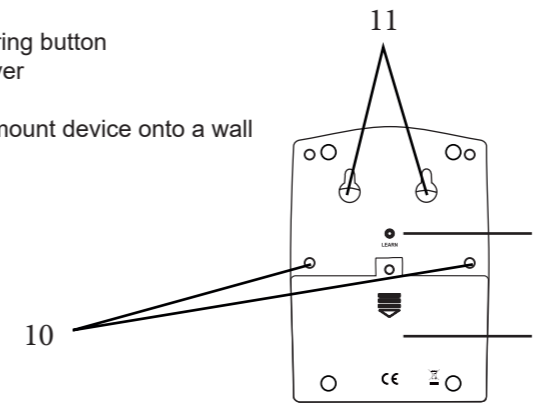
#### Wireless receiver

1. Volume control (HI/LO)
- 2,4. Visual indicators (Flash when triggered by transmitter)
3. Visual indicator (Flashes when triggered by transmitter/ Lights up when batteries are low)
5. Loudspeaker



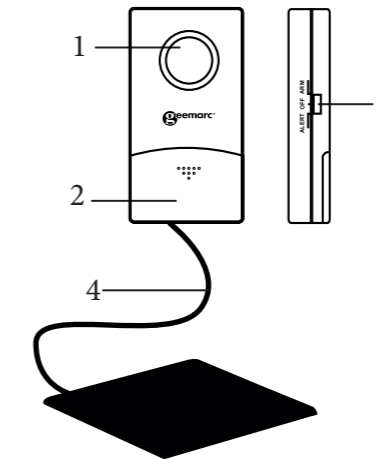
6. Power slide switch (Alarm/off/chime)
7. DC adaptor socket (6V DC/0.3A)

8. "Learn" pairing button
9. Battery cover
10. Screw
11. Holes to mount device onto a wall



#### Transmitter

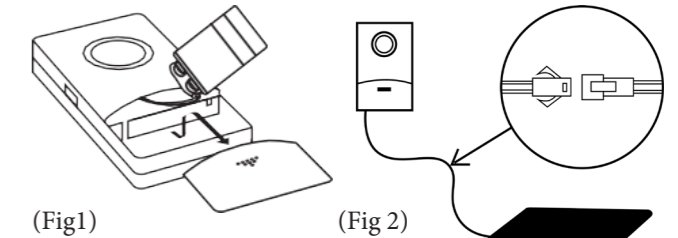
1. Loudspeaker
2. Battery cover
3. Power slide switch (Alert/off/arm)
4. Pressure sensor mat



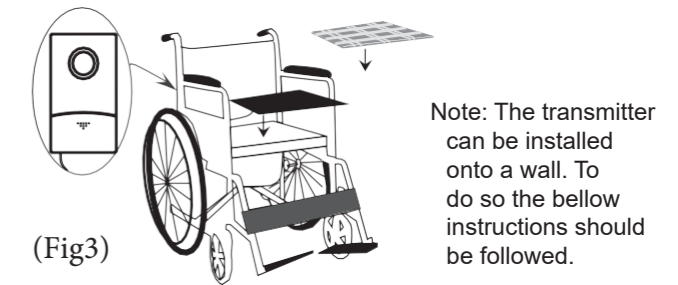
## INSTALLATION

### Setting up the transmitter and placing the pressure sensor mat.

1. Slide open the transmitter's battery compartment and place a 9V battery type PP3 (not included) while observing the correct polarity before replacing the battery cover. (Fig1)



2. Connect the transmitter's wire to that of the pressure sensor pad. (Fig2)
3. Place the pressure sensor mat under the cushion of the wheelchair of the person you are caring for. (Fig3)



Note: The transmitter can be installed onto a wall. To do so the below instructions should be followed.

Material :  
Plastic PVC

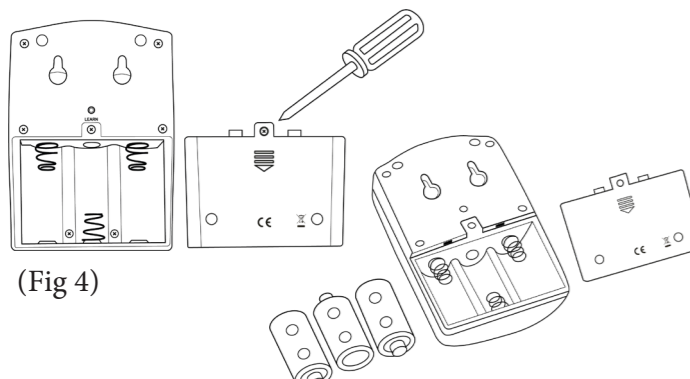


4. Drill two holes horizontally, 44 mm apart.
5. Insert two wall plugs fixing into the two holes.
6. Screw two screws into the plugs, hang the transmitter on the support and slide it down to lock it.

The middle LED (3) will start flashing to warn you that the battery needs to be replaced.

### Setting up the receiver

1. Unscrew the screw that is on the back of the wireless receiver and that holds the cover of the battery compartment in place before sliding open the battery compartment. (Fig4)
2. Place three 1.5V batteries ( type LR14 ) in the battery compartment while observing the correct polarity, and place the battery compartment back in place. (Fig5)
3. You can connect an AC adapter 6V DC 0.3A (not included); plug length: 12mm; inside positive ID: 2.1mm; outside negative OD: 5.5mm) to the alert, and install the batteries as backup in case of power failure.



(Fig 4)

(Fig 5)

Note: The receiver is wall mountable.

- A. Drill two holes horizontally, 36 mm apart.
- B. Insert two wall plugs fixing into the two holes.
- C. Screw two screws into the plugs, hang the receiver on the support and slide it down to lock it.

### FEATURES

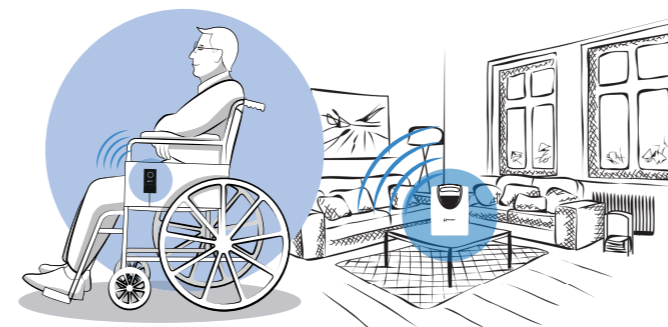
The Amplicall PSA200 consist of a battery powered pressure sensor mat connected to a signal transmitter, and a wireless signal receiver.

As soon as pressure stops being applied to the sensor mat, the transmitter it is connected to will send a signal to the wireless receiver which will immediately start ringing and flashing. The receiver's alarm volume can be set to high or low. The distance between the transmitter and the receiver should not exceed 30 meters in open field.

The pressure sensor mat, which is powered by a 9V battery (not included) was designed to be placed on the wheelchair or mattress of a person with reduced mobility. The alarm it needs to be paired with, which can work either with batteries (not included) or plugged into the mains (adaptor not included), alerts the caregiver whenever the person he or she cared for appears to no longer be sitting or lying on the pressure sensor mat.

Extremely easy to use our product is suitable for households that count a member with reduced mobility, nursing homes, hospitals and other places where patients or residents are being cared for.

Distance in between cannot exceed 30 meters.



### EVERYDAY USE

You need to sit on the pressure sensor mat before turning on the transmitter, otherwise the alarm will start ringing.

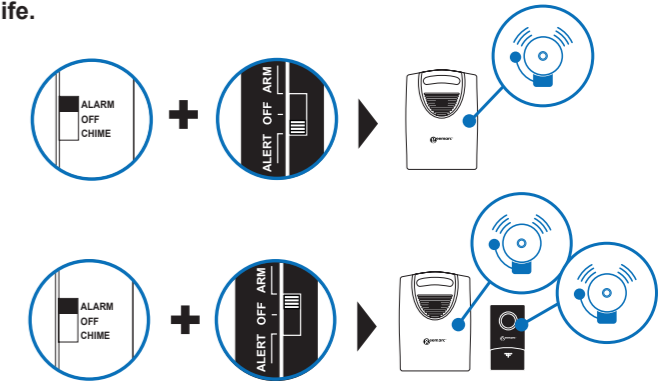
When sitting on the pressure sensor mat, move the power slide switch of the transmitter to the "ALERT" position. The transmitter will sound 4 seconds later to indicate it is now working. As soon as the transmitter detects that no pressure is being applied to the sensor mat, it will send a signal to the wireless receiver to trigger its alarm and flashing light. It will keep sending a signal every 40 seconds until pressure is once again applied on the sensor mat.

When the power slide switch of the receiver is placed on the "CHIME" position, the receiver will ring and flash for 5 seconds every 30 seconds each time it receives a signal from the transmitter alerting it that no pressure is being applied on the sensor mat. The receiver will keep ringing until it is turned off or pressure is once

again applied on the sensor mat.

When the power slide switch of the receiver is placed on the "ALARM" position, the receiver will ring and flash for 30 seconds every 10 seconds each time it receives a signal from the transmitter alerting it that no pressure is being applied on the sensor mat. The receiver will keep ringing until it is turned off or pressure is once again applied on the sensor mat.

**Note: when not used, the power switch of both the receiver and transmitter should be moved to the "OFF" position to prevent them from ringing and save battery life.**



### PAIRING

The pressure sensor mat and wireless receiver are delivered already paired. When setting them up for the first time, you should apply pressure on the sensor mat to make sure this triggers the alarm, which ought to be placed less than 30 meters away.

You can pair up to 10 wireless receivers to a single pressure sensor mat. To pair new receiver, you should follow the steps below :

1. Move the receiver's power slide switch to either the "ALARM" or "CHIME" position. You will hear a tone. It indicates that the receiver has been activated and is now in standby mode.
2. When in standby mode, you can use the tip of a pencil or a screwdriver to press and hold the "learn" button that is on the back of the wireless receiver for about 3 seconds.

As soon as you hear a short tone, you can release the "learn" button. The wireless receiver is now in learning mode and is ready to receive a pairing signal from your sensor mat's transmitter.

3. Move the power slide switch of your sensor mat's transmitter to either the "ALERT" or "ARM" position without applying pressure to the mat.
4. If you hear four consecutive short tones coming from the receiver, this means the pairing process has succeeded.

To unpair a wireless receiver, press and hold its "learn" button for 12 seconds until you hear two long tones. This indicates the receiver is no longer paired to any pressure sensor mat.

## TECHNICAL CHARACTERISTICS

**Range:** 30-meter  
**Frequency:** 433.92Mhz  
**Ringer volume:**  
- 75dB on the transmitter  
85dB (HI) or 70dB (LO) on the receiver  
**Power:**  
One 9V battery (type PP3) for the transmitter  
Three 1.5V batteries (type LR14) for the receiver  
Up to 10 receivers for each transmitter  
**Radio frequency power** < 250mW  
**Number of receivers for one transmitter: 10**

## TROUBLE SHOOTING

### 1) If the receiver does not ring, make sure that:

1. The power slide switch of the receiver is either on the "ALARM" or "CHIME" position
2. The power slide switch of the transmitter is either on the "ALERT" or "ARM" position
3. The transmitter and receptor are not more than 30 meters apart
4. There is no pressure applied to the sensor mat
5. The batteries don't need to be changed

### 2) If the receiver does not ring, make sure that:

1. The power slide switch of the transmitter is either on the "ALERT" or "ARM" position
2. There is no pressure applied to the sensor mat
3. The batteries don't need to be changed

## FCC CLASS B

**NOTE:** This equipment has been tested and found to comply with the limits for a Class B digital device, pursuant to Part 15 of FCC Rules.

These limits are designed to provide reasonable protection against harmful interference in a residential installation. This equipment generates, uses and can radiate radio frequency energy and, if not installed and used in accordance with the instructions, may cause harmful interference to radio communications.

However, there is no guarantee that interference will not occur in a particular installation. If this equipment does cause harmful interference to radio or television reception, which can be determined by turning the equipment off and on, the user is encouraged to try to correct the interference by one or more of the following measures:

- Re-orient or relocate the receiving antenna.
- Increase the separation between the equipment and receiver.
- Connect the equipment into an outlet on a circuit different from that to which the receiver is connected.
- Consult the dealer or an experienced radio TV technician for help.

**NOTICE:** This This class B digital apparatus complies with Canadian ICES-003. This product meets the applicable Industry Canada technical specifications.

This device complies with Part 15 of the FCC Rules. Operation is

subject to the following two conditions: (1) this device may not cause harmful interference, and (2) this device must accept any interference received, including interference that may cause undesired operation.

"This device complies with Industry Canada's license-exempt RSSs. Operation is subject to the following two conditions:

- (1) This device may not cause interference; and
- (2) This device must accept any interference, including interference that may cause undesired operation of the device."

## WARRANTY

From the moment your Geemarc AMPLICALL PSA 200 product is purchased, Geemarc guarantee it for the period of two years. During this time, all repairs or replacements (at our discretion) are free of charge. Should you experience a problem then contact our Helpline or visit our website at [www.geemarc.com](http://www.geemarc.com). The guarantee does not cover accidents, negligence or breakage to any parts. The product must not be tampered with or taken apart by anyone who is not an authorised Geemarc representative. The Geemarc guarantee in no way limits your legal rights.

**Important: YOUR RECEIPT IS PART OF YOUR GUARANTEE AND MUST BE RETAINED AND PRODUCED IN THE EVENT OF A WARRANTY CLAIM.**

**Please note: The guarantee applies to the United Kingdom only.**

## UKCA DECLARATION

Geemarc Telecom SA hereby declares that this AMPLICALL PSA 200 is in compliance with the essential requirements and other relevant provisions of the Radio Equipment Directive 2014/53/UE.

The declaration of conformity may be consulted at [www.geemarc.com](http://www.geemarc.com)

## DISPOSAL INFORMATION



**Disposal of old electrical & electronic equipment (applicable in the European Union and other European countries with separate collection systems)**

The symbol on the product or its packaging indicates that this product may not be treated as household waste. Instead it should be handed over to the applicable collection point for the recycling of electrical and electronic equipment. By ensuring this product is disposed of correctly, you will help prevent potential negative consequences for the environment and human health, which could otherwise be caused by inappropriate waste handling of this product. For more detailed information about recycling this product, please contact your local council office, your household waste disposal service or the shop where the product was purchased.



For product support and help visit our website at

[www.geemarc.com](http://www.geemarc.com)

E-mail : [help@geemarc.com](mailto:help@geemarc.com)

telephone **01707 387602**

lines are open 09h00 to 16h00 Mon to Fri

Parc de l'Etoile, 2 Rue Galilée, 59760 Grande-Synthe, France.

This product is made in China To Geemarc Telecom

