

BODY PROTECTION

Edition  
10/16



**SURCON** CARE LINE APS

Baunevej 7, Nim - DK - 8740 - Brædstrup  
Tlf. 86 55 70 45 - Fax 86 55 71 45  
www.surcon.dk - mail@surcon.dk

## Head protection series Starlight®



...just for life®  
**atc form** GmbH



# Starlight®

Here you can see the range of atoform products, Europe's largest manufacturer of head protection for persons with special needs. Each product clearly displays the dedication, necessary experience and the high craftsmanship displayed during production, to achieve the most comfortable fit.

Meticulous choice of materials is taken for granted and well thought out production methods our demand.

**The dialog with you is the foundation of sensible innovations.**

Are you looking for something out of the ordinary?

Improvements and individual solutions are targeted and reached. We are grateful for your suggestions and wishes.

**Our combined effort helps to help!**

Ihr ATO FORM Team



Article number and  
prices see  
pricelist/order form

## Starlight® Secure Evo



### Elegance – with security!

The Starlight Secure Evo is based on the experiences and knowledge of the Starlight Secure Leather.

This model is distinguished by its improved materials for an even higher wearing comfort. High quality workmanship and elaborate workmanship, with much loving attention to detail are visible here. The upper leather is high-quality, toxin-free coloured full grain leather.

The closed upper side offers additional protection for those at risk of falling. Optional the head protection can be individually colour designed or can be offered with mixed materials.

With use of the Velcro sunshield the head protection becomes the “sporty” variant.

### Accessories:

- Chin protection
- Forehead protection
- Neck protection
- Velcro fastener
- Fix lock fastener
- Strengthened thorn buckle



*Starlight® Secure Evo  
with forehead and  
neck protection  
in various colour  
(option)*



*Starlight® Secure Evo  
with Velcro sunshield  
and integrated denim  
(option)*



### Technical details: Starlight® Secure Evo

Size	1	2	3	4	5
Head circumference	47 – 49 cm	50 – 52 cm	53 – 55 cm	56 – 59 cm	60 – 62 cm
Padding	soft/firm foam combination				
Weight	approx. 240 g	approx. 260 g	approx. 270 g	approx. 290 g	approx. 310 g



## Starlight® Secure Leather



Starlight® Secure Leather  
with chin protection, forehead protection  
and neck protection (Accessories)

### Elegance – with security!

The entire design is identical to the Starlight Secure head protection and is fitted with high-quality full grain cowhide.

The leather is vegetable tanned, free of chrome tanning agents and toxic substances, according to the PCP – prohibition laws.

The colouring is obtained by natural materials and processes, without use of AZO colours.

The inner lining consists of roughened calf leather. It is breathable, heat and moisture regulating, very kind to the skin, mineral nappa soft tanning in a barrel using high quality dyes.

### Accessories:

- Chin protection
- Forehead protection
- Neck protection
- Fix lock fastener
- Strengthened thorn buckle



Further colour requirements?  
Certainly!



### Technical details: Starlight® Secure Leather

Size	1	2	3	4	5
Head circumference	47 – 49 cm	50 – 52 cm	53 – 55 cm	56 – 59 cm	60 – 62 cm
Padding	soft/firm foam combination				
Weight	approx. 150 g	approx. 180 g	approx. 180 g	approx. 200 g	approx. 240 g

## Starlight® Easy



Especially light weight protector for a high definition fit. It adjusts any head shape, due to the special high-tech foam. And thus protects the cranium through well thought out anatomical adjustability.

The workmanship meets highest quality requirements. The protector is offered two toned, with free choice of colour.

Simple and brilliant adjustment system for the ear straps. Thought out excellence of quality.

### Accessories:

- Chin protection
- Contrasting seams
- Padded chin strap



Elegant proportions and safe    Ear line adjustable

### Technical details:

Technical details:	Starlight® Easy
Forehead protection thickness	1,5 cm
Head circumference	according to size
Padding	hard foam
Outer material	leather
Lining	leather
Weight depends on size	approx. 120 – 260 g



When ordering please use the ATO FORM sheet for needs assessment "Body protection"!

You will find it in our price list or on our website [www.ato-form.com](http://www.ato-form.com).



# Head protection



## Starlight® Varia



Growth-related or after surgery, it is possible that the shape of the head and therefore certain measurements (such as the head circumference) change in a short period of time.

Through its ingeniously construction the head protection Starlight Varia is individually adjustable in head circumference and straps making it ideal to adapt to the individual measures of the person in need of care.

The protective effect in the occipital area is achieved by the individual padding chambers made out of shock absorbing high-tech foam.

Through the adjustable possibilities, the head protection is strengthened in the occipital area. By this, any impact forces when falling backwards are spread to the entire construction of the occipital area.

The Starlight® Varia is made out of high quality toxin-free coloured full-grain leather.

### Fasteners:

- Velcro fastener
- Fix lock fastener



The best head protection is the one which is gladly worn. Combined colours, special fabrics and sizes are available on request, for a small additional surcharge.

Further colour requirements?  
Certainly!



### Technical details: Starlight® Varia

Size	S	M	L	XL
Forehead protection thickness	approx. 10 mm			
Head circumference	48–51 cm	52–55 cm	56–59 cm	60–63 cm
Padding	High-tech foam			
Outer material	leather			
Lining	leather			
Weight	approx. 310 g	approx. 330 g	approx. 350 g	approx. 370 g

## Starlight® Flex



**You expect precision? Okay!  
We are flexible...**

Due to illness or growth-related, after surgery – for various reasons – the shape of the head can change.

Owing to its ingeniously construction, the head protection Starlight® Flex is individually adjustable in many areas, making it ideal to adapt to the individual measures of the user.

Your customer deserves a risk-free Starlight® Flex without metal parts or similar hazards.

**Accessories:**

- Chin protection
- Forehead protection
- Velcro sunshield
- Closed top
- Ear protection



*Starlight® Flex  
basic model*



*Black      Blue      Brown      Green      Red*



*Closed top, forehead-,  
chin- and ear protection*



*Alternative upper side and  
velcro sunshield*

**Technical details: Starlight® Flex**

Size	S	M	L	XL
Forehead protection thickness (without Accessories)	approx. 23 mm			
Head circumference	48 – 52 cm	52 – 56 cm	56 – 60 cm	60 – 63 cm
Padding	High-tech foam			
Outer material	leather			
Lining	spacer fabrics			
Weight	approx. 340 g	approx. 360 g	approx. 380 g	approx. 400 g



## Starlight® Protect

### Greatly improved further advancement of the model „Orient“

The construction of the models Protect and Protect Plus is based on the sandwich principle, in order to absorb and spread any occurring hit and pushforces.

A hard foam shell is worked in to the protector on the outside of the occipital area. This is hit and splinter resistant, to absorb and spread any occurring forces in case of a backward impact.

The Protect, as well as Protect Plus, are made of high quality full-grainleather, and are fastened securely and firmly, by chin and neck straps. The fastening can be chosen, depending on the indication.

The protective effect in the cranium area is accomplished by longitudinal braces (open version), or through the closed perforated cap, made of shockabsorbing high-tech foam.

Does your idea of a head protection look different? You are welcome to send us your idea on the measurement sheet, drawn to scale. Or in a personal interchange.

### Accessories for Starlight® Protect and Protect Plus:

- Chin, ear, cheek protection
- Closed top
- Fix lock, Velcro® fastener
- Magnet lock including key
- Strengthened thorn buckle
- Visor or Xtra face protection (only for Protect Plus)



Technical details:	Starlight® Protect
Forehead protection thickness	1,5 cm
Circumference	according to size
Padding	hard foam
Outer material	leather
Lining	leather
Weight	approx. 260 g



Colour variants

We offer many extras as a standard, for example the following colours:



Black

Blue

Brown

Green

Red



## Starlight® Protect Plus



### An asset for safety and Quality!

The versions Protect and Protect Plus differ mainly in the size of the forehead protection: Protect 1,5 cm, Protect Plus 4 cm.

Choose between different shades of leather – Our high standards of quality apply also to coloured leather.

The calf leather used for the lining is perforated to make it permeable. This enables the exchange of moisture and heat, and thus makes it very friendly to the skin.



You will find our ATO FORM „Assessment of demand“ sheet in our price list and on our homepage [www.ato-form.com](http://www.ato-form.com) as well.



*Xtra face protection*

### Technical details:

Technical details:	Starlight® Protect Plus
Forehead protection thickness	4 cm
Circumference	according to size
Padding	hard foam
Outer material	leather
Lining	leather
Weight	approx. 280 g



*Chin protection*



*Ear and cheek protection*



*Closed top*



*Visor (only for Protect Plus)*

# Quality in detail – the varie



ty as required • individuality to taste

ty of **ato** ...lust for life® **form** gmbh



We want you to be in the best of hands. So we use: ■ Very soft yarn for highest wearing comfort ■ Solvent free glue ■ toxproof tanned full-grain leather ■ slightly perforated and roughened leather lining for an excellent microclimate ■ special highest quality foam ■ nickel free fasteners

Development, manufacturing and quality control carried out at our company headquarters in Germany.

Our in-house production gives us the possibility of **express production** - when the best protection is required urgently.



## Starlight® Protect Plus

### with „Xtra“ face protection

#### Is even more security possible?

The Starlight® Protect Plus with Xtra face protection was specially developed for patients with a great need for face protection.

The "Xtra" offers even more safety at increased risk of injury from frontal crashes or auto aggressive behaviour.

Particularly important is the use of non-perforated calf leather, as it provides additional breathability, warmth and moisture regulation in combination with skin friendliness.



**Can't find the solution you're looking for here?**

**We invite you to visit our website where you will find more information about our extensive range of special designs.**

**We will also gladly assist you by phone:**

**Please phone 0049 6093 944-0**

## Starlight® Go Sport & Go Sport Plus

### Best protection, elegantly implemented!

The construction of both models Go Sport and Go Sport Plus are based on the sandwich principle, for absorption and distribution of all shocks and impacts.

A hard foam shell is worked into the protector on the outside of the occipital area. This is hit and splinter resistant, to absorb and spread any occurring forces in case of a backward impact.

The Go Sport, as well as Go Sport Plus are made of high quality full-grain leather and sit firmly and secure on the head. Various fasteners and much more selectable, depending upon indication.

Choose between various shades of leather – Our high standards of quality apply also to coloured leather!

The calf leather used for the lining is perforated, which is breathable, moisture and heat regulating as well as being very skin friendly.

You will find our ATO FORM „Assessment of demand“ sheet in our price list and on our homepage [www.ato-form.com](http://www.ato-form.com) as well.

#### Accessories:

- Closed top
- Fix lock
- Velcro fastener
- Magnet lock incl. key
- Strengthened thorn buckle



Black

Blue

Brown

Green

Red

Technical details: Starlight®	Go Sport / Go Sport Plus
Forehead protection thickness	1,5 cm / 4,5 cm
Head circumference	according to size
Padding	hard foam
Outer material	leather
Lining	leather
Weight	approx. 250 g / 300 g



## Starlight® Standard



This light weight head protection (about 100 g) has good deceleration properties.

The cotton jersey lining ensures good moisture circulation. It has a robust cover.

The adjustable chin strap offers excellent hold.

Starlight Standard is available in blue, red and brown. Each protector is manufactured individually and inch perfect.

For head circumference 45 to 62 cm available at standard price.

Washable at 40 Degrees.

### Accessories:

- Chin protection
- Fix lock fastener
- Velcro fastener



Technical details:	Starlight® Standard
Padding thickness	1,5 cm
Circumference	according to size
Padding	hard foam
Weight	approx. 100 g



Starlight Standard „Sport“ and Starlight Standard „Sport“ with closed top



Starlight Standard colour red, brown and blue



## Starlight® Base

### ATO FORM offers the most secure basis.

This head protection model is carefully made of high quality hardwearing cotton.

In addition to the lateral protection and the excellent fit, it offers excellent air circulation. Optionally, it can be supplemented with forehead and/or neck cushions, depending on the indications.

The relative protection in the cranium area is given through a crosscushion, made from shock absorbing foam material, that can be attached variably through Velcro fastener.

Adjustable chin strap and fasteners, which can be chosen according to indication, enable an excellent individual fit.

### Accessories:

- Chin Protection
- Neck Protection
- Forehead Protection
- Fix lock fastener



*Starlight® Base with chin guard, forehead protection and neck protection (Accessories)*



The best head protection is the one gladly worn. Colour combinations / special material / special sizes are available for all models on request, subject to a minimal surcharge.



*Colour variants for Starlight® Base*

### Technical details: Starlight® Base

Size	1	2	3	4	5
Circumference	47 – 49 cm	50 – 52 cm	53 – 55 cm	56 – 59 cm	60 – 62 cm
Padding	soft/firm foam combination				
Weight	approx. 100 g	approx. 110 g	approx. 120 g	approx. 130 g	approx. 140 g



## Starlight® Generation



### Impressively lightweight protection

The Starlight® Generation models are padded with high-efficiency polyurethane foam. The reduced volume that characterises this head protection is made possible by the materials used. The protective effect is fully preserved.

Thus the Starlight® Generation models look more like "normal headwear" (e.g. cap, hat) and avoid the often stigmatising appearance of head protection.

The selected materials and cut guarantee optimal fit for lightweight protection.

The Starlight® Generation models can be optionally fitted with a fixed or removable chinstrap.

### Accessories:

- Fixed or removable chinstrap, transparent dependant on model



Anthrazit

Camel

Black

Red

### Technical details:

Model	Felt cap
Padding thickness	approx. 10 mm
Head circumference	according to size
Padding	Hightech-foam
Outer material	Felt
Lining	Cotton blend
Weight	ca. 160 g





It is possible to jazz up the Starlight® Generation models with various accessories such as flowers or embroidery.

We are happy to advise you by telephone on 0049 6093 944-0 or through one of our rehab consultants.



Starlight® Generation – Colour contrasted seam stitching in denim look.



Starlight® Generation – Width adjustment



Jeans black    Jeans blue    Camouflage



Starlight® Baseball Cap – in special colour red with chinstrap or in denim look

## Technical details:

Model	Basecap
Padding thickness	approx. 10 mm
Head circumference	according to size
Padding	Hightech-foam
Outer material	Jeans
Lining	Cotton blend
Weight	ca. 160 g

# Head protection



## Starlight® Secure



*Starlight® Secure with chin protection, forehead protection and neck protection (accessories)*

The anatomical form of the “protector” with integrated protection of the temple and ear area, using high quality foam, ensures the excellent protection of the head. Hit and shock forces are absorbed through define pressure deformation.

The protection of the upper head area is accomplished through individually adjustable trapeze cushions, made of shock absorbing foam.

The head protection can be supplemented by forehead and/or neck cushions, which are fitted with Velcro strips. This ensures extraordinary protection. Individual and fitting is accomplished through adjustable chin straps as well as fasteners that can be individually chosen. Secure is covered by high quality cotton.

### Accessories:

- Chin protection
- Forehead protection
- Neck protection
- Fix lock fastener



*Colour variants*



**Require further accessories?**

**Certainly!**

### Technical details: Starlight® Secure

Size	1	2	3	4	5
Head circumference	47–49 cm	50–52 cm	53–55 cm	56–59 cm	60–62 cm
Padding	soft/firm foam combination				
Weight	approx. 100 g	approx. 100 g	approx. 110 g	approx. 120 g	approx. 130 g

## Interesting aspects about the head protection program

### You need a head protection for your child or another member of your family?

- The well thought out head protection line Starlight from ATO FORM can be acquired in your health product shop or orthopaedic shop. All models offer defined protection and high comfort levels.
- Model and material can be chosen according to indication. The different models are made of different special foams, chosen for specific requirements. You can also choose between different fasteners and colours for the head protection.
- In your health product - or orthopaedic shop, detailed specifications will be registered, using the ATO FORM sheet for needs assessment and indication. This is to ensure the excellent fit of the protector, to ensure its fulfilling its purpose to the full. This ensures, that the needs of the patient are not neglected, but are in first place.

**Design that does not exclude but secures...**



**STARLIGHT® - Dimension sheet**  
**Headprotection**  
 The head dimensions are determined by using a flexible measuring tape according to the drawings below.

**ato form**  
 specialist retailer:  
 Contact person:  
 Patient:  
 clinical picture:

**1**  
 A..... cm (Head circumference: eyebrow height - above the occipital bun)  
 B..... cm (Middle of eyebrows height to occipital bun)  
 C..... cm (Over the head from ear to ear)  
 D..... cm

**2**  
 Must be filled if Starlight® Protect, Starlight® Protect Plus, Starlight® Go-Sport, Starlight® Go-Sport Plus, Starlight® Fix or Starlight® Verta is required  
 E..... cm  
 F..... cm

**3**  
 Must be filled if Starlight® Protect, Starlight® Protect Plus, Starlight® Go-Sport, Starlight® Go-Sport Plus, Starlight® Fix or Starlight® Verta is required  
 G..... cm  
 H..... cm

**Cranium prospects** FIG. 4

If needed, please correct in the upper drawings the front form and/or the shape of the cranium or rather enter any other anomalies.

**Comments**

© ato form 2016

We would like to point out, that we reserve the right to make alterations if required due to technical reasons. Possible alterations made apply also to colour and fabrics. The products displayed are either the basic models or a variation thereof (e. g. with accessories). Please, take this into consideration when ordering. We do not accept liability for printing errors. Date: October 2016



## Starlight® Aqua



Until now it was not possible to wear the head protection when bathing/showering, or for therapeutic purposes or water based leisure activities. Practice shows however, that also in these areas protection of the head is very important. Therefore the head protection Starlight® Aqua was solely designed for this area.

The padding of the Aqua consists of a special integral foam, which is soft and elastic and therefore shock absorbent. Thanks to the careful selection of materials a high wearing comfort is achieved. The many positive properties of the neoprene used (high dynamic load capacity, weather and ozone resistance, high elasticity and impact resilience as well as resilience against fungi and bacteria, quick-drying, waterproof, easy to clean and disinfect etc.) makes this head protection a valuable aid.

Through the anatomical shape the entire head is protected. The adjustability of the chin strap and upper head ensures that the head protection is neither too tense nor too loose.

The cleaning of the head protection is also no problem by hand washing up to 30°.



Individuell verstellbare  
Trapezpolster



Chin protection (accessory)

### Accessory:

- Chin Protection

### Fasteners:

- Velcro® fastener
- Fix lock fastener

### Technical details: Starlight® Aqua

Size	1	2	3	4	5
Head circumference	47–49 cm	50–52 cm	53–55 cm	56–59 cm	60–62 cm
Padding	extreme soft integral-foam				
Outer material	neoprene, breathable and non-toxic				
Weight	approx. 130 g	approx. 150 g	approx. 170 g	approx. 190 g	approx. 210 g

## Starlight® Snooze

An exceptional light protector with good deceleration qualities and a highly defined fit. Extra soft, breathable leather and soft yarns are used for processing.

The comfortable soft padding made out of a combination of various foam types, will guaranteed prevent unpleasant pressure whilst sleeping.

<b>Technical details:</b>	Starlight® Snooze
Padding thickness	4 cm
Circumference	according to size
Padding	hard foam + marshmallow foam + cotton wool
Outer material	leather
Lining	leather
Weight	approx. 270 g



### Accessories:

- Chin protection
- Strengthened thorn buckle



## Starlight® Active

The use of modern communication methods, or more traditional tools like paint brush or pencil, is made possible through a pressure rod, which is adjustable in length and tilt.

This light weight head protection is available in two sizes, and easy to adjust to differing head circumferences. It is made of soft leather (Weight approx. 250 g).

### Product contents:

- Head protector with pressure rod

### Indication:

- Well preserved motor activity of the head



### Technical details: Starlight® Active

Size	1	2
Head circumference	up to 53 cm	from 53 cm

# Head protection

## Trial fitting Your head protection supply for the best fit

### STARLIGHT® - Dimension sheet

#### Headprotection

The head dimensions are determined by using a flexible measuring tape according to the drawings below.



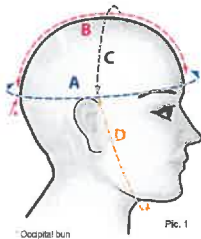
ato form

specialist retailer:

Contact person:

Patient:

clinical picture:

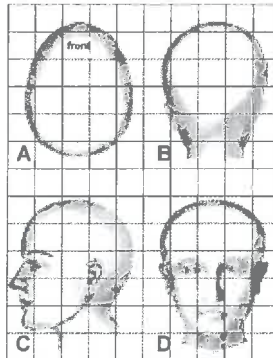


1

- A..... cm (Head circumference, eyebrow height - above the occipital bun)
- B..... cm (Middle of eyebrows height to occipital bun)
- C..... cm (Over the head from ear to ear)
- D..... cm

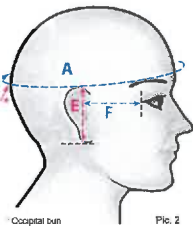
#### Cranium prospects

Pic. 4



If needed, please correct in the upper drawings the front form and/or the shape of the Cranium or rather enter any other anomalies.

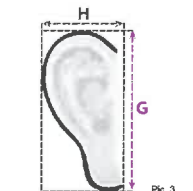
#### Comments



2

Must be filled if Starlight® Protect, Starlight® Protect Plus, Starlight® Go-Sport, Starlight® Plus or Starlight® Vera is required

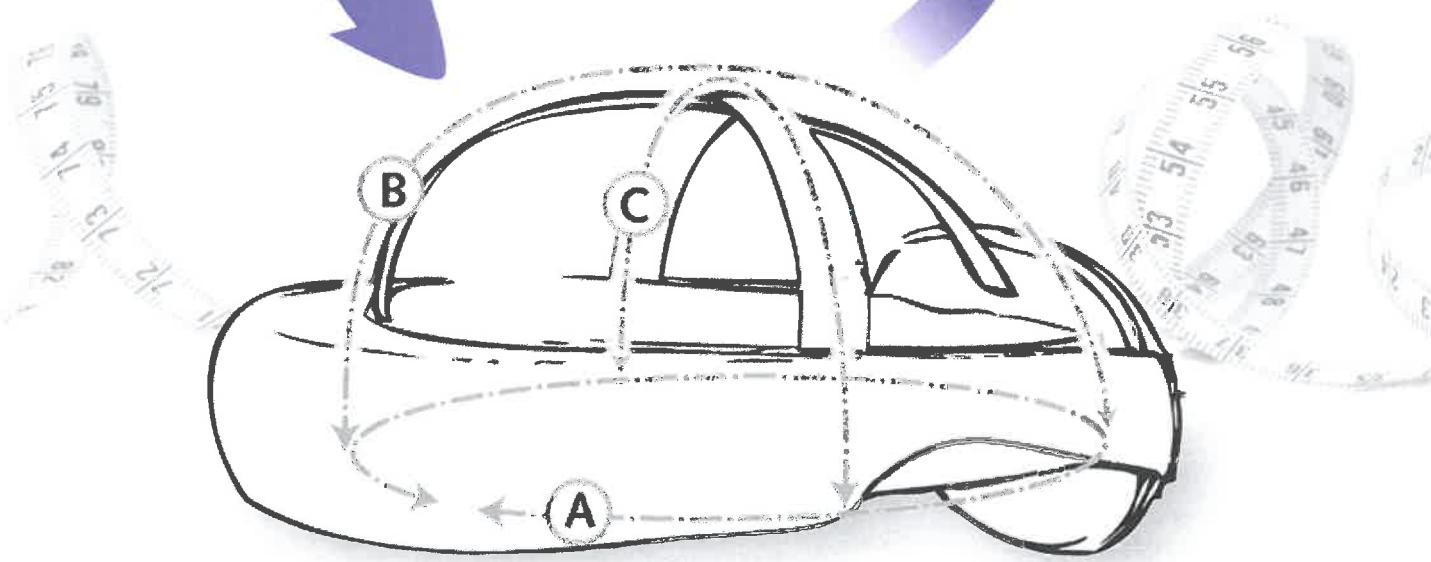
- E..... cm
- F..... cm



3

Must be filled if Starlight® Protect, Starlight® Protect Plus, Starlight® Go-Sport, Starlight® Plus or Starlight® Vera is required

- G..... cm
- H..... cm



...enhanced wearing comfort and secure protection.

Make use of the opportunity, to test the fit of the head protection firstly as a trial fitting on your patient before completion of the head protection.

We will gladly send you the trial fitting to adapt at cost price, no matter which model.

Small corrections to the trial fitting are unproblematic possible. In difficult cases, you will also find the correct dimension.

An easy and secure control of the fit is offered.

We gladly will advise you if you have questions by telephone +49 6093 944-0.



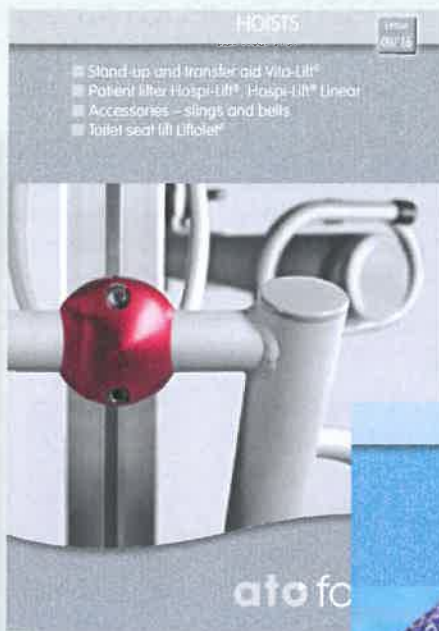
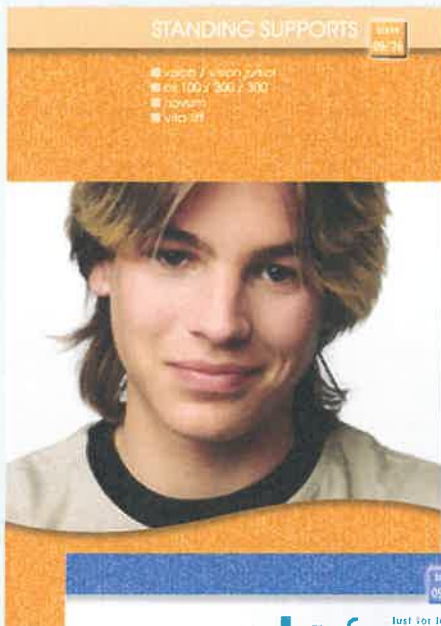
To avoid errors, we advise to **only use our current dimension sheet**



## Comfort and protection on highest level...



# More Publications from ATO FORM



**ato form** ... just for life® gmbh

[www.ato-form.com](http://www.ato-form.com)

**Natasha Kilburn**  
Export

Phone: +496093 944 170  
Mobil: +49151 14830125  
export@ato-form.com

