

# Ramper 2015

# Rolko



**Alu -Ramper  
Gummi-Ramper**

**quick2go<sup>®</sup>**

**Dørtrinsrampe**  
**Door Threshold Ramp**



Rampe lavet af gummi til brug ved dørtærskler og andre forhindringer. Rampen kan udvides takket være det modulære system med clips stik, til indendørs og udendørs brug, skridsikker top og bund. Rampes bredden kan afkortes.. | Solid rubber ramp to overcome door thresholds and other obstacles, expandable due to the modular system with clip connectors, for indoor and outdoor use, slip-resistant top and bottom. Ramp width can be shortened.

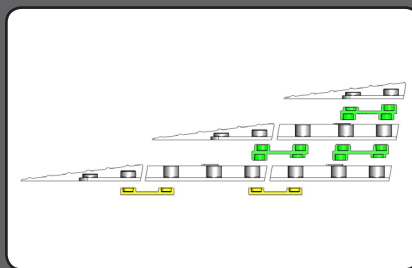
| H  | B   | D   |      |     | Art-Nr.<br>Art.-No. |
|----|-----|-----|------|-----|---------------------|
| 11 | 800 | 80  | 0,46 | 250 | Rampe-TS-11         |
| 22 | 800 | 160 | 1,5  | 250 | Rampe-TS-22         |
| 33 | 800 | 240 | 3,26 | 250 | Rampe-TS-33*        |
| 44 | 800 | 320 | 5,64 | 250 | Rampe-TS-44*        |
| 55 | 800 | 400 | 8,62 | 250 | Rampe-TS-55*        |

Yderligere størrelser på forespørgelse | Other sizes upon request

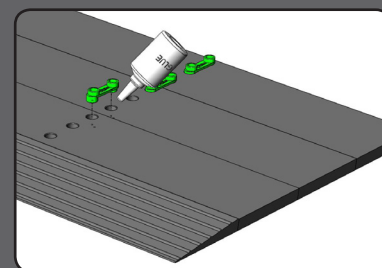
\*Inkl. Lim | \*Incl.glue



Velegnet til dørtrin og andre forhindringer | Suitable for door thresholds and other obstacles



Kan udvides takket være et modulsystem med clip-stik | Expandable due to the modular system with clip connectors



\* Limning af rampens dele er mulig (lim inkluderet) | \*Ramp elements can be bonded (glue included)

# quick2go®

## Aluminium-Rampe Aluminium Ramp



quick2go®



|                                     | L         | Incline | Weight | Height | HMI-Nr. | Art-Nr.    |
|-------------------------------------|-----------|---------|--------|--------|---------|------------|
| 1-teilig   1-piece                  | 1100      | 200     | 3,4    | 300    | 77683   | RAMPE-T1   |
| 2-teilig   2-pieces                 | 1100-2000 | 400     | 6,5    | 300    | 50552   | RAMPE-T2   |
| 3-teilig   3-pieces                 | 1100-2850 | 600     | 9,3    | 260    | 50554   | RAMPE-T3   |
| 3-teilig kompakt   3-pieces compact | 870-2000  | 400     | 6,8    | 260    | 77684   | RAMPE-T2/3 |

\*Max. Vinkelhøjde. \*\*Vægt pr. Stk (kg). Levering: Parvis. Profilhøjde: 50 mm. |  
\*Max. obstacle height. \*\*Weight per piece (kg). Scope of delivery: pair. Profile height: 50 mm.



Teleskop mekanisme med sikkerhedsstift | Expandable and lockable



Sikkerhedsstift | Lock pin



Gummibelagt anlægsflade | Contact surface with rubber pad



Køreflade med perforering | Perforated running surface

# basic

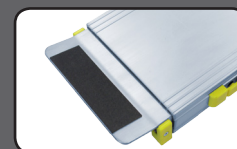
## Aluminium-Rampe Aluminium Ramp



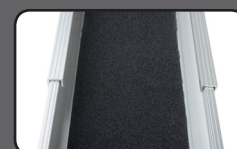
HMI-Nr. 77685



Udløserknap: Forhindrer uønsket afsikring | Expandable with secure release button



Skridsikker kontaktflade | Contact surface with rubber pad



Skridsikker slidbane | Non-slip running surface

basic



|                   | L         | Incline | Weight | Height | Art-Nr.    |
|-------------------|-----------|---------|--------|--------|------------|
| 2-Dele   2-pieces | 1210-2140 | 400     | 4,4    | 200    | RAMPE-2100 |

\*Max. Vinkelhøjde. \*\*Vægt pr. Stk. (kg). Levering: Parvis. Profilhøjde: 44 mm. |  
\*Max. obstacle height. \*\*Weight per piece (kg). Scope of delivery: pair. Profile height: 44 mm.