

mydr1

Automatic Pull-Out Built-In Ramp

An Innovative Built-In Solution For Buildings

Provides access for people with reduced mobility:

- Without footprint on the sidewalk*
- Without modifying shop fronts*
- Without reducing the sales area*



**Crossing one step
in full autonomy**

Automatic Pull-Out Built-In Ramp

An Innovative Built-In Solution For Buildings

The TRAIT D'UNION® Automatic Pull-Out Built-In Ramp is an innovative device to help people with reduced mobility to cross a step. It espouses the slope of the entrance landing and the ramp exit

FEATURES

- The tilting of the floor is combined with the folding of two ramps which reduces the footprint on the sidewalk
- The ramps adapt to a certain extent to incline and slopes of the sidewalks
- Powered by a **24 Volt motor**
- **Folding speed: 0,33 miles/hour**
- **Weight capacity: 800 lbs**
- Dimensions: width **30" to 36"**/ four lengths depending on the height to be bridged
- Maintenance contract

SAFETY AND SECURITY

- A **sound signal** and two rows of flashing LEDs are activated when the ramps are operated
- Contrasting signage is affixed to the ramps for **visually impaired people**
- The movement of the ramps stops
- Side curbs are integrated into the ramps

STRONG AND EFFECTIVE SIGNAGE

- The riser of The TRAIT D'UNION® Automatic Pull-Out Built-In Ramp is printed A pictogram and a decal indicate that the facility is accessible to anyone with reduced mobility

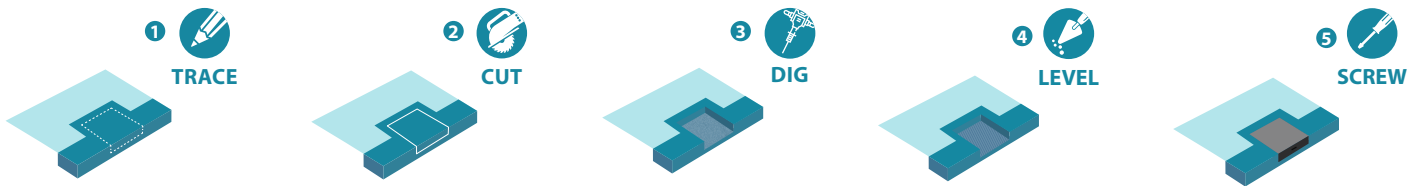
INSTRUCTION FOR USE

- The person with reduced mobility announces their presence to the reception desk via **the OS MOZ Plus call station**
- The receptionist deploys the ramps whose movement is controlled by the opening and closing of the automatic door
- After each entry or exit of persons with reduced mobility, it is imperative to fold the ramps back. If not they are folded automatically
- Other possible trigger methods are possible (please contact us)
- **Complete instructions for use available on www.mydlgroup.com**



INSTALLATION

- The TRAIT D'UNION® Automatic Pull-Out Built-In Ramp is sealed into the step



mydl