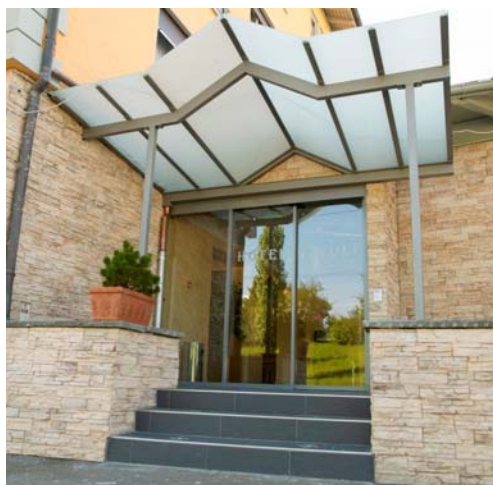




record product line 20 TSA

automatic telescope sliding door 2 or 4 door leaves

The elegante, automatic sliding door for special accesses,
perfect technique, modern and dependable – the record system for larger opening width.



Standard Equipment consists of:

- Complete record door system 20 with all-purpose-door leaf guides, basic accessories, switch panel BDE-D with display, self-calibrating

Mounting variants

- Lintel installation, self supporting or ceiling

Technical Data	
Clear opening width (A) E-TSA and D-TSA	max. 800-3000 mm 1440-4000 mm
Weight of door leaves max. D-TSA E-TSA DUO D-TSA DUO E-TSA	4 x 80 kg 2 x 120 kg 4 x 90 kg 2 x 150 kg
Operating speed D-TSA E-TSA	1.0 sec. 0,7 m opening 1,5 sec. 0,7 m opening
Clear height of passage (G)	up to 3000 mm
Casing dimension (Height) (support length (F) = 2A + 200)	150 or 108 mm
Electrical connections	100-240 V / 50/60 Hz 90 W
Profiles (in mm)	20 up to 10 mm glass thickness 32 up to 24 mm glass thickness (insulated glass) external profiles up to 32 mm (glass thickness depending on profile system)



Optional accessories

- Standard locking device VRR
- Manual unlocking device (HEI inside, HEA outside)
- Floor channel (stainless steel)
- Door leaf guides (lift lock)
- Protective screen
- Actuation and safety sensors (radar, push-button, hygienic sensors, foot pedal, etc.)
- Module for extended functionality FEM (for example: control TOS, third party sensors)
- Mechanical switch panel BDE-M
- Claws profile (burglar resistant)
- Key operated contact SSK
- Lead battery - for emergency service on power failure (emergency opening configurable)
- Drive unit casing cover
- Emergency cut-off function

Basic functions

(customised program)

- Automatic operation with total or reduced opening width
- One way traffic
- Continuously open
- Manual control
- Locked
- Operated lock
- Automatic reversal

Optional features

- emergency cut-off function
- Remote Control (Easy open)
- Locked timer (ext. locking control)
- Door leave surveillance
- Latching surveillance
- Interlock Control
- Pharmacy control
- Creeping function
- Bell control
- Security: adjustable creeping range
- Energy saving function (TOWA)
- User dependable opening width
- SSK opening delayed

Expandable to ...

- escape route system RED or CO48

Use

For all areas of public life, for indoor and outdoor applications, such as

- Administrative and business buildings
- Restaurants and Hotels
- Public buildings, public transport
- Markets, shops and shopping centres
- Hospitals, clinics, nursing homes
- Industry etc.

Your benefit

The special entrance for an aesthetic solution:

- 30 % more opening space for the same size of entrance

record

complex technique - compact solution



record product line 20 TSA

automatic telescope sliding door 2 or 4 door leaves

The elegante, automatic sliding door for special accesses,
perfect technique, modern and dependable – the record system for larger opening width.

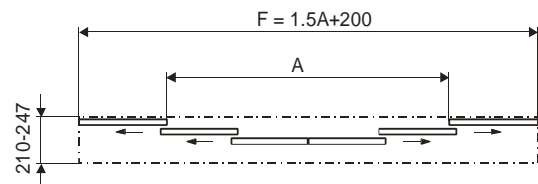
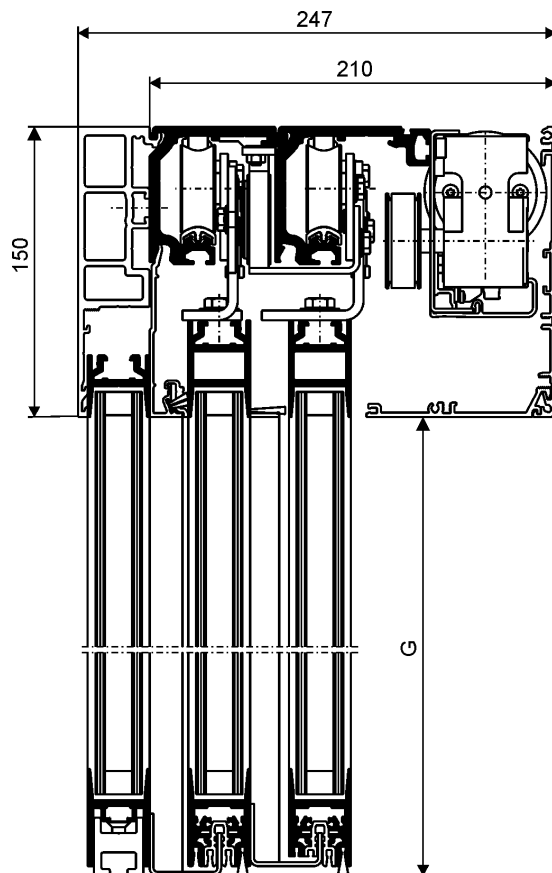
Technical data

Vertical section

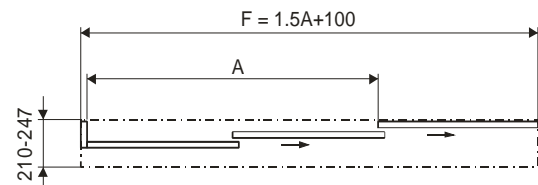
Example with:

- Profile system 32 mm
- Casing H 150 mm

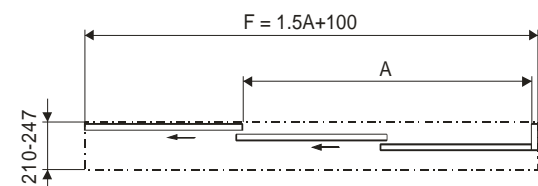
Sliding door 4 leaves (D-TSA)



Single sliding door 2 leaves (E-TSA) right opening



Single sliding door 2 leaves (E-TSA) left opening



A: passage width
G: passage height
F: medium length