

Medintim

# Manuel Penispumpe til rejsningsproblemer



Medintim

Klik pumpehovedet på  
cylinderen.

Medintim

Sæt den største  
hjælpering på.



**6LIV**  
med  
ELSE O

Medintim

Sæt den mindste  
hjælpering ovenpå.

6LIV  
med  
ELSE O

Medintim

Placer  
til sidst keglen.

6LIV  
med  
ELSE O

Medintim

Brug keglen til  
nemmere at glide  
en penisring på.



Medintim

Alternativt kan du bruge hænderne til at trække penisringen nedover hjælperingen.

A close-up photograph of a person's hand adjusting a dial on a medical pump. The pump is connected to a clear plastic tube. The background is a soft, out-of-focus blue. The text 'Medintim' is in the top right, and 'Brug af pumpen på kroppen' is in the center, with 'kroppen' highlighted in a dark blue box.

Medintim

Brug af pumpen på  
kroppen



A close-up photograph of a person's torso and arm. The person is holding a clear plastic medical device with a blue cap. They are using a small white and blue spray bottle to apply a substance to the opening of the device. The background is a warm, orange-toned wall.

Medintim

Påfør  
glidecreme.

Medintim

A photograph of a man's torso and arms. He is holding a clear plastic cylinder with a blue ring at one end, which is attached to a vacuum pump. The pump has a blue handle and a blue ring. The man is using his hands to operate the pump. A blue dot is placed on the blue ring of the cylinder, with a line pointing to a text box.

Sæt penis ind i  
cylinderen.

Medintim

Pres pumpen tæt  
ind imod kroppen  
og begynd at pumpe.

Medintim

Glid penisringen  
af nedover penis.

6LIV  
med  
ELSE O

Medintim

Penisringen holder  
rejsningen (max. 30 min.)



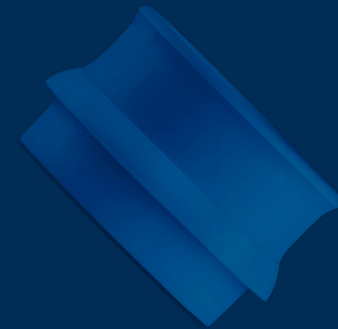
Medintim

Efter brug:  
Fjern penisringen.  
Brug evt. glidecreme.

Medintim

Tilstand efter brug.

# Medintim



FDA registered device  
Made in Germany



KESSEL Medintim GmbH  
Kelsterbacher Str. 28  
64546 Mörfelden-Walldorf  
Germany  
+ 49 (0) 6105/203 720

[www.medintim.de](http://www.medintim.de)