

# RehaCom Quick Start Guide

## Installation

RehaCom software can be downloaded or installed from a USB Flash Drive or DVD.

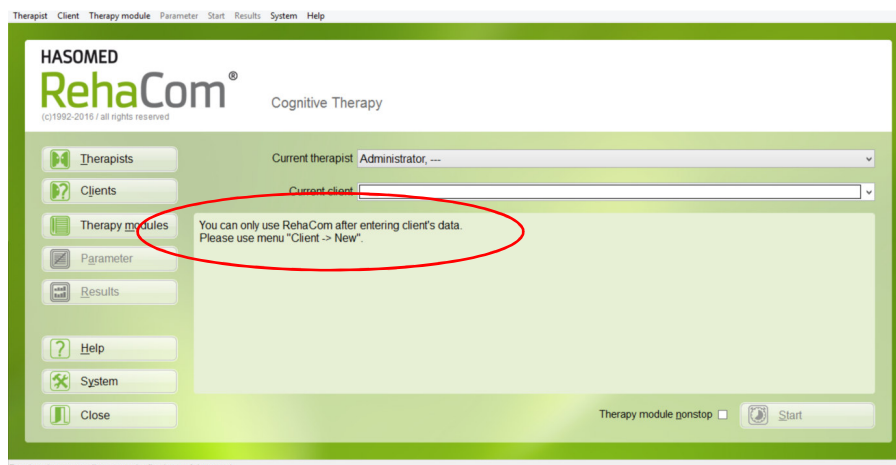
1. a) Download: you received a download link by email. Click on the link. Save/download the file on your computer. When the download is complete open the file. Double-click the setup.exe, click "Yes" and the installation will start. Follow the instructions, use the preset options.  
b) USB Flash Drive/DVD: Start the setup.exe from the installation medium. Follow the instructions, use the preset options.
2. The installation takes a few minutes. Do not shut the computer down until the installation is complete.
3. When the installation is complete a RehaCom icon is installed on your desktop and in your Windows "Start" menu.

## Trial mode

After first installation of RehaCom you have a 21 days free trial, starting from the date of installation. Therefore you need to add at least one therapist and one client as follows:

Double-click the icon to start RehaCom.

**Please create *Therapist* first! Ignore the message:**



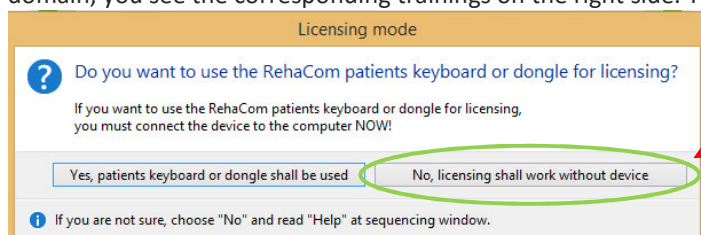
## Therapist

1. Click on the button "Therapist", click "New", fill in the green fields (required), click "Ok".
2. Choose the created therapist and press "Select".

## Client

3. Click on the button "Clients". Fill in the green fields (required), click "Ok".


Select a therapy or screening module. On the left side of the screen you see the therapy modules grouped into four different cognitive domains (Attention/ Memory/ Executive functions/ Visual field). By selecting one domain, you see the corresponding trainings on the right side. To start double-click on the training.



Close the window "Licensing mode". \*\*\*Ignore the license reminder, press "Remind me in 3 weeks".\*\*\*

## Standard use following the trial mode

After the trial period licenses are required. Please order via "System" -> "License" -> "Request an offer". After

receiving the license file (rehacode\_x\_x.RCLIC-file)  do the following:

1. Save the license file (rehacode\_x\_x.RCLIC) on your computer.
2. Start RehaCom and insert your dongle or RehaCom patient's keyboard.
3. Click on "System" -> "Licensing mode" and select "Licensing via patient's keyboard or dongle".
4. Close the window.
5. **Close RehaCom.**
6. Double-click the "rehacode\_x\_x.RCLIC"-file. RehaCom will start and import the code automatically. Close the window.
7. In order to start therapy and/or screening choose one therapist and one client.

**To be able to train RehaCom, please make sure that patient's keyboard or dongle are connected to your computer.**

## Use of PC or RehaCom Keyboard

The RehaCom Keyboard was specially developed for the ease and convenience of patients. Large buttons allow the patient to select or steer and two large "OK" buttons are used to confirm the patient's decisions. The RehaCom therapy software is optimized to be operated by the RehaCom Keyboard. A normal PC Keyboard\* can be used with the following mapping. A set of self-adhesive stickers is available from RehaCom to mark your PC Keyboard.



### RehaCom Keyboard:

"OK" buttons  
"Arrow" buttons  
"Minus" buttons  
"Plus" buttons  
„number 0...9" buttons

### \*PC Keyboard:

left = space bar ; right = return ; mouse click  
cursor keys  
minus-key in the numeric keypad\*  
plus-key in the numeric keypad\*  
number keys

### System requirements RehaCom

Intel Core i3, i5, i7 or comparable  
Windows 7 or newer  
Hard drive: 100GB or more  
Screen: 19"

Ram: 4GB  
Graphics card: DirectX10.1 (Intel HD3000 or better)  
Soundcard: available  
USB Port / DVD Drive