
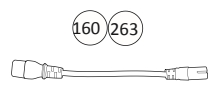
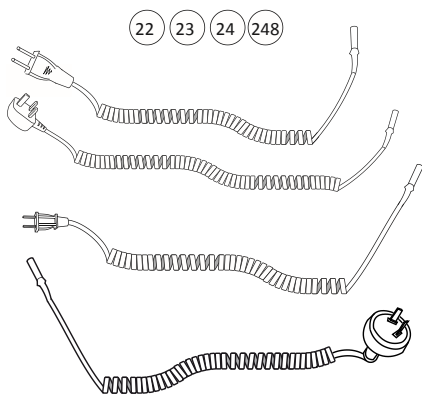
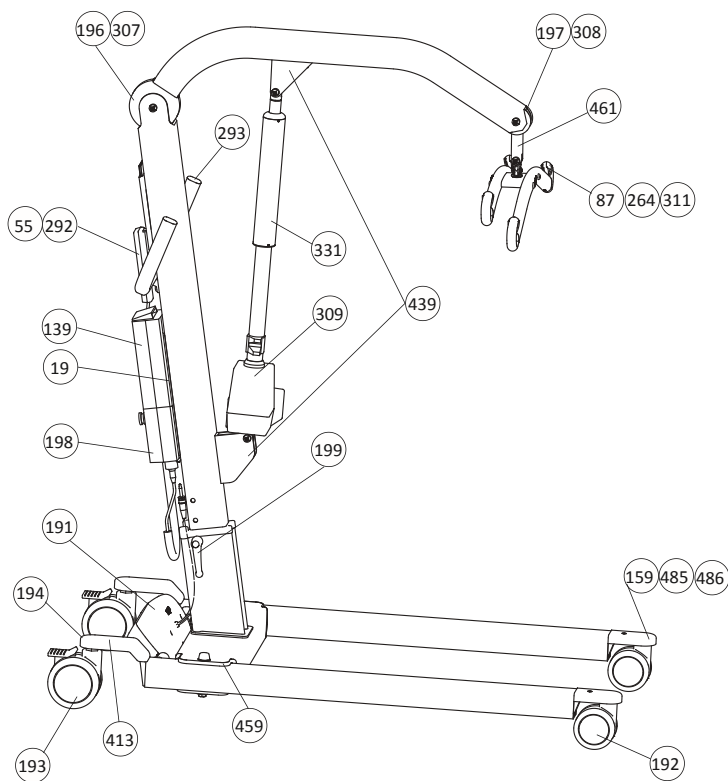


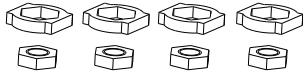
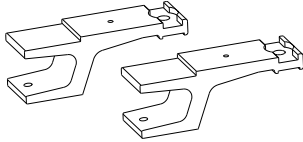
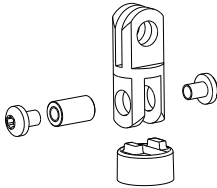
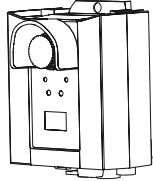

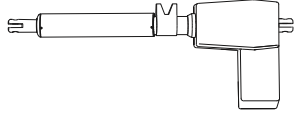
# Spare Parts Positions Viking™ XL mobile lift

| PROD. NO. | PRODUCT  |
|-----------|--|
| 2040003   | Viking XL (Discontinued 2012)<br>S/N: 800 001- 890 000 |


 There are four models of Viking™ XL mobile lift; Prod. No. 2040003, 2040013, 2040033, 2040043. One spare parts list for each model. Make sure to order correct spare part.



## Viking™ M mobile lift, 2040045

| PROD. NO. | POS. NO. | NAME                            | UNIT |  | ASSEMBLY INSTR. |
|-----------|----------|---------------------------------|------|--|-----------------|
| 20090080  | 485      | Fork locking attachment, 4 pair | set  |    | 3SE690208       |
| 20090081  | 486      | Wheel Fork                      | pair |    | 3SE690209       |
| 20490052  | 490      | SlingBar Assembly set           | set  |   | 3SE690210       |
| 20490062  | 546      | Control Box Jumbo Care          | pce  |   | 3SE690231       |
| 20490063  | 547      | Hand control, buttons LED       | pce  |  | 3EN690276       |
| 20490064  | 548      | Actuator LA34 CBJ               | pce  |  | 3EN690277       |