

buddy
roamer™
Buddy Roamer Size 0
Instruction Manual



The Buddy Roamer is a posterior walking aid that provides partial weight bearing postural support with mobility.

The ergonomically designed frame supports body weight while allowing the child to walk around freely and unaided.

This manual will show you how to easily set-up the walker for first use and the adjustments available to enable full functionality of the device. Before assembly, please read the safety, information notices to ensure the Buddy Roamer is used effectively.

Declaration of Conformity

Moorings Mediquip as manufacturer declares that the Buddy Roamer walking aid conforms to the requirements of (EU) MDR 2017/745

Terms of Warranty

The warranty applies only when the product is used according to the specified conditions and for the intended purposes, following all manufacturers' recommendations. A One-year warranty is provided with all Buddy Roamer walking aids.

CONTENTS

- 01. Safety Information – Page 3
- 02. First Assembly – Page 4
- 03. Measurements – Page 5
- 04. Adjustments – Page 6, 7, 8, and 9
- 05. Accessories – Page 10
- 06. Maintenance – Page 11
- 07. Care and Cleaning – Page 11
- 08. Technical information – Page 12
- 09. Contact us – Page 13



01 Safety information



All instructions in this manual should be read fully before use.



The maximum user weight for the Buddy Roamer Size 0 “Walkabout™” is 30Kg.
This weight limit must not be exceeded.



Users should not be left unattended at any time while using the Buddy Roamer.
All assembly and adjustments to be completed by a Competent adult or Engineer.



Only use Moorings Mediquip approved components with the walker. Never modify the device in anyway. Doing so may put the user at risk and will invalidate the warranty.



If any product defects become obvious or if any parts should fail, discontinue use immediately and contact your local dealer as soon as possible to rectify them.



All positional adjustments should be made before the user is put into the walker.
All adjustment bolts, grip knobs and straps must be securely fastened again before use.



The product should be kept away from all direct sources of heat including naked flames, cigarettes, heaters, and radiators. When not in use the walker should be stored in a dry place that is not subject to extremes of temperature.



Follow all daily, weekly, and annual product inspections. (See maintenance (06) section of this manual)



Please keep all plastic packaging material away from children as plastic packaging can present the danger of suffocation.



Recommended for Indoor Use only with competent Supervision.

02 First assembly

Contents of the box:

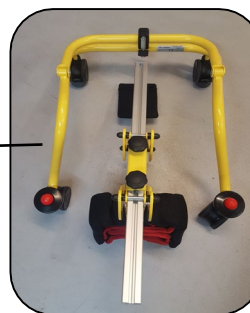
- 1) Base frame Assembly
- 2) Column with Laterals attached
- 3) Central Positioning Bar
- 4) User Manual
- 5) Serial Number Attached to Frame
- 6) Allen Keys



(4mm and 5mm Allen key provided in the plastic bag with this manual)

Step 1

Unpack the Base frame assembly and place on a flat surface as shown.



Step 2

Loosen all the socket screws using the 5mm Allen key provided and slide Column into the slot stone. Ensure both Slot stones are inserted into column.



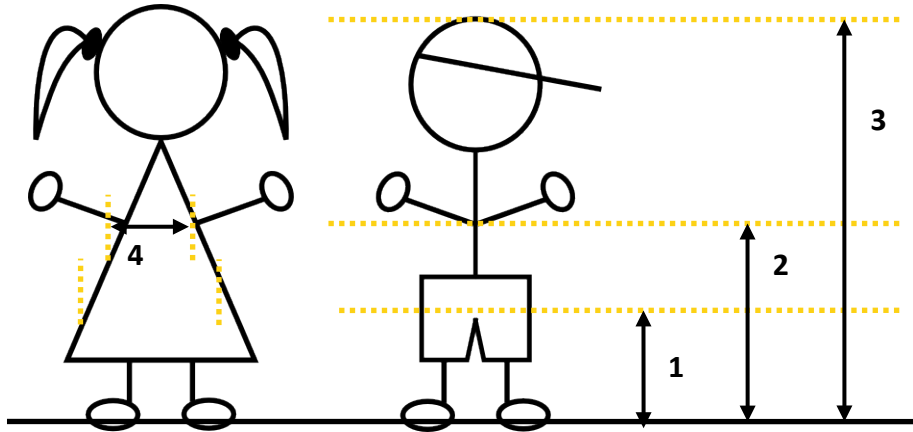
Step 3

Ensure black clamps are in centre of Walkabout Frame and Column at proper height before clamps Are tightened.



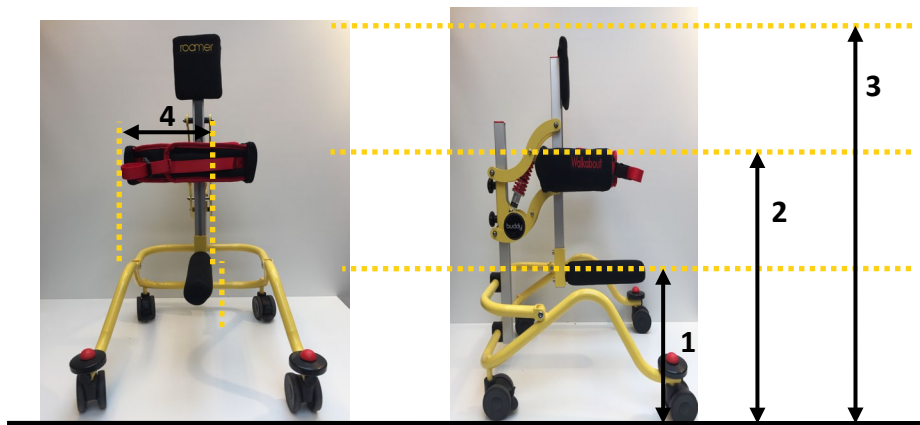
03 Measurements

For each child the following measurements should be taken and recorded in the table below:



| | Measurement | Value (cm / inch) |
|---|----------------|-------------------|
| 1 | Inside Leg | |
| 2 | Underarm | |
| 3 | Overall height | |
| 4 | Chest Width | |

These values correspond to the following adjustments on the walker; these adjustments should be set to the correct value before use:



04 Adjustments

Central Positioning Bar Adjustment

Loosen each of the socket screws on the back of the CPB. This allows the CPB to be raised or lowered along the extrusion track.

**Ensure all Screws are tightened
After adjustments.**



Step 5

Loosen 2 Screws of Headrest Bar and adjust
By sliding bar up or down extrusion track to
Preferred position. Tighten screws when complete.



**Ensure all screws are
tightened after adjustment**



04 Adjustments

Apply Brake on Back Wheel by Pushing down on pedal. Photo 1

1



Wheel Anti-Lock released by pulling out and turning the Metal Nut at back.

To lock just turn back and slot into position. Photo 2

2



Please take a note of the Serial number of your Product and keep it in the box below. You will find it on the base Frame. This will help with any queries should they arise.

S/N -

Adjustments to height.

This can be done by loosening the 2 Knobs shown in photo 1. Slide to position up or down then tighten knobs.

Do not Extend over the Extrusion Bar.



Photo 1

Prone Angle Adjustment

The prone angle can be adjusted forward to a maximum of 10°. Firstly, loosen both of the socket screws on the top clamp, Slide the clamp down along the vertical square post to move the prone angle forward,



Ensure screws are fully tightened again before use.

Do not exceed 10 degrees forward.



Lateral Belt Adjustments

04

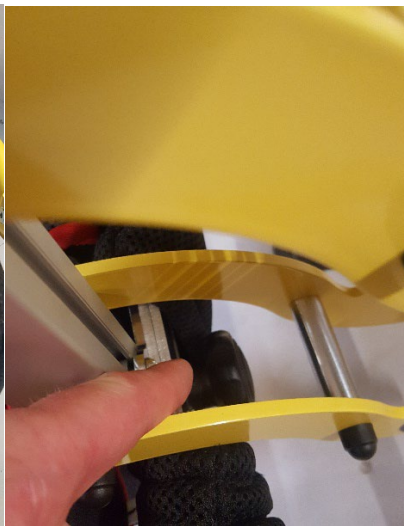
Adjustments to Lateral Belts Step 6

1. Open Buckle at Front of Belt. Photo 1
2. Loosen Bolt at Back of Laterals and Open out to adjust width. Photo 2
3. Adjust height by sliding up or down Extrusion track.
And tighten bolt.

1



2



Careful of moving Parts when making any adjustments

05 Accessories

Shoulder Straps 06

This accessory will be mounted off a horizontal bar attached to the front profile extrusion (Photo 1) It will help hold the user's shoulders in the correct position while in use. These are adjustable in height, width, and angle to deal with different size variations.

1



2



06 Maintenance

Daily

The following checks should be carried out by therapists, carers or parents to ensure the Buddy Roamer Size 0™ is safe for use.

1. Check that all parts are resented and in good condition. Check all Cap Covers are in place with no Screw heads visible.
2. Ensure all adjustment screws, including the plastic clamps, central positioning bar, lateral supports and headrest are fully tightened before use.
3. Perform a functional check of the parking brake, Directional Lock, and anti-roll-back lock (if supplied) to ensure they are in full working order.

Weekly

1. Check of all screw connections to ensure none have come loose.
2. Check all upholstery for signs of wear and tear.
3. Check all Velcro straps and brush off any fluff build up to ensure straps secure correctly.

07 Cleaning and care

1. The upholstery and fabrics can be cleaned by hand while still in place using warm water and a non-abrasive detergent.
2. Ordinary soiling and spillages should be removed as soon as possible using soap and warm water.
3. Metal or plastic components can be cleaned using a damp cloth or soap and water if necessary.

Always ensure product is completely dry before use.

DO NOT use organic solvents or dry-cleaning fluids on any part of the Buddy Walkabout™. Regular cleaning and maintenance will increase the lifespan of the product.

Clean the unit regularly using only standard household cleaning agents. DO NOT use abrasive cleaners.

08 Technical Information

ALL MEASUREMENTS ARE TAKEN FROM THE FLOOR TO TOP OF SUPPORT

| Measurements | Size 0 |
|----------------------------|---------------------|
| Headrest Height | 52cm – 100cm |
| Max User Height | 100cm |
| Min User Height | 50cm |
| Max User Weight | 30kg |
| Weight of Unit | 6.5kg – (Boxed 8Kg) |
| Max Lateral Support Width | 23cm |
| Lateral Support Max Height | 70cm |

| Technical Info | Size 0 |
|-----------------|------------|
| Unit Length | 58cm |
| Unit Width | 52cm |
| Wheel Diameter | 7cm |
| Safe Tilt Range | -10 degree |

MAX USER WEIGHT NOT TO EXCEED 30KG

SAFE TILT RANGE FORWARD 10 DEGREES



MAX Walker Turning distance 140cm

UDI – BUDDY ROAMER Size 0 - 5065012131000

Always take care when making Adjustments / Moving Parts and nipping Hazards.



All Adjustments to be carried out by a Competent Adult

Serial No – 8 Digits - First 2 digits = Year / Next 2 digits = Month / Last 4 Digits = number of Units made. See Example -

22

10

3009

Serial Number –

Date of Manufacture -



For further information, downloads, inspirational stories, videos, features and much more visit:





Moorings Mediquip

51 Slaght Road

Ballymena

Co. Antrim

United Kingdom

BT42 2JH

TEL: +44(0) 28 2563 2777

FAX; +44(0) 28 2563 2272

www.mooringsmediquip.com

Version 4.22

