

Hernik

USER MANUAL

IPA1 **LGT**



Version: 11-2023

Table of contents

I. General information	Page
1.1 Introduction	2
1.2 Purpose and indication	2
1.3 Relevant information	3
1.4 Warranty	3
1.5 Service and repair	3
1.6 Practical instructions	3
1.7 Declaration of conformity	4
1.8 Operating information	5
1.9 Installation in the car - with ISOFIX	6-7
1.10 Adjusting the head rest	8
1.11 Using the 3-point-harness	9-10
II. Safety instructions	
2.1 Safety instructions	11
III. Handling and functions of the basic seat	
3.1 Adjusting the internal 5-point-belt	12
3.2 Positioning of side supports	12
3.3 Adjusting the back angle	13
IV. Using the optional accessories	
4.2 Abduction block	14-15
4.3 Seat depth adapter	16-17
4.4 Security tray	18
V. Guarantee	19
VI. Labeling	19
VII. Maintenance & product care	
7.1 Pulling off the cover	20-21
VIII. Technical characteristics	22

I. General information

1.1 Introduction

You have chosen the car seat "IPAI-LGT" and get hereby a high quality product from our house. We would like to thank you for your trust in us.

To make sure you find joy with this product and to ensure it helps you to make everyday life easier, we present you this manual. It shows you the correct and simple usage and the necessary care and maintenance. To avoid damage due to operator error and to ensure best use, please read the following instructions carefully. If you have any questions or problems, please contact your dealer. We wish you a trouble-free use and hope that our products meet your expectations.

We reserve the right to make technical changes to the version described in this manual.

Before installing in your car and using it for the first time, please read and follow the installation instructions on pages 5 - 8. Please ensure that the instructions for use remain with the product and are therefore available to everyone who uses the seat.

Your HERNIK GmbH

1.2 Purpose and indication

The IPAI-LGT was developed for the transport of children with special needs (size range 100 - 150 cm) in cars. Children with poor head or trunk control (e.g. infantile cerebral palsy, muscular dystrophy, hypotension) can be supported in their posture by means of individually positioned side supports and special upholstery which ensures a safe transportation.

Important optional accessories can be used to address specific needs such as: the seat angle or the installation of a stable abduction block. More in chapter IV.

I. General information

1.3 Relevant information

The IPAI-LGT car seat for disabled children consists of two modules:

1. A standard child car seat from Römer-Britax (please refer to the manufacturer's manual for use).
2. Adaptation module with accessories, which offers the possibility to equip the car seat according to individual needs. Please refer to the instructions for use from HERNIK GmbH.

1.4 Warranty

A warranty can only be accepted if the product is used under the specified conditions and for the intended purposes. The manufacturer is not liable for damage caused by components and spare parts which were not approved by the manufacturer.

1.5 Service and repair

Service and repairs on the IPAI-LGT may only be carried out by specialized dealers. If you have any problems, contact your local dealer. For repairs you will only receive original spare parts.

1.6 Practical instructions

The car seat will be delivered fully assembled. Upon delivery, the dealer will instruct the user how to use the device by using the manual. The specialist dealer should install together with the user the car seat in the car and, if available, adjust the Isofix strap or the clamp.

When installing the car seat, it is best to hold it with one hand in the center of the front and the other at the top. In order to achieve an optimal sitting position, it is necessary to adjust the car seat individually to the circumstances of the child. This should always be done by the dealer.

Please note that Isofix adapters or clamp bows are not mandatory as they are not relevant to safety.

I. General information

1.7 Declaration of conformity



Auf der Gröb 2c
83064 Raubling
info@hernik.de
www.hernik.de
☎ +49 8035-9580448
✉ +49 8035-9580446

DECLARATION OF CONFORMITY

Manufacturer: HERNIK GmbH

Address: Auf der Gröb 2c
83064 Raubling
Germany



Product: car seat for children with disabilities
Type: IPAI-LGT

UDI-PI	Description	Item number
4260675480088	IPAI-LGT, grey-black	460000-E

Classification: this is a medical device of class I according to the classification rules in Annex VIII

I, the signer, declare under sole responsibility that the above product complies with the essential requirements of the following guidelines and standards (Annex 1 of MDR (EU) 2017/745). The conformity assessment was carried out in accordance with Annex IV of the MDR (EU) 2017/745. The product is marked with the CE mark according to the above mentioned guideline.

- Annex 1 of MDR (EU) 2017/745
- ECE R129/03 test standard for child car seats

01.12.2023
place, date

Markus Jacksch
name

Hernik
Agentur für Reha-Technik
Bodenreistraße 25
83064 Raubling
Tel: +49 8031 206044
Fax: +49 8031 206045
signature

Auf der Gröb 2c
83064 Raubling
Deutschland

HBR 125064
St-Nr.: 9143 813 37744
USt-IdNr.: DE201261298

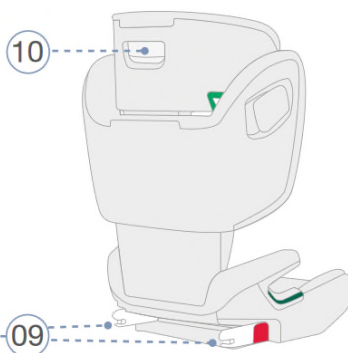
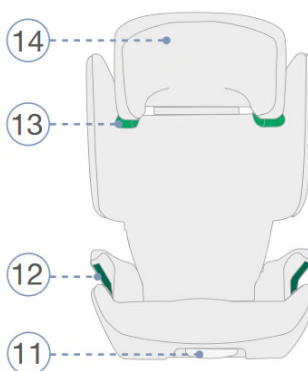
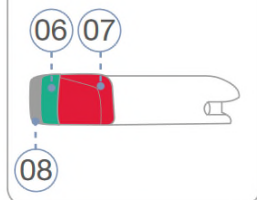
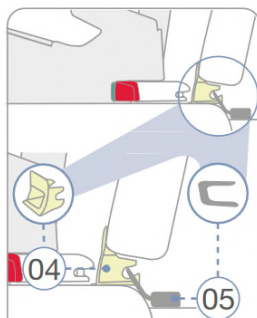
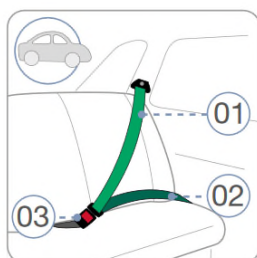
Sparkassenbank München
IBAN: DE12 7015 0000 0019 1406 72
BIC: SSKMDE33

Geschäftsführer:
Markus Jacksch
Gerichtsstand: München

I. General information

1.8 Operating information

- | | |
|--------------------------------|-----------------------------|
| 01 Diagonal belt | 08 Locking button |
| 02 Lap belt | 09 ISOFIX locking arms |
| 03 Seat belt lock | 10 Adjustment button |
| 04 Insertion aid | 11 ISOFIX adjustment button |
| 05 ISOFIX installation bracket | 12 Dark-green belt guide |
| 06 Green area | 13 Light-green belt holder |
| 07 Red release button | 14 Headrest |



I. General information

1.9 Installation in the car - with ISOFIX

The IPAI-LGT will be installed tightly with the ISOFIX-locking arms (09) in your car. Your child will then be buckled up with the vehicle's 3-point belt.

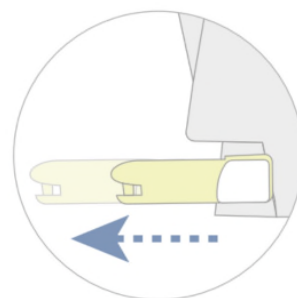
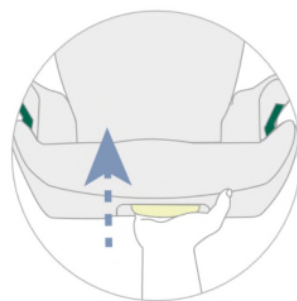
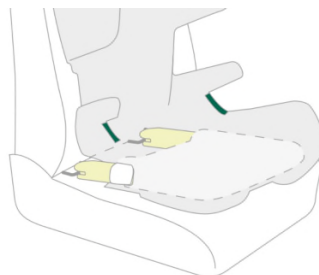
1. If your vehicle is not equipped with ISOFIX insertion aids as standard, clamp the two insertion aids (04), which are included in the delivery of the seat, with the cutout facing upwards, onto the two ISOFIX installation brackets (05) of your vehicle.

TIP! Die ISOFIX fixation points are located between the seat and the back of the vehicle seat.

2. Move the vehicle seat's headrest to it's uppermost position.
3. Keep pushing the ISOFIX adjustment button (11) and slide the ISOFIX locking arms (09) fully out.

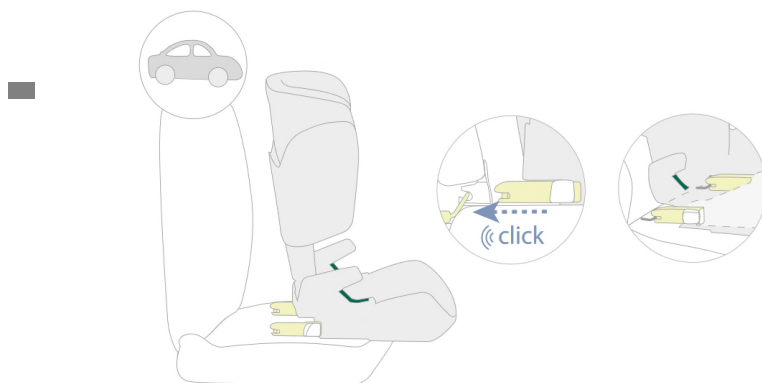
Note! If your seat is equipped with the seat depth adapter, extend the adapter to reach the adjustment button (more on page 15)

4. Press the locking button (08) and the red release button (07) against each other on both sides of the seat. This ensures that both hooks on the ISOFIX locking arms (09) are open and ready for use.
5. Place the child seat in the direction of travel on a vehicle seat approved for use. Make sure that the backrest lies flat against the backrest of the vehicle seat.
6. Position the two ISOFIX locking arms (09) directly in front of the two insertion aids (04).

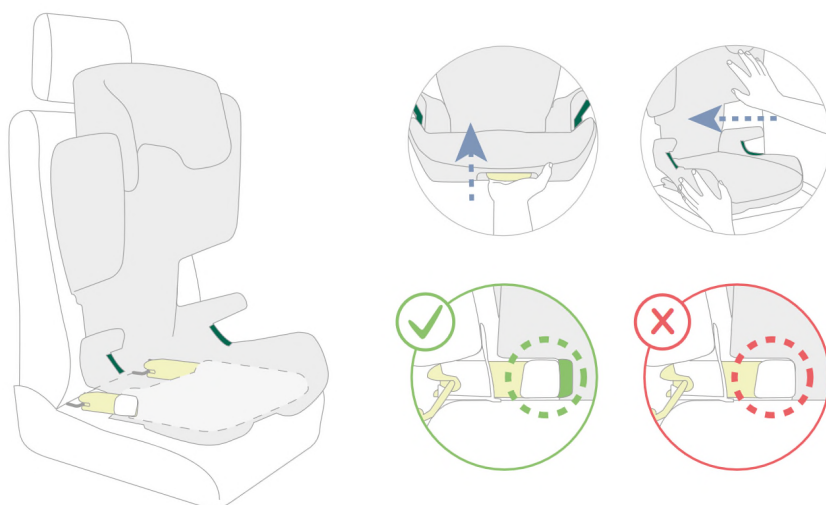


I. General information

7. Push both ISOFIX locking arms (09) into the insertion aids (04) until the ISOFIX locking arms (09) snap into place on both sides with a „click“ sound.



8. Keep pushing the ISOFIX adjustment button (11) and push the child seat back as far as possible.
9. Wiggle the child seat to ensure that it is securely attached and check, if the green area (06) is visible on both locking arms.

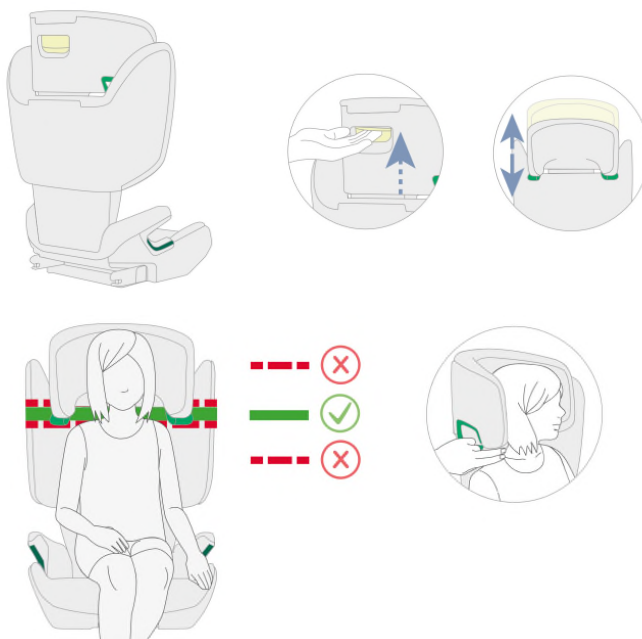


I. General information

1.10 Adjusting the head rest

A correctly adjusted head rest (14) ensures the optimal course of the car's diagonal belt (1) and offers your child maximum protection. The head rest (14) must be adjusted so that there is still room for two fingers between the shoulders of your child and the headrest (14).

1. Grasp the adjustment button (10) on the back of the head rest (14) and pull it up. Now the head rest is unlocked.
2. Now you can push the unlocked head rest (14) to the required height. As soon as you release the adjustment handle (10), the head rest (14) locks.
3. Place the child seat on the vehicle seat.
4. Let your child sit down in the child seat and check the height. Repeat this process until the head rest (14) is at the correct height.



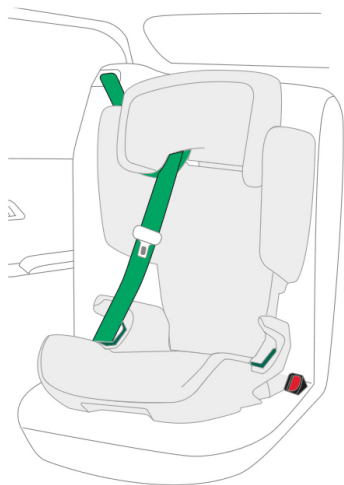
I. General information

1.11 Using the 3-point-harness

1. Pull out the vehicle seat belt (1) and guide it in front of your child through the light-green belt holder (13) to the seat belt lock (3) .

ATTENTION! Make sure that the vehicle belt is not twisted, otherwise the full protective effect of the restraint system is not given.

2. Place the diagonal belt (1) and the lap belt (2) in the dark-green belt guide (12) of the car seat.



I. General information



3. Snap the buckle into the vehicle seat belt lock (3) with a **CLICK**.

ATTENTION! The lap belt (2) must run as low as possible over your child's hips on both sides.

TIP! If the backrest covers the belt holder (13), you can adjust the headrest (14) upwards. The diagonal belt (1) can now be easily inserted. Now put the headrest (14) back to the correct height. Make sure that the button on the belt holder (13) is completely closed.

5. Make sure that the diagonal belt (1) runs over your child's collarbone and not against the neck.

TIP! You can also adjust the height of the headrest (14) in the vehicle.

ATTENTION! The diagonal belt (1) must run diagonally to the rear. You can regulate the course of the belt with the adjustable belt deflector of your vehicle.

ATTENTION! The diagonal belt (1) must never lead to the belt deflector on the car. If this is the case, then only use the child seat in the back seat.

II. Safety instructions

2.1 Safety instructions

- Before use, the components must be checked for perfect function and condition.
- The user manual must always be carried with the child car seat.
- The safety of your child is only guaranteed if the seat is installed correctly and if the child is fixed exactly.

Please check:

- A) whether the lap belt sits in the left and right dark-green belt guides.
- B) whether the diagonal belt sits in the dark-green belt guide on both sides
- C) whether the diagonal belt sits in the light-green belt guide.
- D) whether the seat belt is pulled tight and not twisted.
- E) whether the child is correctly strapped in.
- F) that no textiles are clamped.

- Make sure that no solid objects like pens, belt buckles, etc. are placed between the child and the seat belt. This could lead to injuries in the event of an accident.
- Explain to your child how important it is to be well-secured and that the course of the straps should not be changed. It shouldn't pull on the straps, nor open the belt buckles.
- Do not make any changes to the car seat, otherwise you risk your child's safety.
- The car seat must not be damaged by moving parts in the car or by doors.
- Never leave your child alone in the child car seat.
- Inform your passengers how your child can be taken out of the seat after an accident.
- After an accident, the entire child car seat has to be renewed.

III. Handling and functions of the basic seat

3.1 Adjusting the internal 5-point-belt

First extend the straps by simultaneously pressing the grey button on the belt adjuster **1** and pulling on the straps. Now put the straps over the child's shoulders.

Then insert the two metal tongues into the belt buckle **3** until they click into place. Then tighten the belt system by pulling on the left and right end of the strap **2** until a stable sitting position has been found.

If you want to take the child out of the car seat, first loosen the belt by pressing the grey button on the belt adjuster **1** and pulling the straps. Then the belt buckle **3** can be opened with a firm push on the red round button.



3.2 Positioning of side supports

As standard, the IPAI-LGT is equipped with a pair of anatomically shaped thorax pads **4**. This can support children with poor upper body control in their posture.

Loosen the thorax pads by pulling gently until the Velcro connection is released. Since the inside of the side back guidance was covered with Velcro elements, a suitable position can now be found completely free by fixing it again with Velcro.



III. Handling and functions of the basic seat

3.3 Adjusting the back angle

If the IPAI-LGT was installed in the car using ISOFIX, it is possible to pull the seat unit forward by driving out the ISOFIX locking arms **2**. Since the back and seat elements are equipped with a movable joint, the back angle is therefor opened. Your child has immediately taken a relaxed position.

Therefor press the grey adjustment button **1** on the front of the seat and pull the seat unit forward. The back angle opens. For a smaller angle, any intermediate positions can be selected.

If later your child wants a more active sitting position, e.g. after it has slept, you can push the seat unit backwards in the same way, making the back angle steeper.



IV. Using the optional accessories

4.2 Abduction block

Installation instructions:

1. Place the IPAI-LGT on a stable work surface.
2. Now take the mounting plate **1**, the four Velcro strips **2**, and the abduction block **3** out of the packaging.
3. First remove the white protective film from the four Velcro strips. Make sure, the underside of the car seat is clean - it must be free of dust and moisture. Now apply the Velcro strips to the underside of the seat part - see marking in figure 1.
4. Now hang in the mounting plate (see figure 2). The U-profile **4** must be placed on the plastic edge. **5** The mounting plate must be placed flat on the underside of the seat part, whereby the Velcro strips form a connection.
5. Turn the IPAI-LGT over again. Now the abduction block **3** can be inserted into the holder and fixed using the rocker arm.

TIP! If the abduction block **3** is not used, the mounting plate should be removed. Otherwise there is a risk of injury due to protruding metal parts.



fig. 1



fig. 3

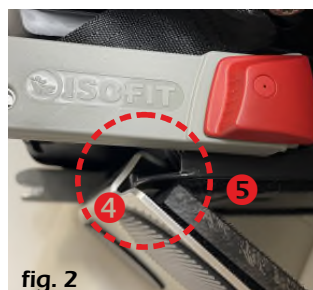


fig. 2

IV. Using the optional accessories

Adjustment of the abduction block

The depth of the abduction block can be adjusted.

- 1) Loosen the 2 screws **1** at the bottom of the seat using an allen key (see figure 1)
- 2) The bracket **2** can now be moved and fixed in the desired position.
- 3) Place the abduction block **3** into the bracket and fix it with the rocker arm **4**.



fig. 1



IV. Using the optional accessories

4.2 Seat depth adapter

1. Place the IPAI-LGT on a stable work surface.
2. Now take the mounting plate **1**, the four Velcro strips **2**, and the seat depth adapter **3** out of the packaging.
3. First remove the white protective film from the four Velcro strips. Make sure, the underside of the car seat is clean - it must be free of dust and moisture. Now apply the Velcro strips to the underside of the seat part - see marking in figure 1.
4. Now hang in the mounting plate (see figure 2). The U-profile **4** must be placed on the plastic edge **5**. The mounting plate must be placed flat on the underside of the seat part, whereby the Velcro strips form a connection.
5. Turn the IPAI-LGT over again. Now the seat depth adapter **3** can be inserted into the holder (see figure 3).



fig. 1

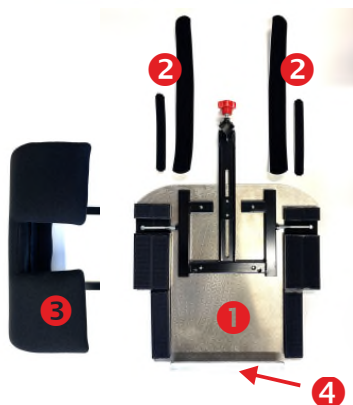


fig. 3

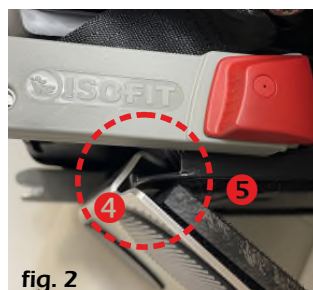


fig. 2

IV. Using the optional accessories

Adjustment of the seat depth adapter:

The seat depth adapter can be adjusted according to the desired seat depth.

- 1) Loosen the 2 screws ❶ on both sides of the car seat using an allen key.
- 2) The seat depth adapter ❸ can now be moved to the desired position.
- 3) Fix the 2 screws ❶ again.



IV. Using the optional accessories

4.3 Security tray

Installation instructions:

1. Let the installation of the security tray be shown to you at the handover of the car seat.
2. Put the security tray **1** on the car seat after sitting your child into it and strapping it on.
3. Secure the pad, using the supplied Velcro straps **2**, with fastening them on the back of the car seat.
4. Your child's arms should rest on the table, which leads to an upright seating position. This supports the upper body.
5. Make sure, you avoid the risk of toys, which may be on the upholstery. Do not use hard, solid or sharp edged objects.



V. Guarantee

Hernik products are designed and manufactured in accordance with strict quality standards. If, in exceptional circumstances, you have cause for complaint, Hernik GmbH guarantees, in accordance with the terms and conditions of delivery:

- 24 months warranty on all solid parts from date of delivery.
- 12 months warranty on all moving parts from date of delivery.

For parts that were not manufactured by Hernik GMBH, please refer to the warranty policy of the respective manufacturer (Römer-Britax Kindersicherheit GmbH).

No guarantee can be given for special constructions, unless this is due to manufacturing or material defects. Here the replacement of the objectionable product is granted for 12 months.

Claims under this guarantee are subject to the device being properly installed and used in accordance with the instructions provided.

Warranty is void where modifications or improper repairs, without prior consultation with the manufacturers are carried out. Warranty is void where a device is improperly fitted.

Further claims, for whatever legal reason, in particular claims for direct or indirect damages are excluded.

VI. Labeling

You will find the following identification on the back:



Please read the user manual
before use!

VII. Maintenance & product care

7.1 Pulling of the cover

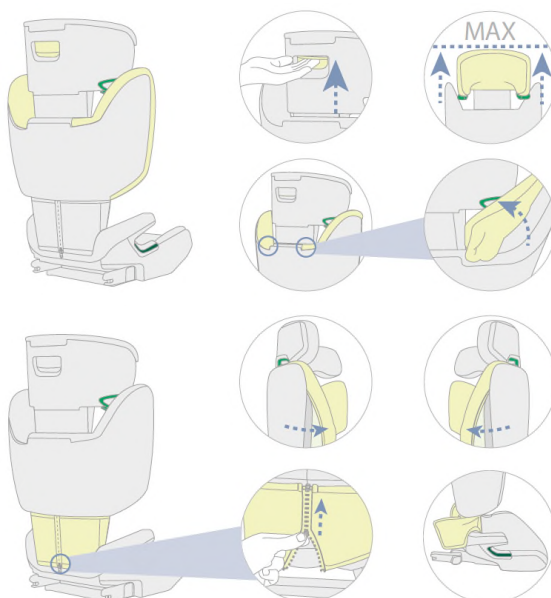
Please ensure that you only use original BRITAX-RÖMER or HERNIK replacement seat covers, as the seat cover is an integral part of the child safety seat and fulfills important functions to ensure the perfect functioning of the seat. Replacement seat covers are available from your dealer.

- The cover can be removed and washed with a mild detergent in the fine washing program of the washing machine (30 ° C). Please refer to the instructions on the washing label of the cover.
- The plastic parts can be cleaned with soapy water. Do not use abrasive cleaning material (such as solvents).

ATTENTION! The child safety seat must not be used without the seat cover.

Backrest cover:

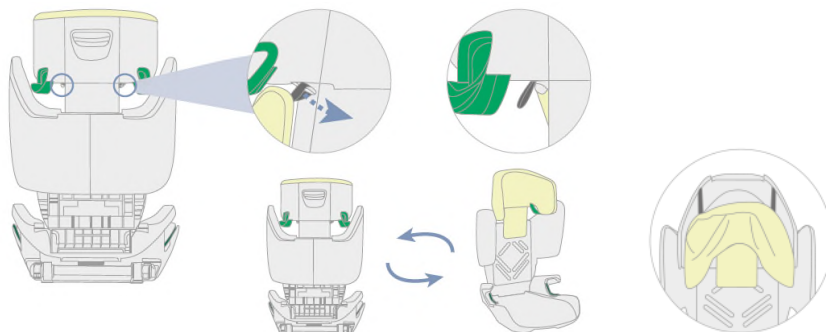
1. Move the headrest of the car seat to its uppermost position.
2. Unhook the hooks (19) on the back of the backrest.
3. Pull off the upper part of the cover and fold it forward onto the seat.
4. Now open the zip at the back of the seat.
5. The backrest cover can now be completely removed.



VII. Maintenance & product care

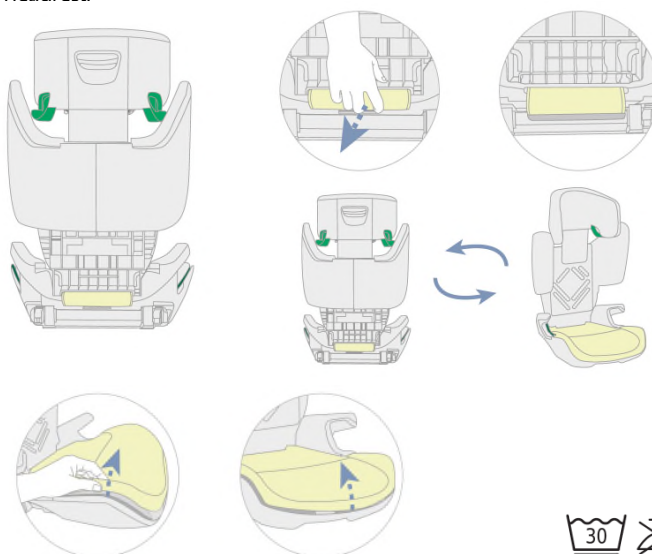
Headrest cover:

1. Unhook the cover loops on the back of the backrest.
2. Turn the car seat around.
3. Pull off the cover of the headrest.



Seat cover:

1. Loosen the cover on the back of the seat.
2. Turn the car seat around.
3. Pull off the cover of the seat. To do this, unhook both hooks on the underside of the headrest.



VIII. Technical characteristics

	IPAI-LGT
SEAT WIDTH (pelvis)	31 cm
SEAT WIDTH (knee)	42 cm
SEAT DEPTH	32 cm
BACK HEIGHT	41 - 54 cm
CROWN HEIGHT	59 - 74 cm
HEIGHT LATERALS	20 - 33 cm
DISTANCE LATERALS	14 - 28 cm
angle	85° - 120°
total height	68 - 88 cm
total width	44 cm
total depth	42 cm
weight	from 7,0 kg
capacity	36 kg
size range	100 - 150 cm

Standard equipment:

- 5-point-harness with upholstery, height adjustable
- ISOFIX adapter, adjustable
- head rest, height adjustable
- side impact protection SICT
- three parts, removable and breathable cover (washable at 30 °C)
- side supports, height adjustable



HERNIK GmbH
Auf der Gröb 2c
83064 Raubling • Germany

☎ +49 8035-9580448 • 📠 +49 8035-9580446
✉ info@hernik.de • 🌐 www.hernik.de