

# MEDICARE 50 mattress

The upper visco-elastic surface is 7 cm height with a density of 60 kg and an open cell structure that reacts to body temperature, pressure and dampness, allowing for better air flow between the patient's skin and the base.

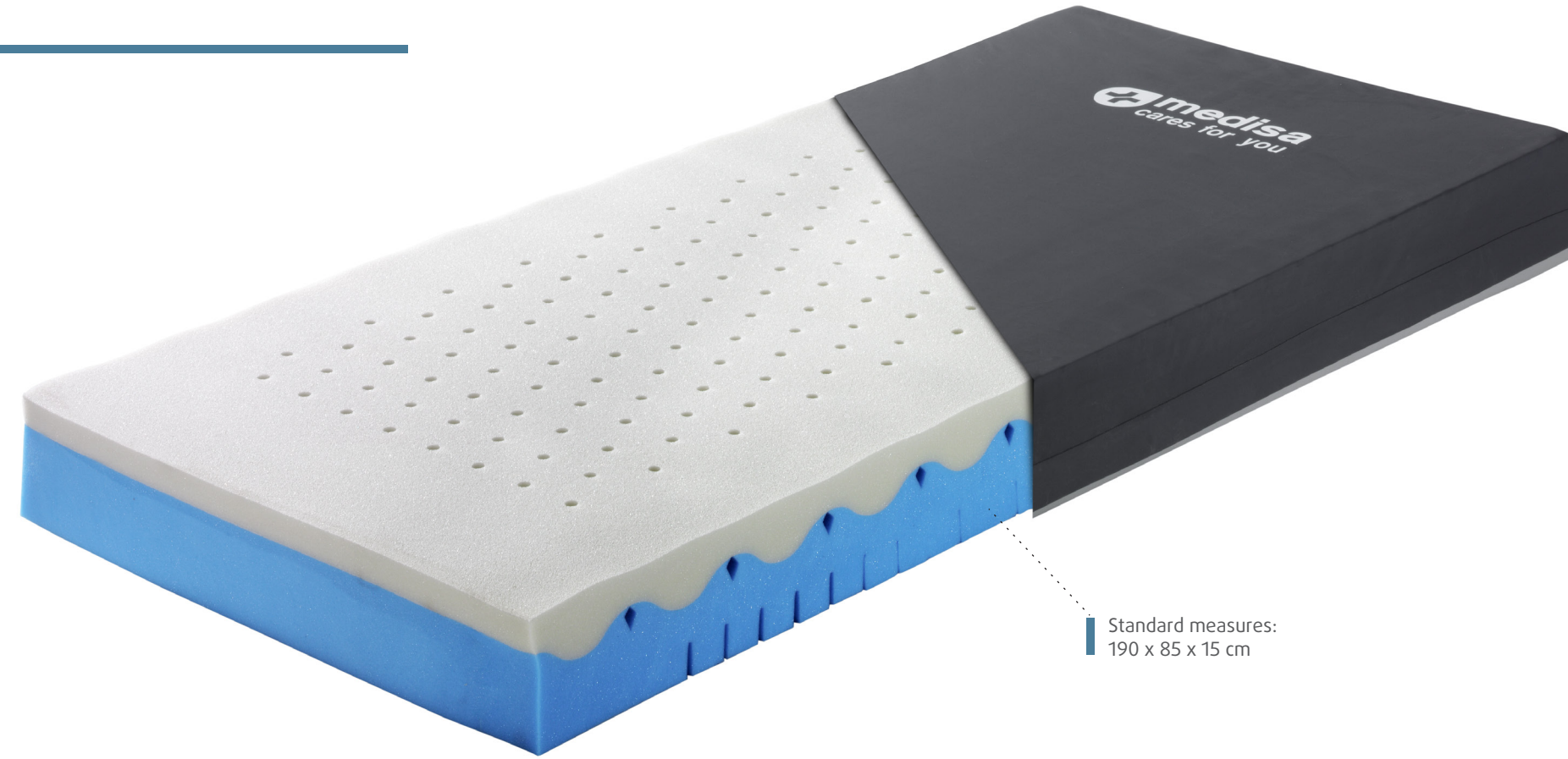
It is thermal sensitive, so it reacts to body heat, automatically and optimally adjusting to the body. It distributes the body weight, increases the surface of support and thus reduces pressure points, facilitating blood circulation, contributing to ulcers prevention and patient's therapy in general.

Its open cellular structure and its multiple alveolar channels allow a continuous air flow and perspiration, favoring the absorption of dampness and maintaining a comfortable and constant body temperature.

The lower part of the core is 8 cm height of Biocell Maxipore, a material made up of millions of open cells communicated with each other that also allow the free air flow from the upper alveolar canals, ensuring a constant oxygenation and perspiration of the mattress.

It does not present medical contraindications, nor harmful or toxic elements for health. Oko-tex Standard 100 Certificate. Free of latex. Self extinguishing.

It can be perfectly adjusted to articulated hospital and geriatric beds, it does not affect to the use of the siderails. High maximum load capacity. The mattress core consists of denser foam, thanks to which the mattress has a load capacity of 230 kg.



Standard measures:  
190 x 85 x 15 cm

## TECHNICAL DATA

	Biocell Technology	Certipur	Transpiration channels	Passive massage	Breathable	Heat-sensitive Viscoelastic	Pressure relief	Bedsore prevention	Improves circulation	Long convalescences	Ergonomic	Air flow system	Temperature regulation	Permanent perspiration	Flame retardant	Articulable	Okotex	Ecological	CFC free	Swiss quality
Medicare 10 Mattress	✓	✓									✓					✓	✓	✓	✓	
Medicare 20 Mattress	✓	✓	✓	✓				✓			✓					✓	✓	✓	✓	
Medicare 30 Mattress		✓	✓	✓		✓	✓	✓	✓	✓	✓	✓	✓			✓	✓	✓	✓	
Medicare 40 Mattress						✓	✓	✓	✓	✓	✓	✓	✓	✓	✓	✓	✓	✓	✓	✓
Medicare 50 Mattress						✓	✓	✓	✓	✓	✓	✓	✓	✓	✓	✓	✓	✓	✓	✓

REV. 12/2017 NOTE: Measures and features of the products can be modified without prior notice



## MEDICARE MATTRESSES

Ergonomic clinical furniture  
with impeccable design



[www.medical-iberica.com](http://www.medical-iberica.com)

Lanzahita, 6 - Pol. Ind. Albarreja - 28946 Fuenlabrada, Madrid (Spain) - Ph. 91 208 94 00 - F. 91 208 94 01



## MEDICARE 10 mattress

Polyurethane foam mattress with 25 HR density, formed by thousands of cells communicated to each other. Provides the firmness and adaptability necessary to enjoy a healthy rest, allowing a high recovery capacity.

It does not present medical contraindications, no harmful or toxic elements for health. Oko-tex

Standard 100 certificate. Latex free.

It can be perfectly adjusted to articulated, hospital and geriatric beds; it does not affect in the use of the siderails.

It can be provided for bariatric patients.



Standard measures:  
190 x 85 x 13 cm

## MEDICARE 20 mattress

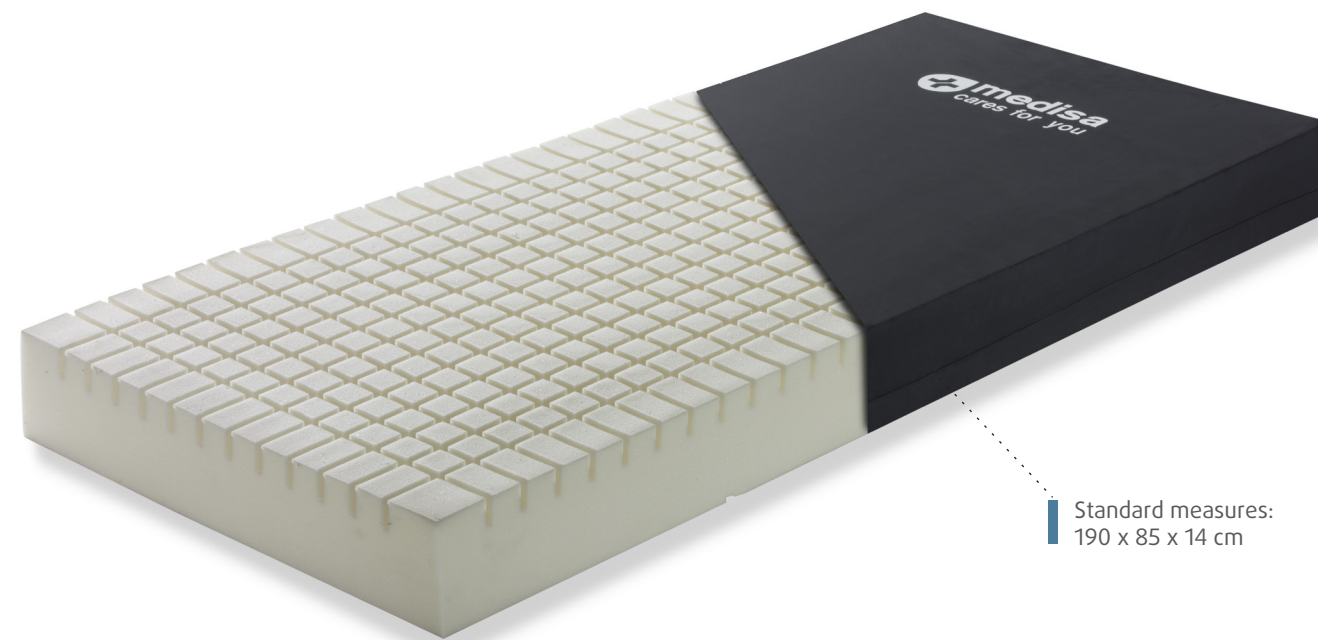
It has been designed with single core foam with a HR-30 density. The upper surface of the mattress has transverse and longitudinal profiles evenly distributed over its entire surface. Due to this design, there is a better air circulation between the patient and the base, helping the patient perspiration and reducing the skin dampness.

It also helps to optimally distribute pressure, ensuring the necessary adaptation to achieve a healthy rest.

It does not present medical contraindications, nor harmful or toxic elements for health. Oko-tex Standard 100 certificate. Latex free.

It can be perfectly adjusted to articulated, hospital and geriatric beds; it does not affect in the use of the siderails.

It can be supplied for bariatric patients. Mattress core allows supporting a high working load of 230 kg.



Standard measures:  
190 x 85 x 14 cm

## MEDICARE 30 mattress

The upper surface of the mattress is made of visco-elastic foam with a HR 50 density, with thermosensitive open cell. Due to its exceptional physical properties it maintains the memory instants after the pressure is not applied.

It perfectly adapts to the body shape and makes a mold of it, avoiding pressure points and distributing lying area, helping a correct blood circulation.

Thanks to the open cell system, it allows a free air circulation and the mattress perspiration, avoiding a high level of dampness.

The lower part is made by HR30 density polyurethane foam, allowing the perfect support for the upper visco-elastic layer, assuring an optimal firmness and flexibility for the body.

It does not present medical contraindications, nor harmful or toxic elements for health. Oko-tex Standard 100 certificates. Free of latex.



Standard measures:  
190 x 85 x 13 cm

## MEDICARE 40 mattress

The upper surface is made of graphene viscoelastic material of HR60 density; with high permeability due to its open cellular structure, which provides a better performance in air flow. The insertion of expandable graphite particles provides thermoregulatory properties. In addition to these features, its multiple area design on the surface develops an innovative concept of ergonomics through its forms, helping the relaxation of the body and distribution of weight, to release pressure points and prevent bedsores. This mattress can be used with patients with grade III ulcers.

The HR 40 Visco Respirel middle layer has an important property; it is reticulated, as well as it maintains a great air permeability favoring the perspiration of the mattress and responding to the maximum demands of comfort, freshness and durability.

Both viscoelastic and thermal sensitive layers react to body heat, adapting perfectly to the anatomy of the body, producing the desired effect of relieving pressure and improving blood circulation relief of pressure and perspiration which are essential characteristics of the lying surfaces that contribute to reduce bedsores.

The lower part of the mattress consists on high resilience Biocell HR30 polyurethane foam, open cell, with transverse channels for articulation. It is the ideal material to support the viscoelastic layer, since it more increases the adaptability of the mattress, if possible.

It does not present medical contraindications, nor harmful or toxic elements for health. Oko-tex Standard 100 certificate. Free of latex.

It also helps to take care of the environment

It perfectly adapts to articulated, hospital and geriatric beds, and does not affect to the use of side rails

High maximum load capacity. The mattress core consists of denser foam, thanks to which the mattress has a load capacity of 230 kg.



Standard measures:  
190 x 85 x 15 cm