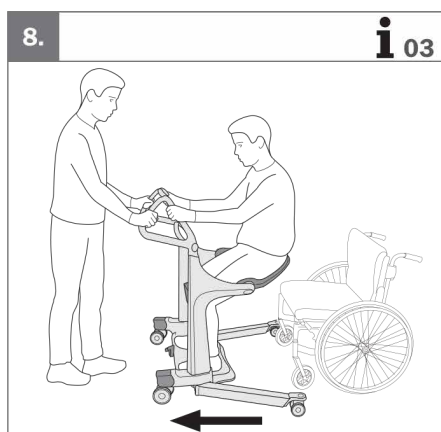
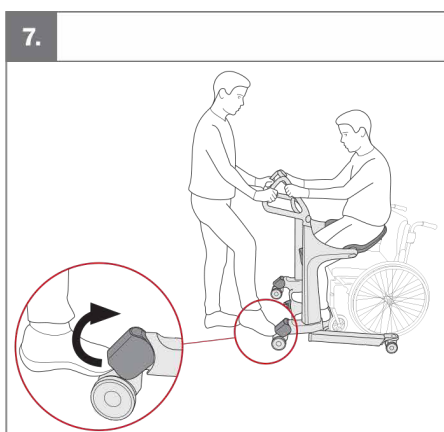
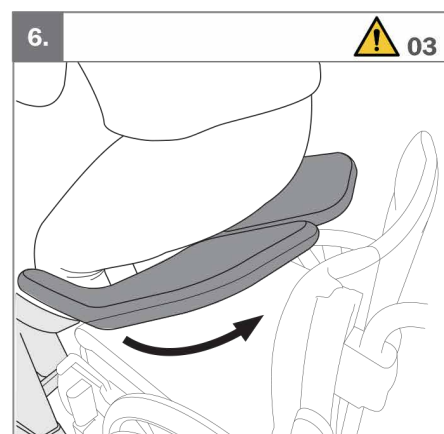
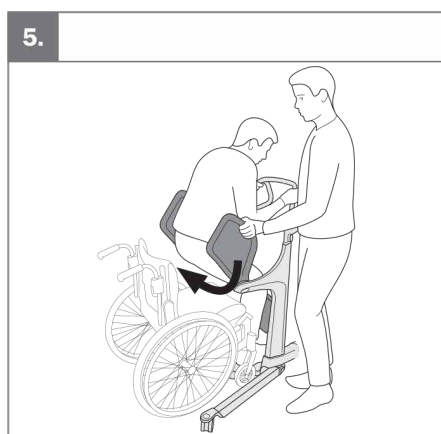
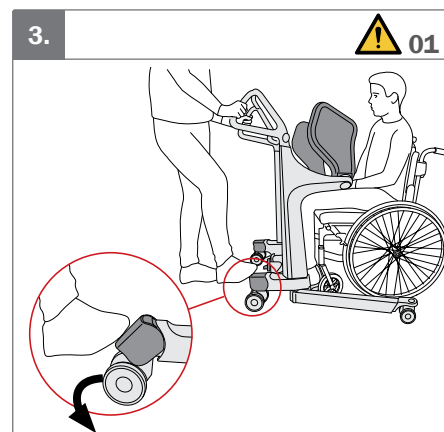
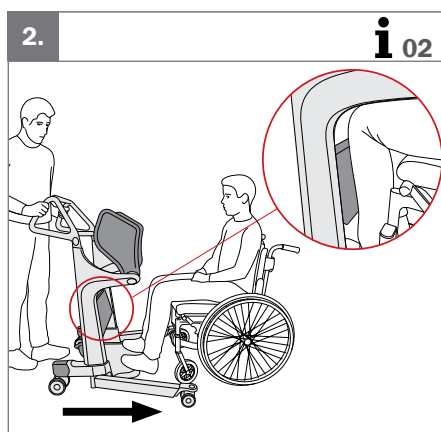
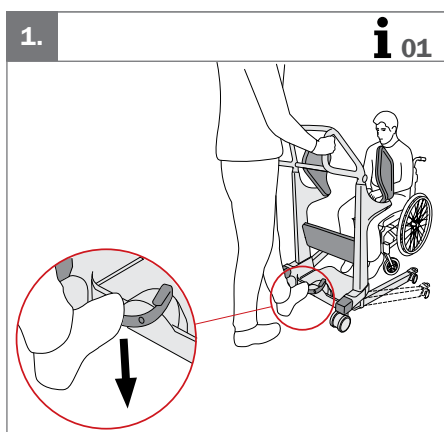


Transfer Pro

Quick guide

Denne quick guide erstatter ikke produktets brugermanual. Det er vigtigt at forstå indholdet i brugermanualen, når produktet betjenes. Du kan downloade brugermanualen på etac.dk.

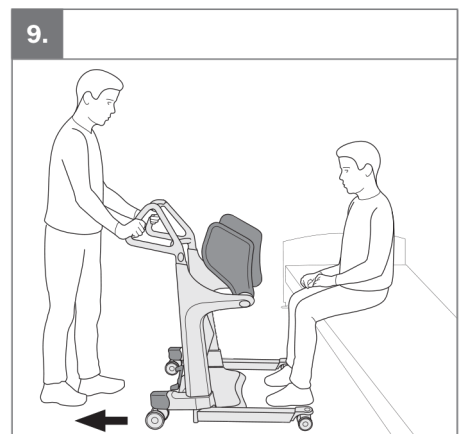
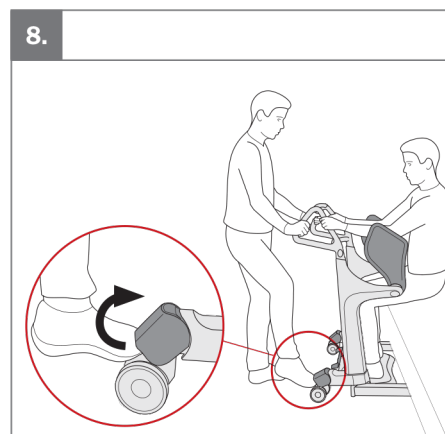
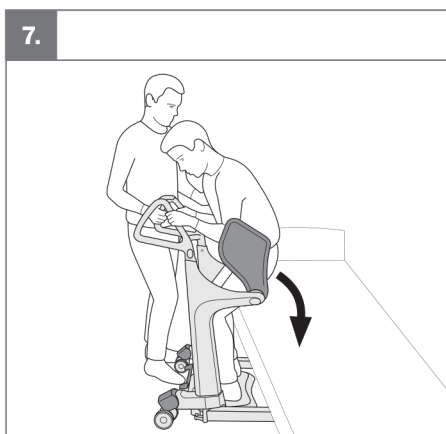
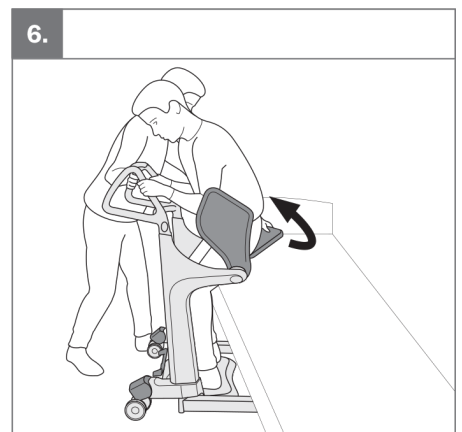
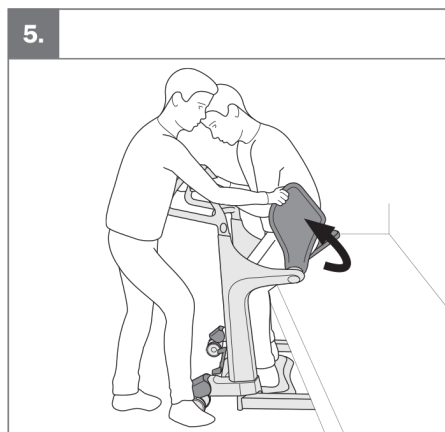
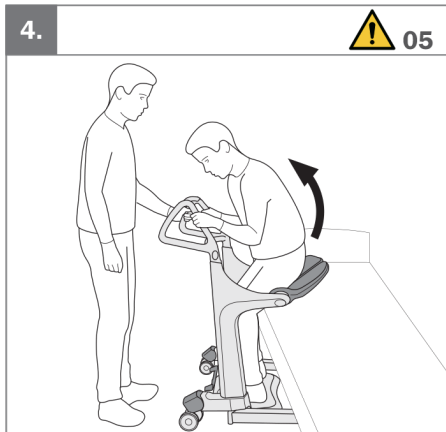
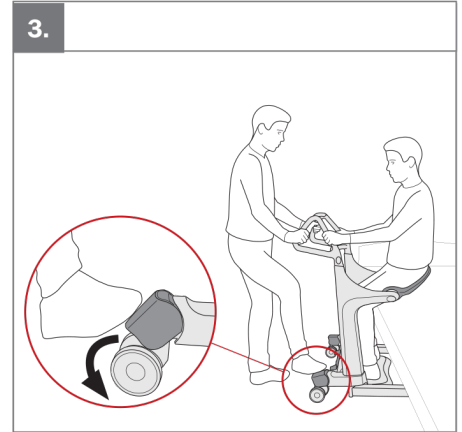
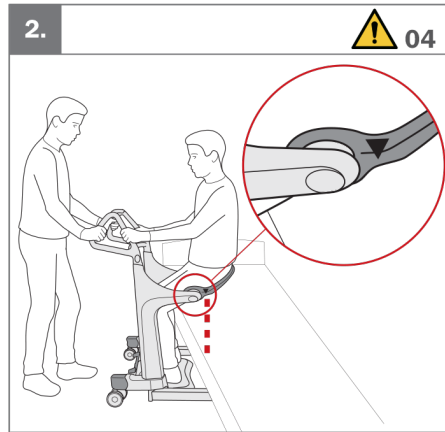
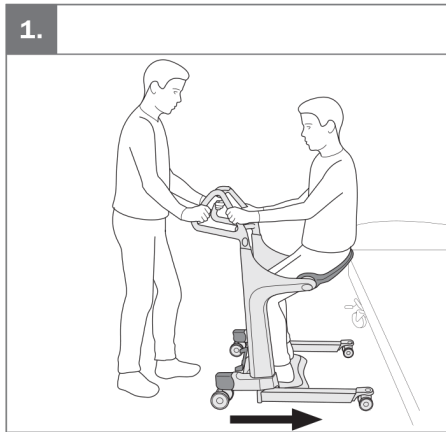


Advarsler **!**

- 01 Hjulene skal altid være låst, når brugeren bevæger sig mellem siddende og stående stilling.
- 02 Brugeren skal altid holde fast i håndtagene under forflytning.
- 03 Brugeren skal blive stående, indtil begge sædeplader er klappet ned.

Information **i**

- 01 Juster benjusteringen ved hjælp af pedalen. Til venstre: bredere. Til højre: smallere.
- 02 Placer Transfer Pro, så benstøtten når brugerens skinneben.
- 03 Det er valgfrit at flytte benene ind under forflytning.



molift®

Advarsler

- 04 Sørg for at markeringen på sædepladen som minimum flugter med sædets kant, før brugeren sætter sig.
- 05 Drej altid begge sædeplader op, før brugeren sætter sig.

Teknisk data

28,2kg / 62lbs
 max 200kg / max 440lbs
 max 200cm / min 149cm

Vaskeanvisning

 max 70 °C / 10 min
 pH min 5 / max 9