

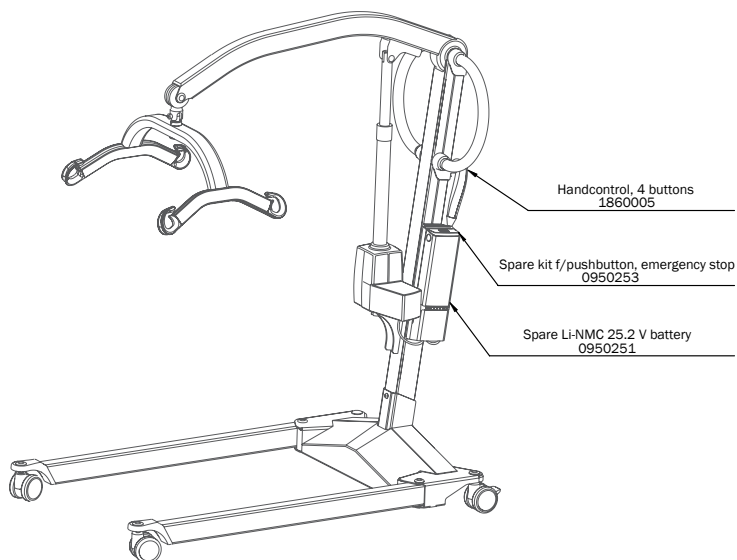


Spare part list – EN

Molift Mover 180

molift[®]
by Etac

SPL08201 - 2025-11-04 - Rev. 5.0



www.etac.com



Fig.1

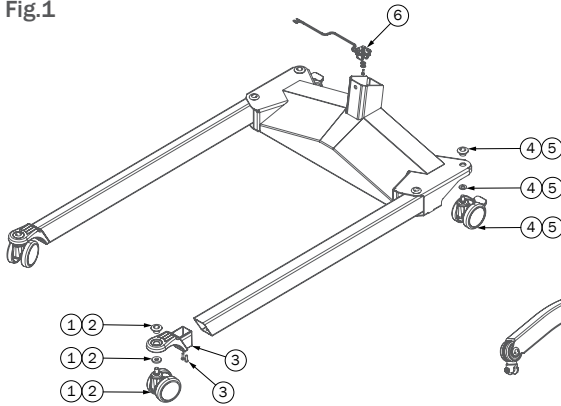


Fig.2

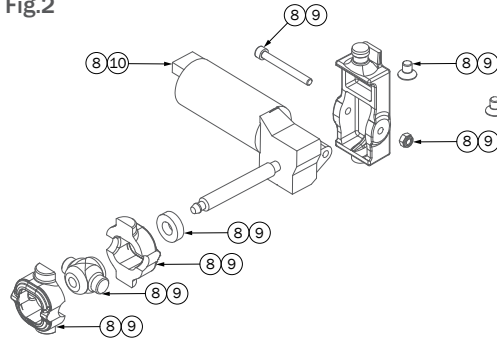


Fig.3

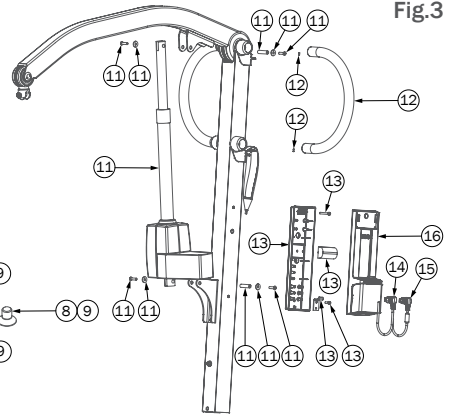


Fig.	Pos.	Title	Item no.
1	1	Front wheel ø75 kit Smart 150/Mover 180	0950201
	2	Front wheel ø100 kit Mover 180	0950207
	3	Front wheel bracket kit Mover 180	0950206
	4	Rear wheel ø75 kit w. brake	0950205
	5	Rear wheel ø100 kit w. brake	0950208
	6	Chassis contact kit Mover 180	0950245
	7	Special tool Molift Smart 150/Mover/Partner 255 (no illustration)	0920501
2	8	Leg adjust mechanism repair kit with motor	1420540
	9	Leg adjust mechanism repair kit without motor	1420530
	10	Motor for leg adjust	1320155
3	11	Actuator kit Mover 180	0950229
	12	Spare handle kit Mover 180	0950238
	13	Control box mounting kit	0950247
	14	Channel1 cable f/BLE contr.box	1860116
	15	Channel2 cable f/BLE contr.box	1860117
	16	Spare control box, BLE	0950252
	16	Spare ctrl box w/o chrg. BLE (only available for Japan)	0950252-J
17	Cable RJ50 f/handctrl. 2&4 btn (no illustration)	0950248	

Fig.4

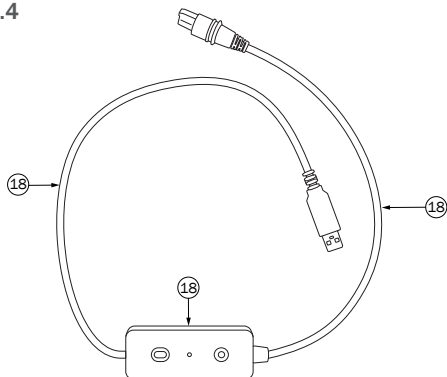


Fig.5

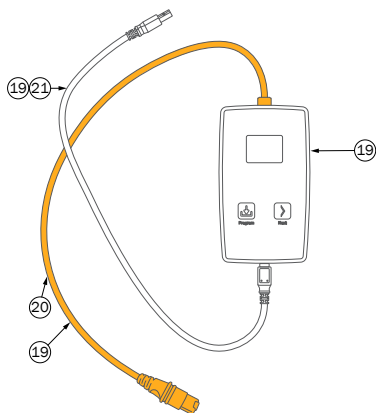


Fig.7

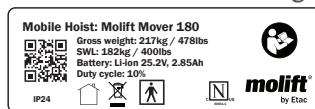


Fig.8

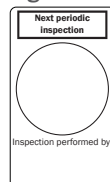


Fig.9



Fig.10



Fig.11



Fig.12

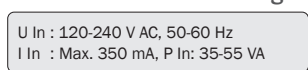


Fig.	Pos.	Title	Item no.
4	18	Cable for Molift Service Tool (USB/RJ50)	2510250
	19	Prog. box f/BLE control box (only for service technician)	0950151
	21	USB A to USB B cable 1M (only for service technician)	0950153
5	20	Spare cable f/prog. box, RJ50 (only for service technician)	0950152
	22	Spiral cable USA plug (no illustration)	2920092
	23	Spiral cable EU plug (no illustration)	2920093
	24	Spiral cable GB plug (no illustration)	2920094
	25	Spiral cable AU plug (no illustration)	2920095
7		Product label	1860111
8		Label Safety Check	1100303
9		Label Safety Check	1110306
10		Label Molift by Etac	0950128
11		Label charging instructions (not available for Japan)	0950123
12		Label elec.data f/BLE ctrl.box (not available for Japan)	0950124



Etac Ltd.

Unit 60, Hartlebury Trading Estate,
Hartlebury, Kidderminster,
Worcestershire, DY10 4JB
+44 121 561 2222



Promefa SA

Avenue de Morges 33
1027 Lonay, CH
+41 44 872 97 79



Etac A/S

Parallevej 3
DK-8751 Gedved



+45 796 858 33



patienthandling@etac.com



www.etac.com

molift[®]
by Etac