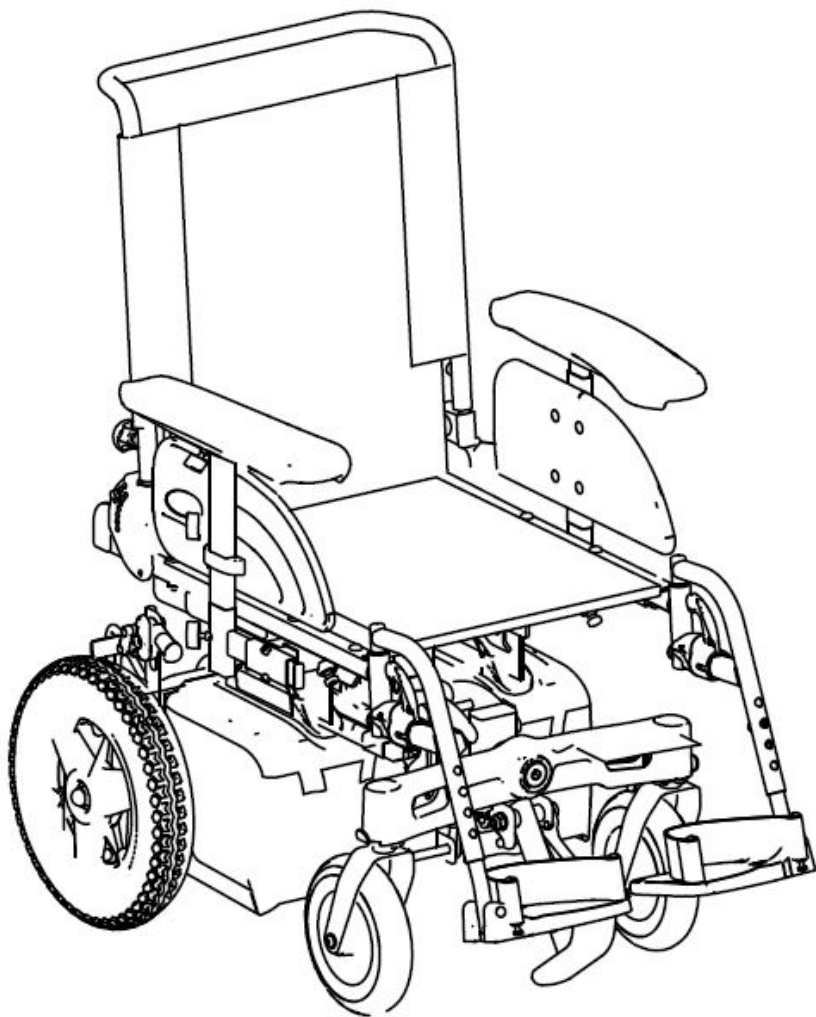


Invacare[®] Fox

SERVICE MANUAL



Edition: 1577880 Vers. 002 - 13.10.2014



These instructions contain information about:

Testing work

Repair Instructions

This manual is part of the instructions for use.

Service addresses

A	Invacare Austria GmbH	(:	+43 6232 5 53 50
	Herzog Odilostrasse 101	Fax:	+43 6232 5 53 54
	A-5310 Mondsee	@:	info@invacare-austria.com
	Austria	WWW:	www.invacare.at

B	Invacare n.v.	(:	+32 (0)50 83 10 10
	Autobaan 22	Fax:	+32 (0)50 83 10 11
L	B-8210 Loppem (Brugge)	@:	belgium@invacare.com
	Belgium	WWW:	www.invacare.be

CH	Invacare AG	(:	+41 (0)61487 70 80
	Benkenstraße 260	Fax:	+41 (0)61487 70 81
	CH-4108 Witterswil	@:	switzerland@invacare.com
	Switzerland	WWW:	www.invacare.ch

D	Invacare Aquatec GmbH	(:	+49 (0)7562 70 00
	Alemannenstraße 10	Fax:	+49 (0)7562 7 00 66
	88316 Isny	@:	info@invacare-aquatec.com
	Deutschland	WWW:	www.invacare-aquatec.de

DK	Invacare A/S	((Kundeservice):	+45 (0)36 90 00 00
	Sdr. Ringvej 37	Fax (Kundeservice):	+45 (0)36 90 00 01
	DK-2605 Brøndby	@:	denmark@invacare.com
	Danmark	WWW:	www.invacare.dk

E	Invacare® SA	(:	+34 (0)972 49 32 00
	c/ Areny s/n	Fax:	+34 (0)972 49 32 20
	Polígono Industrial de Celrà	@:	contactsp@invacare.com
	E-17460 Celrà (Girona)	WWW:	www.invacare.es
ESPAÑA			

F	Invacare® Poirier SAS	(:	+33 (0)247 62 64 66
	Route de St Roch	Fax:	+33 (0)247 42 12 24
	F-37230 Fondettes	@:	contactfr@invacare.com
	France	WWW:	www.invacare.fr

GB	Invacare® Ltd	((Customer services):	+44 (0)1656 77 62 22
	Pencoed Technology Park	Fax (Customer services):	+44 (0)1656 77 62 20
	Pencoed	@:	uk@invacare.com
	Bridgend CF35 5HZ	WWW:	www.invacare.co.uk
United Kingdom			

I	Invacare Mecc San s.r.l.	(:	+39 0445 38 00 59
	Via dei Pini, 62	Fax:	+39 0445 38 00 34
	I - 36016 Thiene (VI)	@:	italia@invacare.com
	Italia	WWW:	www.invacare.it

IE	Invacare Ireland Ltd.	(:	+353 18 10 70 84
	Unit 5 Seatown Business Campus	Fax:	+353 18 10 70 85
	Seatown Rd, Swords	@:	ireland@invacare.com
	County Dublin	WWW:	www.invacare.ie
Ireland			

N	Invacare® AS	((Kundeservice):	+47 (0)22 57 95 00
	Grensesvingen 9	Fax (Kundeservice):	+47 (0)22 57 95 01
	Postboks 6230	@:	norway@invacare.com
	Etterstad	@:	island@invacare.com
	N-0603 Oslo	WWW:	www.invacare.no
Norge			

NL	Invacare® B.V.	(:	+31 (0)318 69 57 57
	Celsiusstraat 46	Fax:	+31 (0)318 69 57 58
	NL-6716 BZ Ede	@:	nederland@invacare.com
	Nederland	@:	csede@invacare.com
		WWW:	www.invacare.nl

P	Invacare Lda	(:	+351 225 10 59 46
	Rua Estrada Velha, 949	(:	+351 225 10 59 47
	P-4465-784 Leça do Balio	Fax:	+351 225 10 57 39
	Portugal	@:	portugal@invacare.com
		WWW:	www.invacare.pt

S	Återförsäljare:	((Kundtjänst):	+46 (0)8 761 70 90
	Invacare® AB	Fax (Kundtjänst):	+46 (0)8 761 81 08
FIN	Fagerstagatan 9	@:	sweden@invacare.com
	S-163 91 Spånga	@:	finland@invacare.com
	Sverige	WWW:	www.invacare.se

Tillverkare:	MÖLNDAL	
Invacare® Deutschland GmbH	(:	+46 (0)31 86 36 00
Kleiststraße 49	Fax:	+46 (0)31 86 36 06
D-32457 Porta Westfalica	@:	ginvacare@invacare.com
Deutschland		

LANDSKRONA	
(:	+46 (0)418 2 85 40
Fax:	+46 (0)418 1 80 89
@:	linvacare@invacare.com

OSKARSHAMN	
(:	+46 (0)491 1 01 40
Fax:	+46 (0)491 1 01 80
@:	oinvacare@invacare.com

Eastern european countries	European Distributor Organisation (EDO)	(+49 (0)5731 75 45 40
	Kleiststraße 49	Fax	+49 (0)5731 75 45 41
	D-32457 Porta Westfalica	@:	edo@invacare.com
	Deutschland	WWW:	www.invacare.de

Contents

Chapter		Page
1	Introduction	8
1.1	General information	8
1.2	Notes on shipping	8
1.3	Definition and representation of information and safety information in this manual	9
1.4	Hazard symbols and symbols used.....	10
1.5	Images in this manual	11
2	Safety and fitting instructions	12
2.1	Before any inspection or repair work	12
2.2	Personal safety equipment.....	12
2.3	General safety information and information about fitting / removal.....	12
3	Tightening torques	14
4	Layout of components and componentry	15
4.1	Overview.....	15
4.2	Overview of the electronic modules.....	16
5	Service plan (1x annually)	17
6	Operational faults	19
6.1	Drive fault diagnosis	19
6.2	Shark Error codes and diagnostic codes.....	21
7	Repair work	22
7.1	Covers.....	22
7.1.1	Rear cover	22
7.1.2	Battery cover.....	23
7.2	Electronic modules.....	25
7.2.1	Replacing the power module	25
7.2.2	Replace remote	27
7.2.3	Drive program selection after component replacement.....	27
7.3	Updating the driving program	28
7.4	Batteries	29
7.4.1	Replacing batteries	29
7.4.2	Installing/removing the battery boxes	32
7.4.3	Correct handling of damaged batteries.....	33
7.5	Resetting circuit breaker.....	34

7.6	Checking the cables	34
7.7	Front wheels	35
7.7.1	Replacing front wheel	35
7.7.2	Replacing/reversing the swinging axle.....	36
7.7.3	Changing the wheelbase	38
7.7.4	Replacing the steering head bearings on the steering wheels	39
7.7.5	Installing the ball bearings	41
7.7.6	Replacing the rubber bumper	42
7.7.7	Replacing the caster locks.....	43
7.8	Drive wheels	44
7.8.1	Replacing the drive wheels (wheel size 12½ x 2¼").....	44
7.8.2	Replacing the drive wheels (wheel size 12½ PS).....	46
7.9	Anti-tipper wheels	47
7.10	Replacing the parking brake	48
7.11	Drive unit	49
7.11.1	Replacing the motor/transmission unit Shark/VR2.....	49
7.12	Seat system	51
7.12.1	Moving the seat into the service position	51
7.12.2	Replacing the seat frame.....	53
7.12.3	Replacing the fabric seat (padded).....	55
7.12.4	Replacing the fabric seat (stretched).....	56
7.12.5	Replacing the seat plate	59
7.12.6	Replacing the safety latch.....	60
7.12.7	Adjusting the safety latch	60
7.13	Backrest unit	61
7.13.1	Replacing the standard backrest	61
7.13.2	Replacing a standard backrest with quick release.....	62
7.14	Armrest	64
7.14.1	Replacing the armrest.....	64
7.14.2	Replacing the holder.....	65
7.15	Replacing the foot plate/heel strap of the legrest	66
8	Installing accessories	67
8.1	Replacing the holding strap	67
8.2	Curb climber	68
8.2.1	Replacing the positioning shoe	68
8.2.2	Replacing the curb climber	69
8.3	Further accessories	70

9	Adjusting the seating position	71
9.1	Adjusting the lower leg length and seat depth.....	72
9.1.1	Adjusting the lower leg length	72
9.1.2	Adjusting the seat depth	72
9.1.2.1	Adjusting the seat depth via the backrest unit (fabric seat padded)	73
9.1.2.2	Adjusting the seat depth via the backrest unit (fabric seat stretched)	74
9.2	Adjusting the seat height.....	75
9.2.1	Adjusting seat height above centre column	75
9.2.2	Adjusting seat height above seat support.....	75
9.3	Adjusting the seat tilt	76
9.4	Adjusting the center of gravity of the seat.....	76

1 Introduction

1.1 General information

- Service and maintenance work must be carried out taking this service manual into account.
- It is imperative that you observe safety information.
- Information about operation or about general maintenance and care work on the mobility aid should be taken from the operating manual.
- You can find information about ordering spare parts in the spare parts catalogue.
- Only use original Invacare® spare parts. The guarantee will become invalid if other spare parts are used!
- We reserve the right to make any alterations on the grounds of technical improvements.
- The mobility aid may only be maintained and overhauled by qualified personnel.
- The minimum requirement for service technicians is suitable training, such as in the cycle or orthopaedic mechanics fields, or sufficiently long-term job experience.
 - Experience in the use of electrical measuring equipment (multimeters) is also a requirement.
 - Special Invacare® training is recommended.
- Alterations to the mobility aid which occur as a result of incorrectly or improperly executed maintenance or overhaul work lead to the exclusion of all liability on the side of INVACARE.
- If you have any problems or questions please contact Invacare® Service.

1.2 Notes on shipping

- If the mobility aid has to be shipped back to the manufacturer for major repairs, you should always use the original packaging for transport.
- Please attach a precise description of the fault.

1.3 Definition and representation of information and safety information in this manual

Different types of information and signal words are used throughout this manual.



HAZARD!

The signal word "HAZARD!" refers to immediate hazards.

- *The following lines in italics refer to actions which serve to avoid such hazards.*
-



WARNING!

The signal word "WARNING!" refers to possibly-occurring hazards which can lead to death or serious injuries if they are not avoided.

- *The following lines in italics refer to actions which serve to avoid such hazards.*
-



ATTENTION!

The signal word "ATTENTION!" refers to possibly-occurring hazards which can lead to minor injuries and/or material damage if they are not avoided.

- *The following lines in italics refer to actions which serve to avoid such hazards.*
-



CAUTION!

The signal word "CAUTION!" refers to hazards which could lead to material damage if they are not avoided.

- *The following lines in italics refer to actions which serve to avoid such hazards.*
-



Note

The signal word "Note" is used to denote general information which simplifies the handling of your product and refers to special functions.

1.4 Hazard symbols and symbols used

Different types of hazard symbols and symbols are used throughout this manual.



General hazards

This symbol warns you of general hazards!

- Always follow the instructions to avoid injury to the user or damage to the product!



BURN HAZARD!

This symbol warns you of the danger of chemical burns, for example due to the discharge of battery acids!

- Always follow the instructions to avoid injury to the user or damage to the product!



DANGER OF CRUSHING!

This symbol warns you of crushing hazards due to inattentive working with heavy components.

- Always follow the instructions to avoid injury to the user or damage to the product!



EXPLOSION HAZARD!

This symbol warns you of an explosion hazard, which can be caused by excessive tyre pressure in a pneumatic tyre.

- Always follow the instructions to avoid injury to the user or damage to the product!



Wear safety shoes

The symbol refers to the requirement for wearing safety shoes.

- Wear standardised safety shoes during all work.



Wear eye protection

This symbol refers to the requirement for wearing eye protection, for example when working with batteries.

- Wear eye protection when this symbol is shown.



Wear safety gloves

This symbol refers to the requirement for wearing safety gloves, for example when working with batteries.

- Wear safety gloves when this symbol is shown.



Note

This symbol identifies general information which is intended to simplify working with your product and which refers to special functions.



Requirements:

- This symbol identifies a list of various tools, components and items which you will need in order to carry out certain work. Please do not attempt to carry out the work if you do not have the listed tools available.



Always dispose used or damaged batteries correctly

The symbol refers to information for the correct disposal of used or damaged batteries.

1.5 Images in this manual

The detailed images in this manual are given digits to identify various components. Component numbers in text and operational instructions always relate to the image directly above.

2 Safety and fitting instructions

These safety instructions are intended to prevent accidents at work, and it is imperative that they are observed.

2.1 Before any inspection or repair work

- Read and observe this repair manual and the associated operating manual!
- Observe the minimum requirements for carrying out the work (see chapter entitled " General information)!

2.2 Personal safety equipment



Safety shoes

The mobility device, and some of its components, are very heavy. These parts can result in injuries to the feet if they are allowed to drop.

- *Wear standardised safety shoes during all work.*



Eye protection

It is possible that battery acid can be discharged when working on defective batteries or when handling batteries improperly.

- *Always wear eye protection when working on any defective or possibly defective batteries.*



Safety gloves

It is possible that battery acid can be discharged when working on defective batteries or when handling batteries improperly.

- *Always wear acid-proof safety gloves when working on any defective or possibly defective batteries.*

2.3 General safety information and information about fitting / removal



WARNING: Danger of crushing!

Various components such as the drive unit, batteries, seat etc are very heavy. This results in injury hazards to your hands!

- *Please note the high weight of some components! This applies especially to the removal of drive units, batteries and the seat.*



WARNING!

Injury hazard if the vehicle starts moving unintentionally during repair work!

- *Switch the power supply off (ON/OFF key)!*
- *Engage the drive!*
- *Before jacking up, secure the vehicle by using chocks to block the wheels.*



ATTENTION!

Fire and burn hazard due to electrical short-circuit!

- *The mobility device must be completely switched off before removal of voltage-carrying components! To do this, remove the batteries.*
- *Avoid short-circuiting the contacts when carrying out measurements on voltage-carrying components!*

**CAUTION!****Danger of burns from hot surfaces on the motor!**

- *Allow the motors to cool down before commencing work on them.*

**ATTENTION!****Injury hazard and danger of damage to vehicle due to improper or incomplete maintenance work!**

- *Use only undamaged tools in good condition.*
- *Some moving parts are mounted in sockets with PTFE coating (Teflon™). Never grease these sockets!*
- *Never use "normal" nuts instead of self-locking nuts.*
- *Always use correctly-dimensioned washers and spacers*
- *When reassembling, always replace any cable ties which were cut during dismantling.*
- *After completing your work / before renewed start-up of the mobility device, check all connections for tight fitting.*
- *After completing your work / before renewed start-up of the mobility device, check all parts for correct locking.*
- *Only operate the vehicle with the approved tyre pressures (see technical data).*
- *Check all electrical components for correct function. Please note that incorrect polarity can result in damage to the electronics.*
- *Always carry out a trial run at the end of your work.*

**CAUTION!****Danger of injury and damage to property, if the maximum speed reduction on a wheelchair with a lifter does not function correctly!****The wheelchair's control unit must reduce the maximum possible speed as soon as the lifter is raised.**

- *Test the maximum speed reduction for correct function after any maintenance work or modifications to the wheelchair.*

**Note**

Mark all current settings for the mobility aid (seat, armrests, backrest etc.), and the associated cable connecting plugs, before dismantling. This makes reassembly easier. All plugs are fitted with mechanical safety devices which prevent release of the connecting plugs during operation. To release the connecting plugs the safety devices must be pressed in. When reassembling ensure that these safety devices are correctly engaged.

**CAUTION!****Any changes to the drive program can affect the driving characteristics and the tipping stability of the vehicle!**

- *Changes to the drive program may only be carried out by trained Invacare® specialist dealers!*
- *Invacare® supplies all mobility aids with a standard drive program ex-works. Invacare® can only give a warranty for safe vehicle driving behaviour - especially tipping stability - for this standard drive program!*

3 Tightening torques

The tightening torques stated in the following list are based on the thread diameter for the nuts and bolts for which no specific values have been determined. All values assume dry and de-greased threads.

Thread	M4	M5	M6	M8	M10	M12	M14	M16
Tightening torque in Nm $\pm 10\%$	3 Nm	6 Nm	10 Nm	25 Nm	49 Nm	80 Nm	120 Nm	180 Nm

**CAUTION!**

Damage can be caused to the mobility device due to improperly tightened screws, nuts or plastic connections.

- *Always tighten screws, nuts etc to the stated tightening torque.*
- *Only tighten screws or nuts which are not listed here fingertight.*

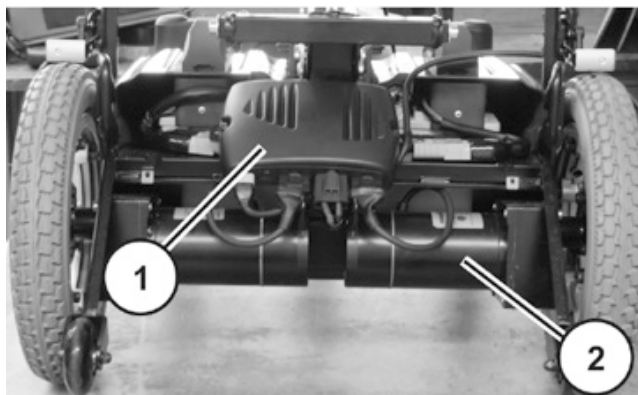
4 Layout of components and componentry

4.1 Overview

Under the rear cover:

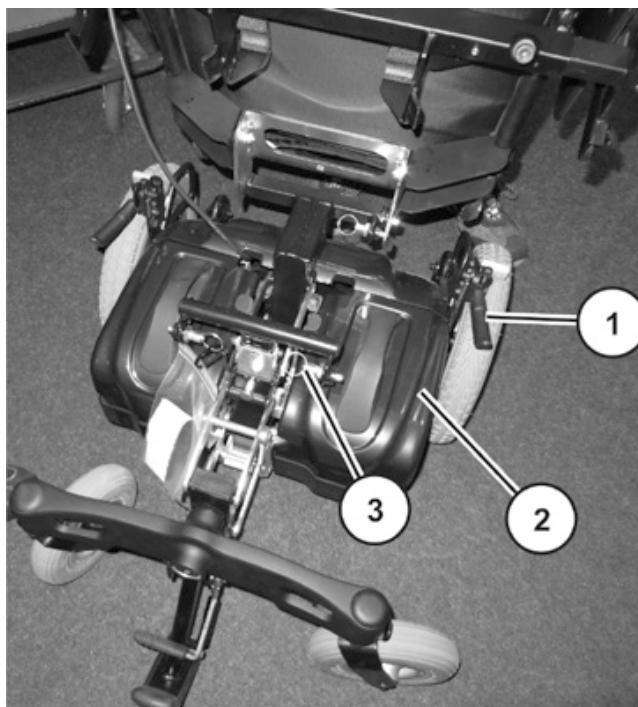
- 1) Power module
- 2) Drive unit

The electronic modules used are described in chapter 4.2.



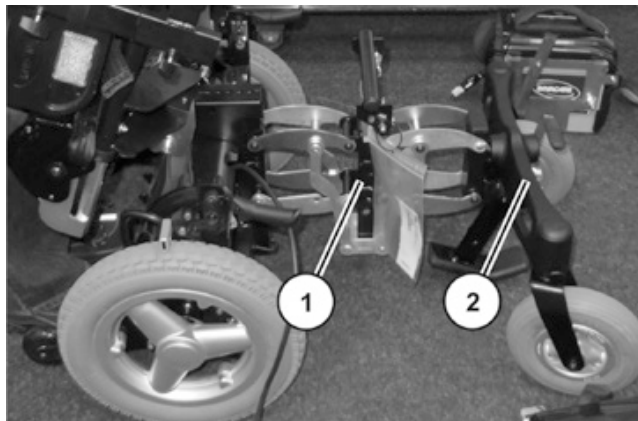
Under the seat:

- 1) Parking brake
- 2) Battery boxes
- 3) Safety latches for the seat



Special features:

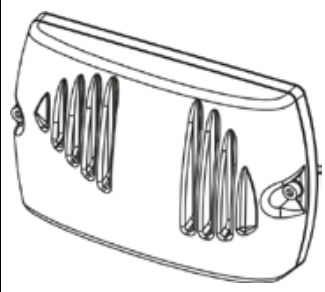
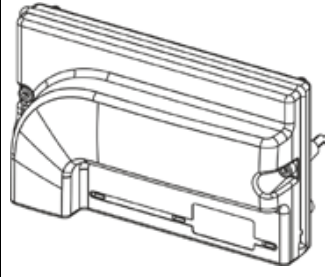
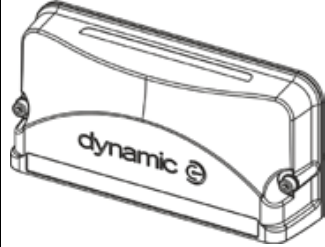
- 1) Scissor system, please refer to user manual.
- 2) Swinging axle, please refer to chapter 7.7.2.



4.2 Overview of the electronic modules

Different electronic modules can be fitted to the mobility aid.

Before you connect mobility aid components such as actuators or motors, please begin by ascertaining which module is installed. Please refer to the following table for an overview of the modules.

Power modules	Designation	Joystick boxes	Notes
	ACS Shark DK-PMB01	Shark II remote	Battery cable Shark / DX2
	VR2 R-Net EL PM90	R-Net remote	Battery cable VR2
	LiNX UniShark	Shark II remote	Battery cable Shark / DX

5 Service plan (1x annually)

Component	Check	Remedy	Notes	Ü
Armrests	· Damage to armrests	· Replace covering if damaged		
	· Armrest fixings	· Tighten screws		
Side panels	· Damage to side panels	· Replace side panels if damaged		
	· Side panel fixings	· Tighten screws		
Seat lock	· Seat lock defective	· Replace seat lock		
Seat angle adjustment	· Tight seating of SL fuses	· Replace SL fuses if necessary		
Frames (chassis) / battery mounting	· Check fixings, welded seams and battery mounting	· Tighten screws · Replace components if necessary		
Wheel suspension and wheels	· Check drive wheels for tight fit and side play		See chapter 7.8.	
	· Check steering wheels for tight fit, float and side play	· Replace wheels, wheel fork or wheel bearings	See chapter 7.7	
Swinging axle	· Check caster locks	· Replace caster locks	See chapter 7.7.4	
	· Check swinging axle for damage	· Replace swinging axle	See chapter 7.7.2	
Drive units, coupling mechanism	· Check functions in drive and push modes · Check coupling mechanism	· Replace motor if necessary. · Tighten screws/nuts, adjust or replace if necessary		
Legrests	· Check welded seams, interlocking, screws, footplates	· Tighten, replace if necessary		
Batteries	· Check batteries for damage	· Replace batteries if necessary	See chapter 7.4.	
	· Check battery voltage	· Charge batteries	See operating manual	
	· Check contacts and terminals	· Clean contacts and terminals	Please refer to the safety information in chapter 7.4 for handling batteries	

Component	Check	Remedy	Notes	Ü
Remote / electronic module	<ul style="list-style-type: none"> · Remote, status display blinking 	<ul style="list-style-type: none"> · Evaluate error/blink code 		
	<ul style="list-style-type: none"> · Fixings 	<ul style="list-style-type: none"> · Tighten fixings, replace if necessary 		
	<ul style="list-style-type: none"> · Cables and connecting plugs 	<ul style="list-style-type: none"> · Tighten cables and connecting plugs, replace if necessary 		
	<ul style="list-style-type: none"> · Drive lever function 	<ul style="list-style-type: none"> · Replace drive lever if necessary · Replace remote if necessary 		
	<ul style="list-style-type: none"> · Power supply 	<ul style="list-style-type: none"> · Tighten cables and connecting plugs, replace if necessary 		
Drive program	<ul style="list-style-type: none"> · Check drive electronics program version 	<ul style="list-style-type: none"> · Update software if newer version available. 	See chapter 7.3.	

6 Operational faults

Different power modules can be installed in the mobility aid in connection with different remotes. The rectification of operational faults depends on the installed power module in each case.

The power modules used are described in 4.2.



Note

The tables for rectification of operational faults listed in the following chapters are only an excerpt from the original manufacturer's manuals.

You can obtain the original manuals from Invacare®.

If you have problems with the mobility aid, please proceed as follows:

- First assess the possible cause of the problem using the following table.
- Check the remote status display. Evaluate the error code.
- Carry out the necessary checks and repairs as recommended in the following table.

6.1 Drive fault diagnosis

PROBLEM	OTHER SYMPTOMS	POSSIBLE CAUSE	SOLUTION	DOCUMENTATION
Mobility device will not start	The remote status display illuminates normally and does not show an error code.	Drive motors disengaged	Engage drive motors	See operating manual
	Remote status display does not illuminate	Batteries defective	Replace batteries	See chapter 7.4.
		Completely discharge battery	Pre-charge batteries	See operating manual
		Power supply to remote interrupted	Reset circuit breaker	See chapter 7.5.
			Check cables between the modules for loose connections and damage	See chapter 7.6.
		Remote defective	Replace remote	See chapter 7.2.2.
	Remote status display blinking	Various causes	Assess error code	See chapter 6.2.

PROBLEM	OTHER SYMPTOMS	POSSIBLE CAUSE	SOLUTION	DOCUMENTATION
Mobility device judders in drive mode	None	Batteries defective (unstable voltage)	Replace batteries	See chapter 7.4.
		Drive motor(s) defective	Replace motor(s)	See chapter 7.11.1.
Batteries not being charged	None	Batteries defective	Replace batteries	See chapter 7.4.
	LEDs blinking on charging unit	Charging unit defective	Replace charging unit	See charging unit user manual
Mobility device runs too slowly	None	Remote defective	Replace remote	See chapter 7.2.2.
		Batteries defective	Replace batteries	See chapter 7.4.

6.2 Shark Error codes and diagnostic codes

The drive electronics can automatically rectify some faults. In this case the status display will stop blinking. Switch the remote on and off again several times. Wait around 5 seconds each time before switching the remote on again. If this does not rectify the fault, determine the cause using the following link codes:

Blink Code	Meaning	Solution	Documentation
1	Operating error	Set drive lever to neutral central position (just release drive lever) and switch on again	
2	Battery error	Check battery and mains cable	See chapter 7.6
		Charge batteries. If you switch the mobility device off for a few minutes, the batteries can often charge themselves up enough to enable a short journey. You should, however, only use this solution in emergency situations because it results in excessive battery discharging.	See user manual
		Replace batteries	See chapter 7.4.1.
3	Fault on left-hand motor (M2)	Check motor cable and connecting plug. Check motor.	See chapters 7.6 and 7.11.1
4	Fault on right-hand motor (M1)	Check motor cable and connecting plug. Check motor.	See chapters 7.6 and 7.11.1
5	Fault at left-hand (M2) motor brake	Check cable and plug.	See chapter 7.6.
6	Fault right-hand (M1) motor brake	Check cable and plug.	See chapter 7.6.
7	Error in Shark remote	Check bus cable in remote and connecting plug. Replace remote.	See chapter 7.6. and 7.2.2
8	Error in Shark power module	Check all the cables and plugs in the Shark system. Replace electronics module	See chapters 7.6 and 7.2.1
9	Communication error in Shark system	Check all cables and connecting plugs in the Shark system. Replace remote.	See chapters 7.6 and 7.2.2
10	Unknown error	Check all cables and connecting plugs.	See chapter 7.6.
11	Incompatible remote	The wrong remote has been connected. Ensure that electronic module code and the remote code match.	See chapter 7.2.2 and chapter 7.2.1.

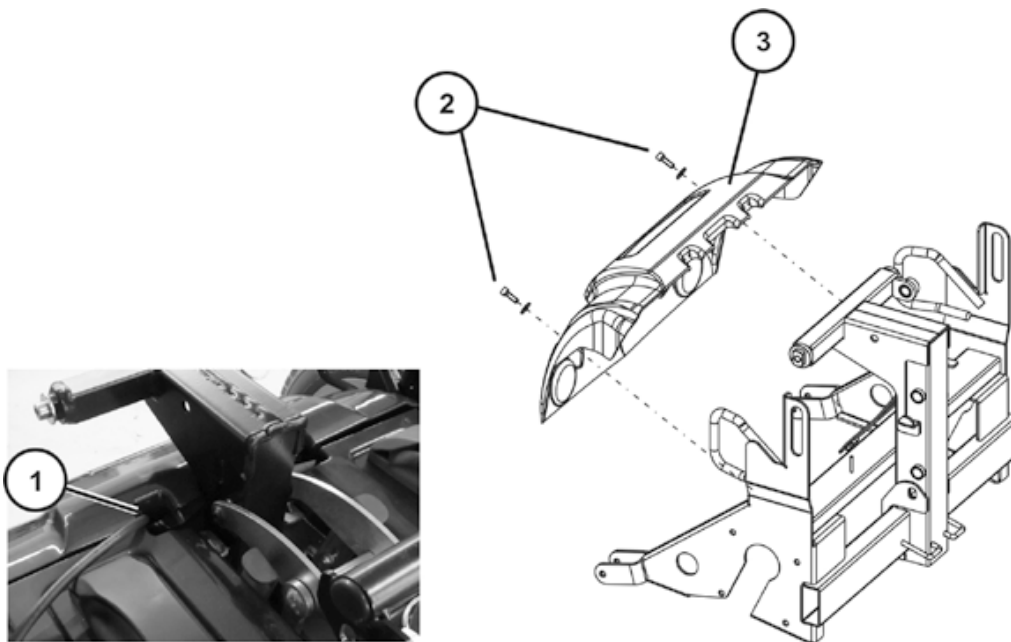
7 Repair work

7.1 Covers

7.1.1 Rear cover


Requirements:

- 3 mm Allen key
- oblique pliers
- cable binder


Removing the rear cover:

- Loosen the cable tie from the bus cable in the indentation (1) right or left.
- Loosen and remove the two Allen screws (2) including washer on the left and right of the rear cover (3).
- Pull the rear cover carefully forwards away from the chassis.

Assembling the rear cover:

- Push the rear cover over the chassis.
Ensure that the bus cable is located in the indentation (1).
- Fasten the Allen screws (2) including washer.
- Tighten the Allen screws to 3 Nm +/- 1 N.
- Fix the bus cable using a cable tie.

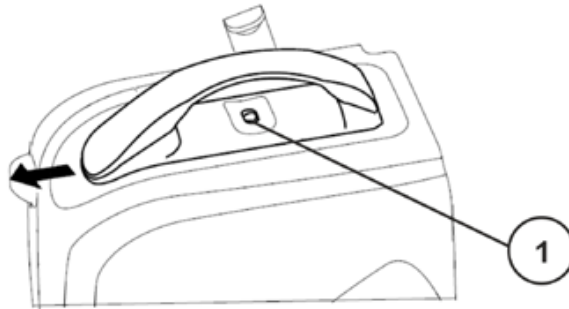
7.1.2 Battery cover



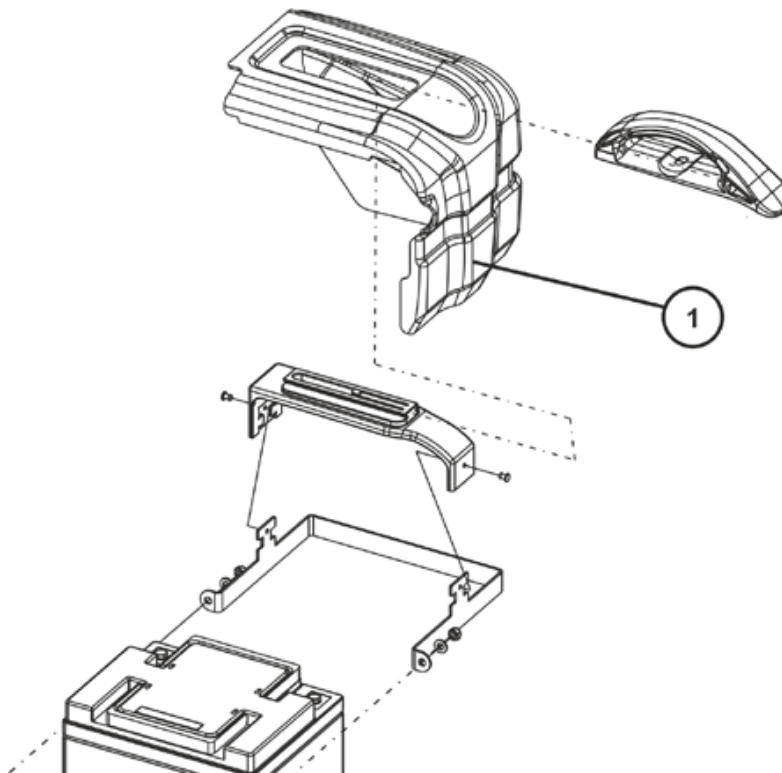
Requirements:

- 5 mm Allen key

Removing the battery cover:



- On top of the battery box, press the safety latch (1) and remove the handle.



- Remove the battery cover (1) of the battery box.

Assembling the battery cover:

- Refit the battery cover.
- Refit the handle to the cover. Ensure that the safety interlock engages.
- Insert the battery pack.

7.2 Electronic modules

7.2.1 Replacing the power module

**Note**

When replacing the power module in connection with a remote, please take the final selection of the drive program into account as described in chapter 7.2.3.

Different power modules in connection with different remotes can be fitted to the mobility aid. The possible power modules are described in chapter 4.2.

**CAUTION!**

Any changes to the drive program can affect the driving characteristics and the tipping stability of the mobility aid!

- *Changes to the drive program may only be carried out by trained Invacare® specialist dealers!*
- *Invacare® can only give a warranty for safe mobility aid driving behaviour - especially tipping stability - for unaltered standard drive programs!*

**Note**

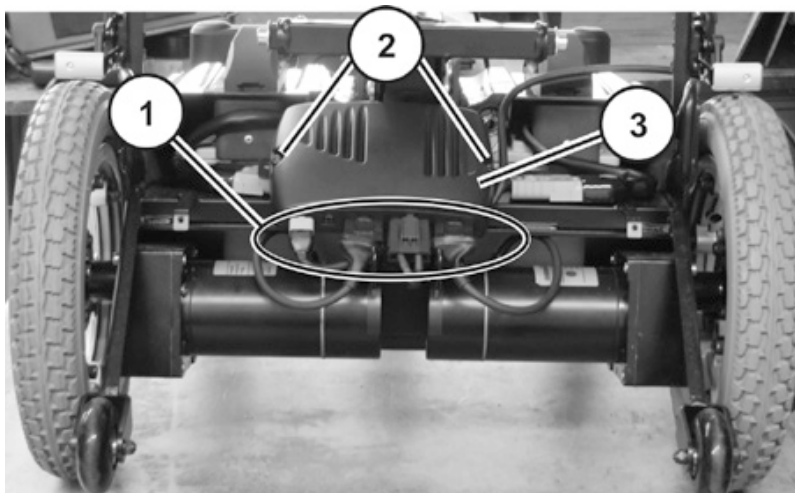
All power modules are delivered with a standard drive program. If you have made any customer-specific modifications to the drive program, these must be adapted after the installation of the new power module.

**Requirements:**

- 8 mm socket spanner
- To adapt the drive program:
programming software or hand programming device and system installation manual, available from Invacare®.

Removing the power module:

- Switch the electronics OFF on the remote.
- Remove the rear cover, as described in chapter 7.1.1.
- Take exact note of the positions of all cables and the sockets that they are connected to. Mark the connectors and sockets or take a photograph with a digital camera.



- Disconnect the plugs (1) from the power module (3).
- Use the 8 mm socket wrench to loosen both nuts (2).
- Pull the power module towards the rear and off of the guides.
- Replace the power module.

Installing the power module:

- Assemble the parts in reverse order.
- Reconnect all cable connectors to their former positions.
- Plug all free slots with a suitable rubber stopper.
- Select the driving program, as described in chapter 7.2.3.
- Update the driving program if a new software version is available, as described in chapter 7.3.
- Modify the driving program using the programming software as needed.
- The last step is to test all functions of the vehicle.

7.2.2 Replace remote



Note

Replacing the remote is very easy and is not described in detail.

However, when replacing a remote in connection with the power module, please take the final selection of the drive program into account as described in chapter 7.2.3.

7.2.3 Drive program selection after component replacement

The drive program is saved in the remote and in the power module. If one of these two components is replaced, the system must be told which of the components has not been replaced so that it knows which contains the current controller profile.



Note

The system allows normal usage of the mobility aid after component replacement only if the profile is selected afterwards.

7.3 Updating the driving program

The driving programs for electric wheelchairs are continually updated and improved by Invacare®. For this reason, you should check whether the version number is still up to date each time a wheelchair comes in for repairs, and also during regular inspections.

If a newer version is available, the driving program must be updated. The procedure for updating the driving program is described in the user manual of the Wizard software.

**Note**

The electronic system is supplied with a standard drive program. If the driving program has been customised, you have to perform this customisation again, after installing the new driving program. This also applies to the customer-specific options of the seat setting for ACS 2 remotes, which are activated ex works.

**WARNING: Every alteration to the drive program can influence vehicle handling and the tipping stability of the wheelchair!**

- *Alterations to the drive program must only be carried out by trained Invacare®-dealers!*
 - *Invacare® can only assume a warranty for the safe vehicle handling of the wheelchair – in particular tipping stability - for unaltered standard drive programs!*
-

**Pre-requisites:**

- Dynamic® Wizard software
 - User manual for the Wizard software
 - For further information on other requirements - such as the minimum system configuration of the PC to be used for programming, necessary programming cables - see the user manual of the Wizard software. You find the latest version of the user manual in the download area on <http://www.dynamiccontrols.com/>.
-

**Note**

When an electrical adjustment option is retrofitted, such as electrical legrests, then this option needs to be activated in the driving program as well if you have an ACS 2 remote. For more information, refer to the user manual of the Wizard software and the installation instructions for the electronic modules

7.4 Batteries

7.4.1 Replacing batteries



ATTENTION:
Injury hazard and possible material damages if batteries are handled improperly!

- *The installation of new batteries may only be carried out by authorised specialists.*
 - *Observe the warning information on the batteries.*
 - *Only use battery versions stated in the specifications.*
-



ATTENTION:
Fire and burns hazard if battery terminal is bypassed!

- *Please take great care to ensure that the battery terminals are never short-circuited with tools or mechanical mobility device parts!*
 - *Ensure that the battery terminal caps have been replaced if you are not working on the battery terminals.*
-



ATTENTION: Danger of crushing!
The batteries are extremely heavy. This results in injury hazards to your hands.

- *Bear in mind that the batteries are sometimes very heavy!*
 - *Please handle the batteries with care.*
-



WARNING: BURN HAZARD!
Injury hazard due to discharged acid.

- *Always wear acid-proof protective gloves when handling batteries.*
- *Always wear protective goggles when handling batteries.*


What to do if acid is discharged:

- *Always take clothing which has been soiled by or dipped in acid off immediately!*
- *Rinse any areas of your skin which has come into contact with battery acid off immediately with plenty of water!*

If contact with eyes is made:

- *Rinse the affected eye under running water for several minutes! You should also consult an eye specialist immediately afterwards!*
-

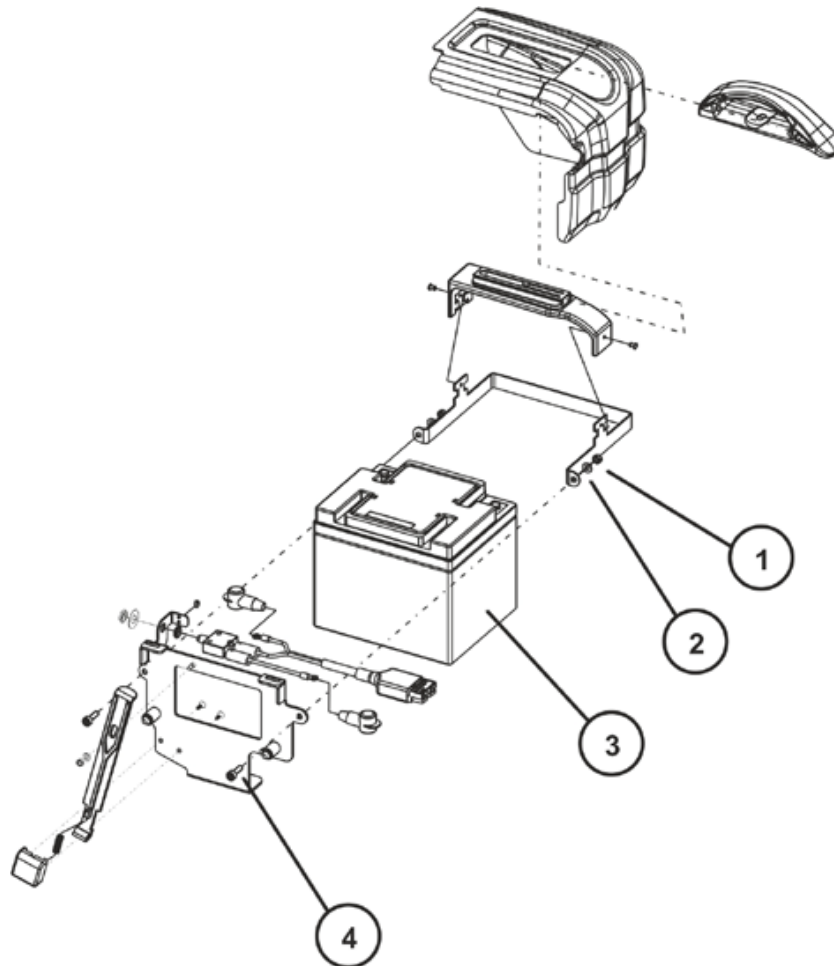


Requirements:

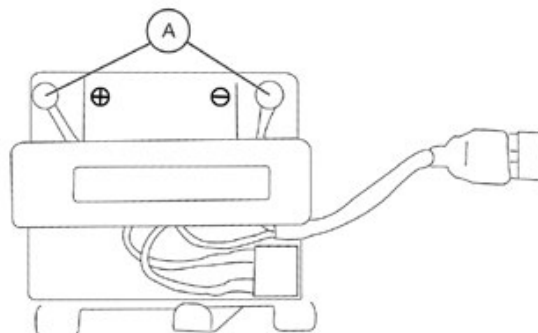
- 5 mm Allen key
 - 10 mm open-ended spanner
 - depending on the battery type additionally:
 - 10 mm open-ended spanner (32 Ah and 50 Ah battery)
 - 11 mm open-ended spanner (40 Ah battery)
-

Uninstalling the batteries:

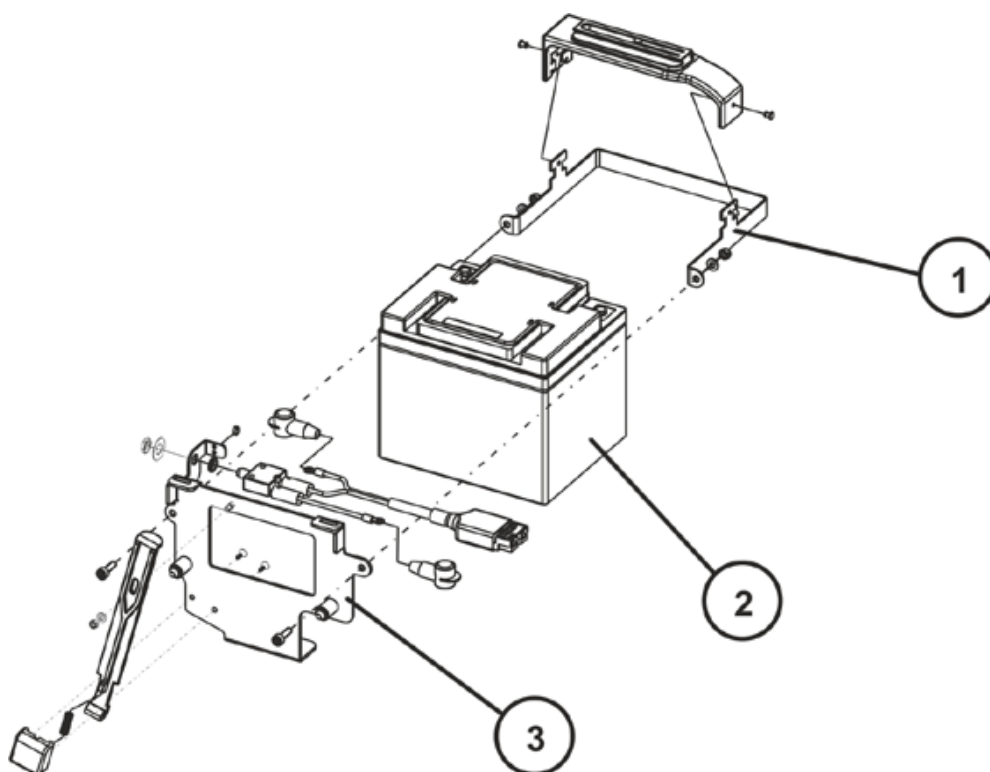
- Switch the electronics OFF on the remote.
- Bring the seat into the service position, as described in chapter 7.12.1.
- Remove the battery boxes, as described in chapter 7.4.2.
- Remove the the handle and cover (1) of the battery box, as described in chapter 7.12.1.



- Loosen and remove the Allen screw (4), including washer (2) and nut (1) with a 5 mm Allen key on both sides of the battery (2).

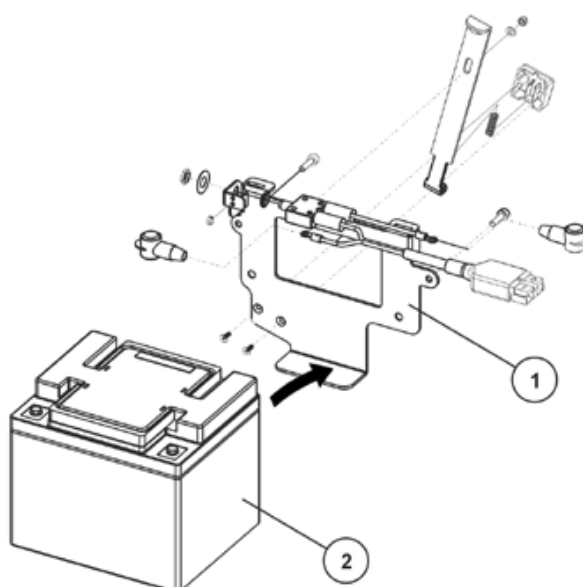


- Disconnect the cable harness from the battery by removing the pole screws and nuts (A) with a 10 mm open-end wrench.

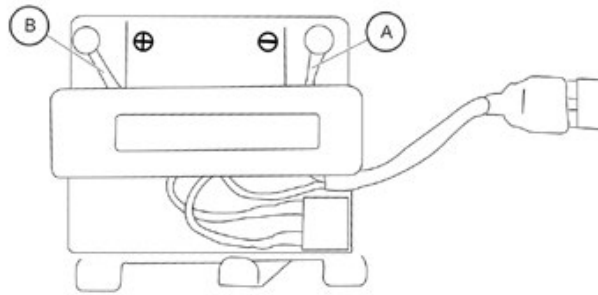


- Remove the mounting bracket (1) and (3) together with the cable harness from the battery (2).
- Repeat the previous steps for the other battery.

Installing the batteries:



- Set the new battery (2) on the plate of the mounting bracket (1).
- Reinstall the mounting bracket and secure with the screws and nuts.



- Connect the cable harness to the battery.

**Note**

- (-) RED Cable **(A)** to the batterie terminal (-)
- (+) BLUE Cable **(B)** o the batterie terminal (+).

- Reinstall the cover of the battery box, as described in chapter 7.1.2.
- Reinstall the the batterie box, as described in chapter 7.4.2.
- Place the seat vertically onto its holder again.
- Fold the seat forward.
- Make sure that the safety latches engage on the center post.
- Check all functions of the vehicle and go for a test drive.

7.4.2 Installing/removing the battery boxes

The installation of the battery boxes in the vehicle is described in the user manual.

7.4.3 Correct handling of damaged batteries



WARNING: BURN HAZARD!**Injury hazard due to discharged acid.**

- Always wear acid-proof protective gloves when handling batteries.
- Always wear protective goggles when handling batteries.

**What to do if acid is discharged:**

- Always take clothing which has been soiled by or dipped in acid off immediately!
- Rinse any areas of your skin which has come into contact with battery acid off immediately with plenty of water!

If contact with eyes is made:

- Rinse the affected eye under running water for several minutes! You should also consult an eye specialist immediately afterwards!
-

**Requirements:**

- protective goggles
 - acid-proof gloves
 - acid-proof transport container
-

- If handling damaged batteries, always wear suitable protective clothing.
 - Always deposit damaged batteries in suitable acid-proof containers immediately after removal.
 - Only transport damaged batteries in suitable acid-proof containers.
 - Always wash any objects which were contacted by acid in plenty of fresh water.
-

**Always dispose of used or damaged batteries correctly**

Used and damaged batteries will be taken back by your medical equipment supplier or Invacare®.

7.5 Resetting circuit breaker

If the mobility device cannot be switched on, check whether the safety cutout has triggered. The safety cutout is reset by pressing the knob inwards.

See user manual.

7.6 Checking the cables

- Switch the electronics OFF on the remote.
- Remove the rear cover, as described in chapter 7.1.1.
- Check all cables for visible damage, crushing points or abrasion points.
- Replace damaged cables.
- Pull on each plug carefully. The plug must not come out of its socket when pulled on lightly.
- If a plug is loose, apply slight pressure to push the plug into the socket. The plug must snap in place securely.
- Check that the plug is firmly attached to its socket.
- Remove the batteries, as described in chapter 7.4.
- Check the battery cables for visible damage, crushing points or abrasion points.
- Replace damaged cables.
- Assemble all parts again in reverse order.
- The last step is to test all functions of the vehicle.

7.7 Front wheels

7.7.1 Replacing front wheel



ATTENTION: Danger of crushing to the hands and feet by the weight of the wheelchair!

- Pay attention to the hand and feet.
- Use proper lifting techniques.

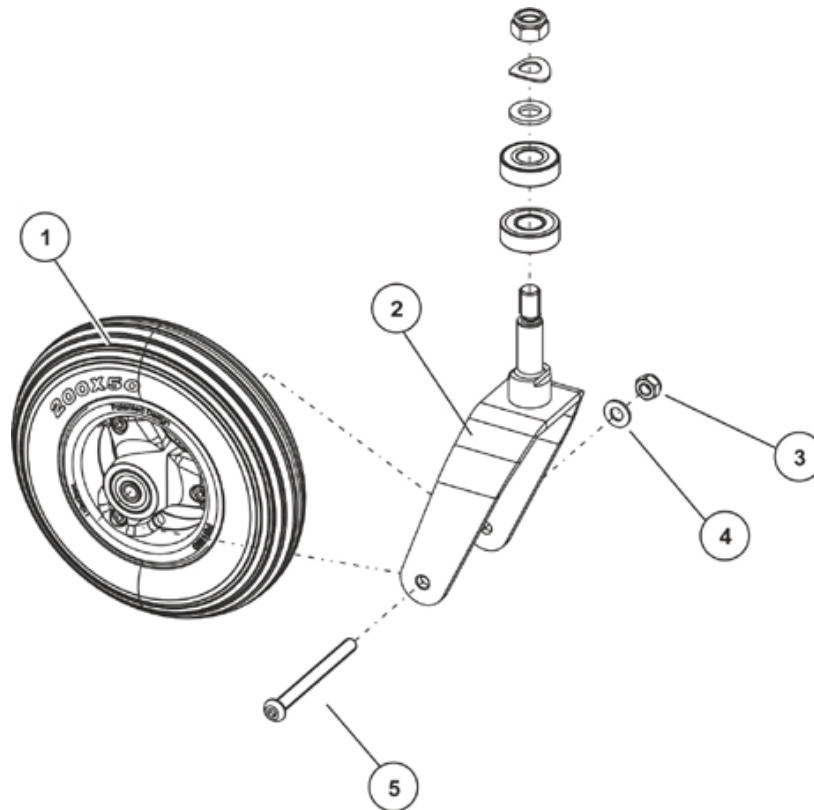
Danger of injury due to uncontrolled movement of the wheelchair!

- Switch the vehicle's power system off (ON-/OFF key).
- Engage the drive motors.
- Secure the vehicle against rolling away by placing wedges under the wheels.



Requirements:

- 5 mm Allen key
- 13 mm open-ended spanner
- oblong wooden block (approx. 14 x 14x 30 cm)



Removing the wheel:

- Prop up the wheelchair on multiple wooden blocks. Use proper lifting techniques.
- Counter the axle nut (3) using an open-end wrench.
- Loosen and remove the Allen screw (5). Pay attention to the washer (4).
- Pull the axle out of the front fork (2).
- Pull the wheel (1) out of the front fork.

Refitting the wheel:

- Refit the parts in reverse order.
- When installing the wheel, pay attention to the correct direction of rotation.

7.7.2 Replacing/reversing the swinging axle

The swinging axle can be rotated to change the wheelbase.

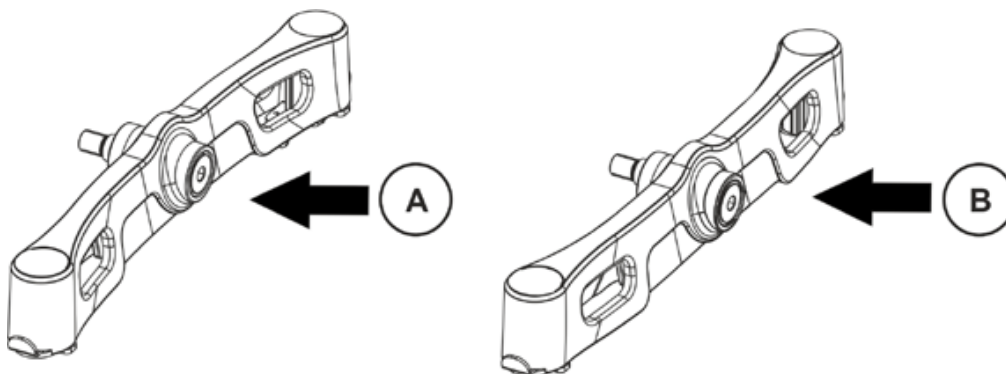
Fitting the swinging axle facing:

Figure (A)

long wheelbase

Figure (B)

short wheelbase



If you change the wheelbase, the centre column on the chassis (see chapter 7.7.3) must be adapted accordingly.

**ATTENTION: Danger of crushing to the hands and feet by the weight of the wheelchair!**

- Pay attention to the hand and feet.
- Use proper lifting techniques.

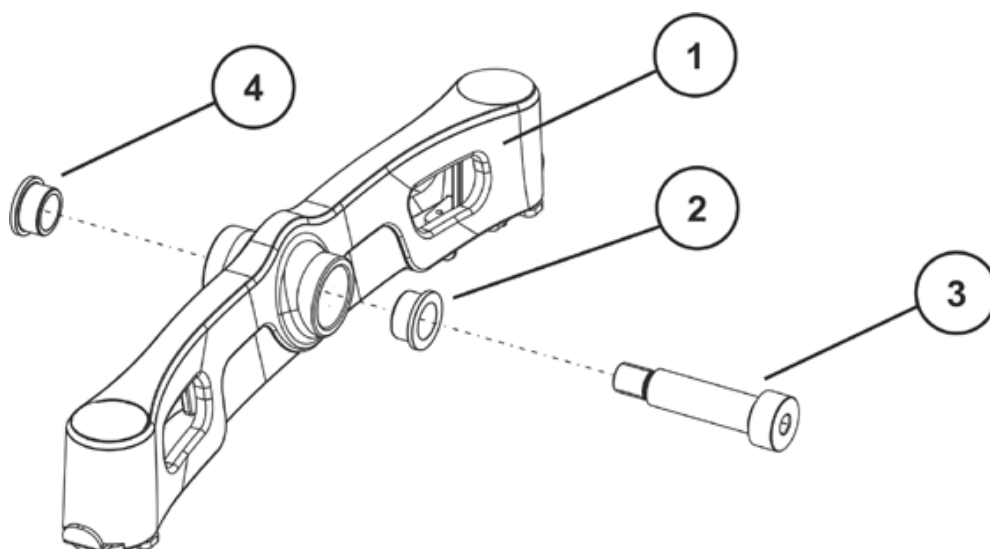
Danger of injury due to uncontrolled movement of the wheelchair!

- Switch the vehicle's power system off (ON-/OFF key).
- Engage the drive motors.
- Secure the vehicle against rolling away by placing wedges under the wheels.

**Requirements:**

- 10 mm Allen key
- wooden block (approx. 14 x 14 x 30 cm for propping up vehicle)
- medium strength threadlocker, such as OmniFit 100M

- Remove the legrests.
- Place a wooden block approximately 14 cm high under the curb climber so that the swinging axle can hang free. Use proper lifting techniques.

**Dismantling the swinging axle:**

- Heat the screw (3) using a hot air gun to soften the thread locking adhesive.
- Remove the screw (3) with a 10 mm Allen key.
- Pull the swinging axle (1) off the chassis and remove the guide bushes (2 and 4).

Refitting the swinging axle:

- Refit the parts in reverse order.
- Tighten the screw (3) to 70 Nm +/- 10 Nm.

7.7.3 Changing the wheelbase



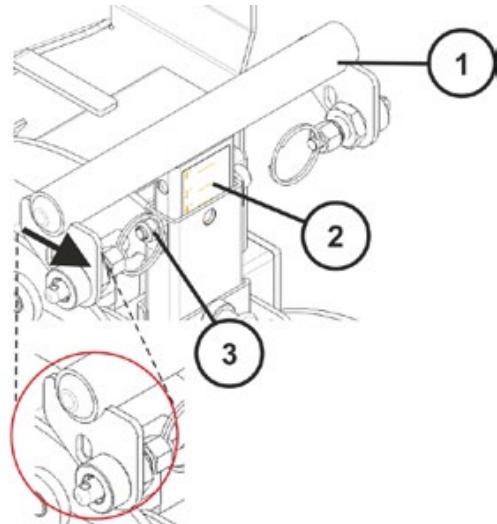
Requirements:

- 5 mm Allen key
- 10 mm socket spanner

- Remove the seat, as described in chapter 7.12.1.
- Loosen and remove the screw and nut (3).
- Adjust the center column (see illustrations).

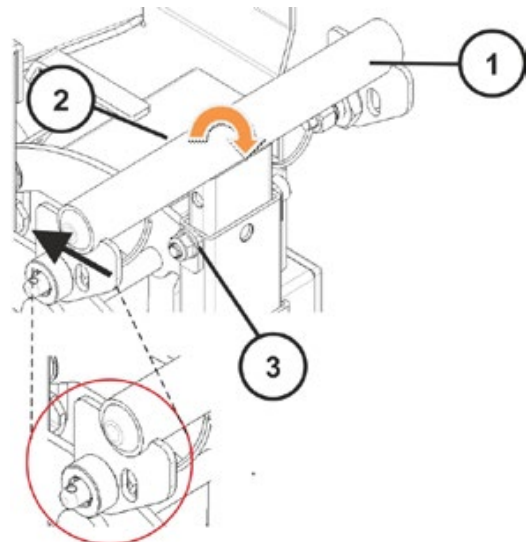
Long wheelbase

Adjustment of centre column (1) on chassis ->
The scale (2) is **at the front**.



Short wheelbase

Rotating the centre column:
Adjustment of centre column (1) on chassis ->
The scale (2) is **at the back**



Note

Changing the wheelbase influences the seat depth and the centre of gravity (chapter 9.4). You may need to adjust the seat depth to meet your requirements. Please refer to chapter 9.1.2.

- Refit the parts in reverse order.
- Check all functions of the vehicle and go for a test drive.

7.7.4 Replacing the steering head bearings on the steering wheels



ATTENTION: Danger of crushing to the hands and feet by the weight of the wheelchair!

- Pay attention to the hand and feet.
- Use proper lifting techniques.

Danger of injury due to uncontrolled movement of the wheelchair!

- Switch the vehicle's power system off (ON-/OFF key).
 - Engage the drive motors.
 - Secure the vehicle against rolling away by placing wedges under the wheels.
-

**CAUTION!****Incorrect reassembly can damage the bearings and cause the steering wheels to fall out!**

The single-row angular ball bearing rings are not identical on both sides! There is only one correct way to insert them!

- Follow the assembly instructions precisely!
-

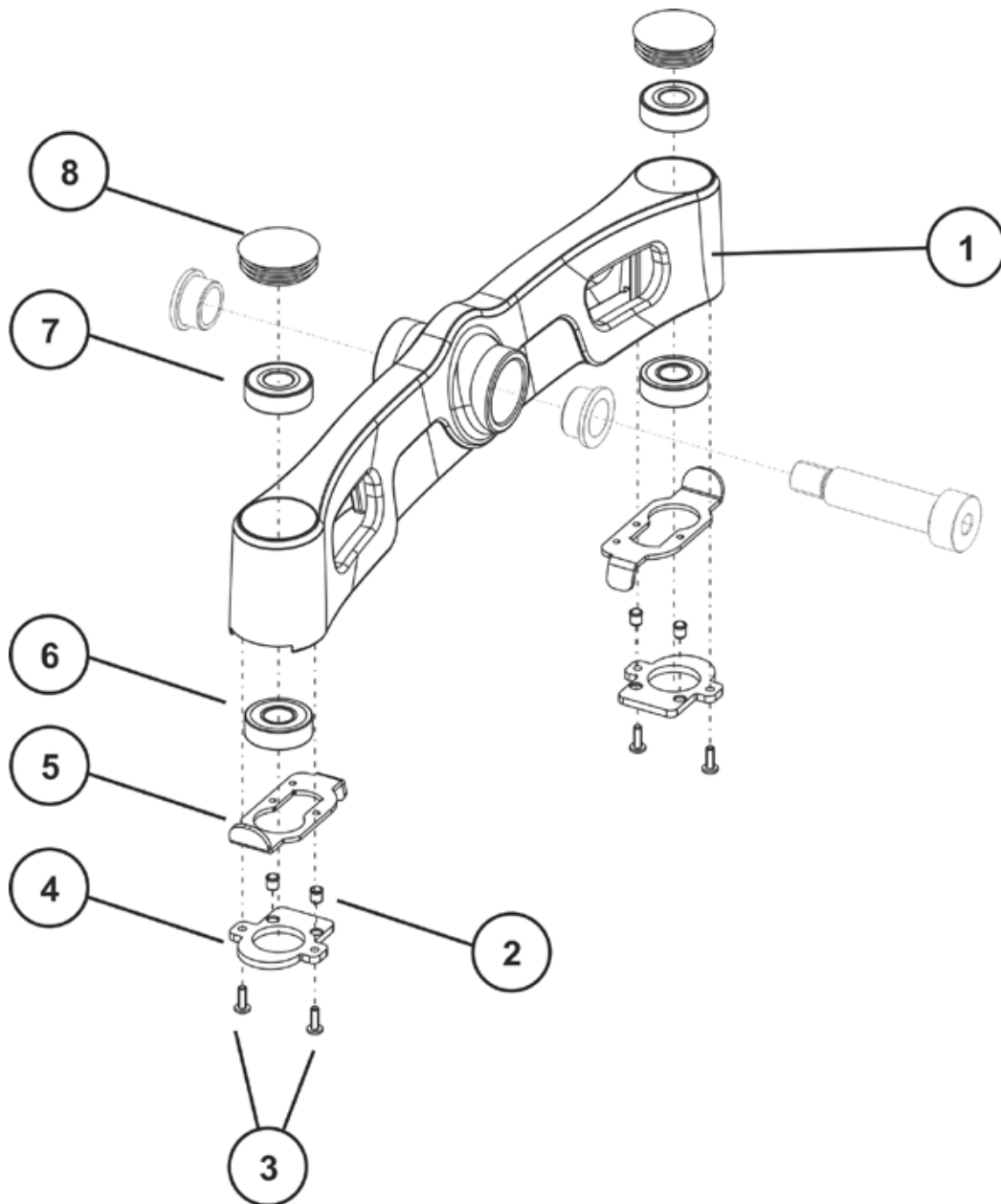
**Requirements:**

- Phillips screwdriver, size 2
 - Phillips screwdriver, 19 mm (caster locks)
 - Torque wrench
 - large screwdriver, flat
 - wooden block (approx. 12 x 12x 30 cm for propping up vehicle)
-

**Note**

When disassembling, take care of small parts such as screws and washers. Put all small parts down so that they can be reassembled in the right sequence.

- Remove the legrests.
- Secure the vehicle against rolling away.
- Place a wooden block approximately 14 cm high under the curb climber so that the swinging axle is hanging free or dismantle the swinging axle as described in chapter 7.7.2 and secure the swinging axle with a vice.

**Dismantling the steering head bearings:**

- Release the caster locks (5) for the front wheels on the swinging axle (1).
- Remove the front wheels, as described in chapter 7.1.1.
- Use a screwdriver to remove the plastic cap (8).
- Loosen and remove the screws (3) with a 19 mm Phillips screwdriver and remove the locking plate (4).
- Remove the caster lock (5) and the ball bearings (6) and (7).
- Replace all steering head bearings.

Refitting the steering head bearings:

- Assemble the parts in reverse order.

**Note**

Ensure that the bearings are inserted precisely as described in chapter 7.7.5.

Ensure that the correct caster locks (5) are inserted (left-hand and right-hand sides have different locks).

Ensure that the sprung thrust pieces (2) are seated precisely in the securing seat (4) when reassembling.

- Refit the bolts (3) with a medium-strength screw securing system (such as OmniFit 100 M).
- Refit the swinging axle as described in chapter 7.7.2.
- Installing the front wheels, as described in chapter 7.7.1.
- Check all functions of the vehicle and go for a test drive.

7.7.5 Installing the ball bearings**CAUTION!**

Incorrect reassembly can damage the bearings and cause the steering wheels to fall out!

The single-row angular ball bearing rings are not identical on both sides! There is only one correct way to insert them!

- *The bearings must always be assembled so that the narrow borders of the ball bearings are facing each other (inside)!*
- *The steering head bolts and nuts must always be pressing against the wide (outside) border of the ball bearings! Otherwise, the bearings will be pressed apart and damaged by the bolts!*

The illustrations show the wide border of the ball bearing on the outside of the ball race (A) and the narrow ball bearing edge on the inside (B).



After assembly, the steering wheels should rotate freely but the bearings should have no play.

7.7.6 Replacing the rubber bumper

**Note**

Invacare® recommends that you replace all the rubber bumpers as soon as one needs replacing.

**Requirements:**

- 10 mm open-ended spanner

Removing the rubber bumper:

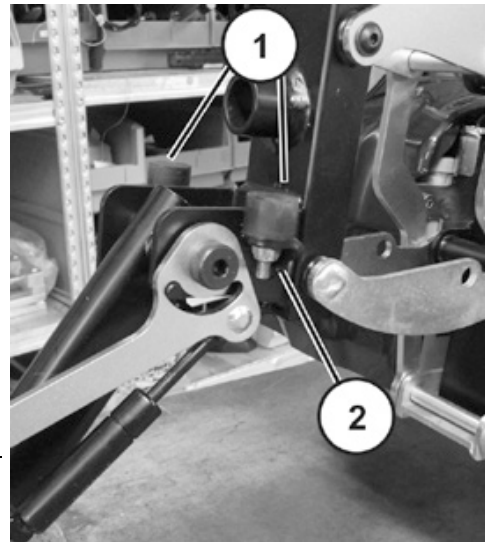
- Remove the swinging axle as described in chapter 7.7.2.
- Loosen and remove the nut (2) with a 10 mm open-ended spanner.
- Remove the rubber bumper (1) on both sides.
- Replace the rubber bumper.

Refitting the rubber bumper:

- Refit the parts in reverse order.

**Note**

The rubber bumper is screwed into the thread as far as to stop, and then counted using the nut.



7.7.7 Replacing the caster locks



ATTENTION: Danger of crushing to the hands and feet by the weight of the wheelchair!

- Pay attention to the hand and feet.
- Use proper lifting techniques.

Danger of injury due to uncontrolled movement of the wheelchair!

- Switch the vehicle's power system off (ON-/OFF key).
- Engage the drive motors.
- Secure the vehicle against rolling away by placing wedges under the wheels.



CAUTION!

Incorrect reassembly can damage the bearings and cause the steering wheels to fall out!

The single-row angular ball bearing rings are not identical on both sides! There is only one correct way to insert them!

- Follow the assembly instructions precisely!

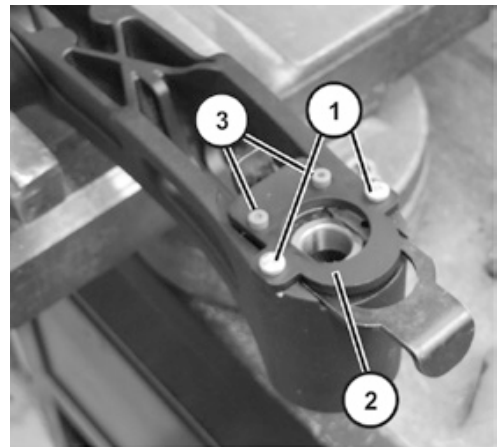


Requirements:

- Phillips screwdriver, size 2
- Phillips screwdriver, 19 mm (caster locks)
- Torque wrench
- large screwdriver, flat
- wooden block (approx. 12 x 12 x 30 cm for propping up vehicle)

Removing the caster lock:

- Remove the swinging axle as described in chapter 7.7.2.
- Remove the front wheels, as described in chapter 7.1.1.
- Loosen and remove the screws (1) with a 19 mm Phillips screwdriver and remove the locking plate (2).
- Remove the caster locks (4) from the swinging axle.
- Replace all parts.



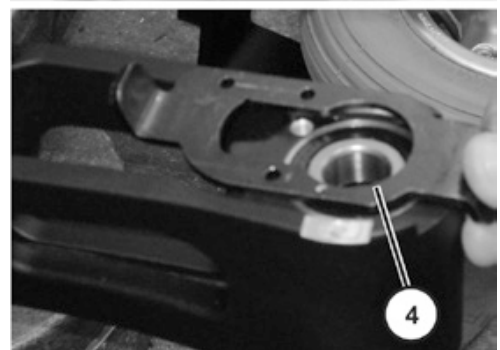
Assembling the caster lock:

- Assemble the parts in reverse order.



Note

Ensure that the correct caster locks (4) are inserted (left-hand and right-hand sides have different locks). Ensure that the sprung thrust pieces (3) are seated precisely in the securing seat (2) when reassembling.



7.8 Drive wheels

7.8.1 Replacing the drive wheels (wheel size 12½ x 2¼")



ATTENTION: Danger of crushing to the hands and feet by the weight of the wheelchair!

- Pay attention to the hand and feet.
- Use proper lifting techniques.

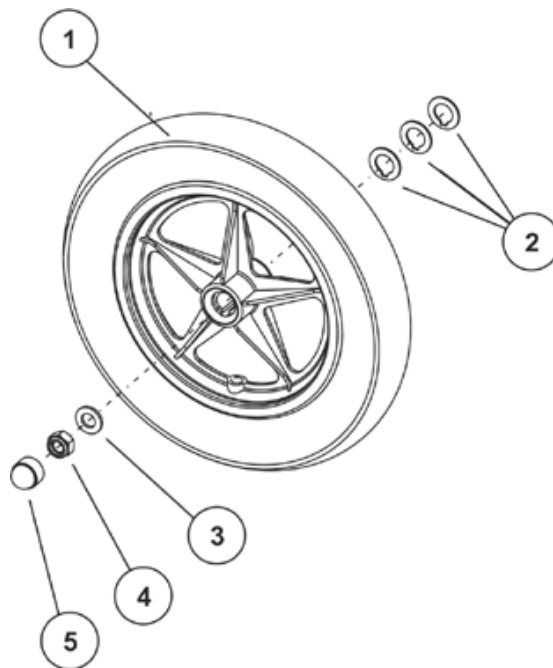
Danger of injury due to uncontrolled movement of the wheelchair!

- Switch the vehicle's power system off (ON-/OFF key).
- Engage the drive motors.
- Secure the vehicle against rolling away by placing wedges under the wheels.



Requirements:

- 19 mm socket spanner
- 19 mm open-ended spanner
- blade screwdriver
- oblong wooden blocks (approx. 14 x 14 x 30 cm)



Removing the wheel:

- Prop up the wheelchair on multiple wooden blocks. Use proper lifting techniques.
- Use a Phillips screwdriver to remove the plastic cap (5).
- Loosen and remove the nut (4) with a 19 mm socket spanner.
- Remove the washer (3).
- Pull the wheel (1) out of the axle.
- Remove the remaining washers (2).

Refitting the wheel:

- Refit the parts in reverse order.
- When installing the wheel, pay attention to the correct direction of rotation.
- Tighten the nut (4) to 35 Nm +/-10% Nm.

7.8.2 Replacing the drive wheels (wheel size 12½ PS)



ATTENTION: Danger of crushing to the hands and feet by the weight of the wheelchair!

- Pay attention to the hand and feet.
- Use proper lifting techniques.

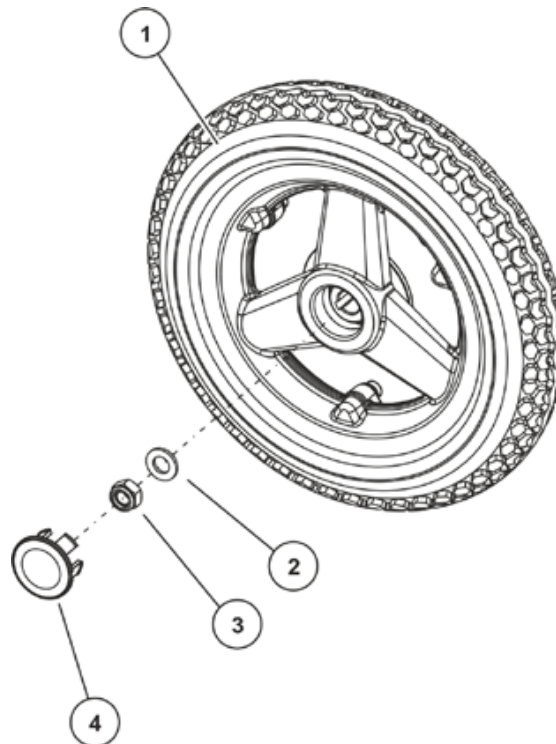
Danger of injury due to uncontrolled movement of the wheelchair!

- Switch the vehicle's power system off (ON-/OFF key).
- Engage the drive motors.
- Secure the vehicle against rolling away by placing wedges under the wheels.



Requirements:

- 19 mm socket spanner
- 19 mm open-ended spanner
- blade screwdriver
- long wooden blocks (approx. 14 x 14 x 30 cm)



Removing the wheel:

- Prop up the wheelchair on multiple wooden blocks. Use proper lifting techniques.
- Use a Phillips screwdriver to remove the plastic cap (4).
- Loosen and remove the nut (3) with a 19 mm socket spanner.
- Remove the washer (2).
- Pull the wheel (1) out of the axle.

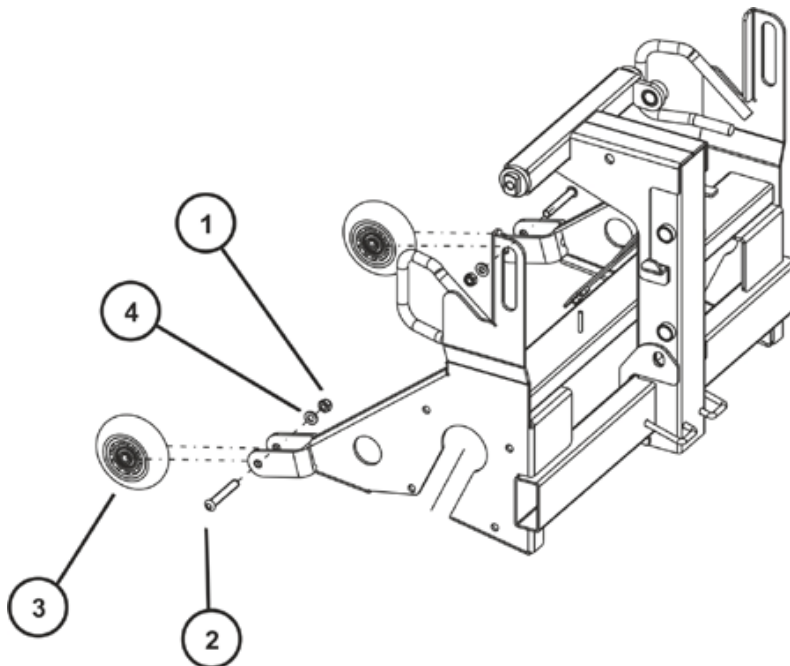
Refitting the wheel:

- Refit the parts in reverse order.
- When installing the wheel, pay attention to the correct direction of rotation.
- Tighten the nut (3) to 35 Nm +/-10% Nm.

7.9 Anti-tipper wheels

**Requirements:**

- 6 mm Allen key
- 13 mm ring spanner or jaw spanner

Removing the anti-tipper wheel:

- Loosen the screw (2) with a 6 mm Allen key. Hold the self-locking axle nut (1) with a 13 mm ring or open-ended spanner against turning.
- Remove the screw (2), the washer (4) and the axle nut (1).
- Pull the wheel (3) out of the axle.
- Replace the anti-tipper wheel.

Refitting the anti-tipper wheel:

- Refit the parts in reverse order.
- Tighten the axle nuts just tight enough that the wheel can still rotate without resistance.

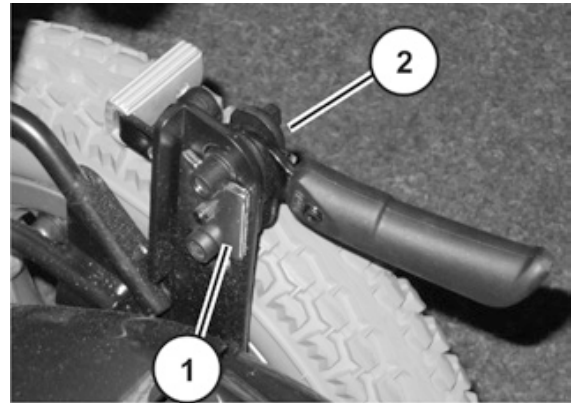
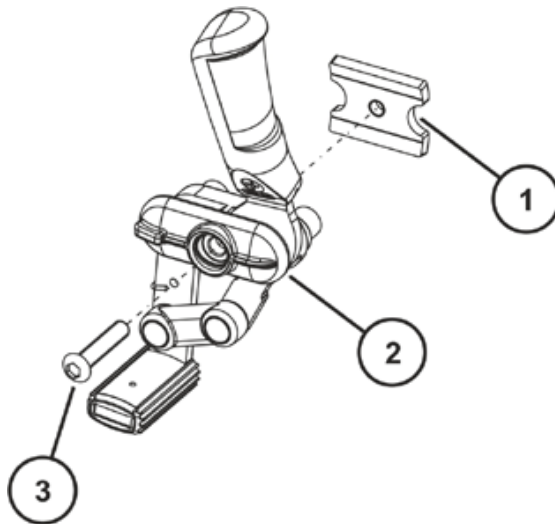
7.10 Replacing the parking brake



Requirements:

- 5 mm Allen key

- Secure the vehicle against rolling away.
- Bring the seat into the service position, as described in chapter 7.12.1.



Removing the parking brake:

- Loosen the brake (2) by pressing the lever down.
- Loosen and remove the screw (3) with a 5 mm Allen key.
- Remove the parking brake (2) including clamping plate (1) from the chassis.
- Replace the parking brake.

Refitting the parking brake:

- Refit the parts of the parking brake in reverse order.
- Ensure that the clamping plate is firmly fixed.
- After this, test the wheel lock function.

7.11 Drive unit

7.11.1 Replacing the motor/transmission unit Shark/VR2



ATTENTION: Danger of crushing to the hands and feet by the weight of the wheelchair!

- Pay attention to the hand and feet.
- Use proper lifting techniques.

Danger of injury due to uncontrolled movement of the wheelchair!

- Switch the vehicle's power system off (ON-/OFF key).
 - Engage the drive motors.
 - Secure the vehicle against rolling away by placing wedges under the wheels.
-



ATTENTION: Danger of crushing!

The motor gearbox unit is extremely heavy. Injury hazards to hands!

- Please note the high weight
-



Requirements:

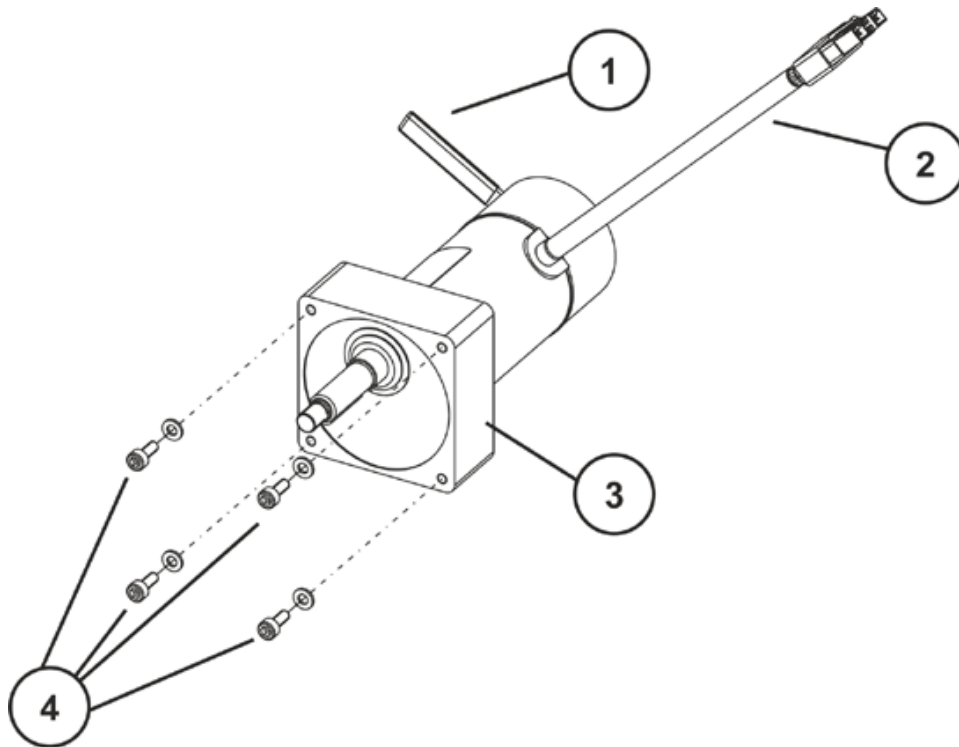
- 5 mm Allen key
 - oblong wooden blocks, approx. 14 x 14 x 30 cm
-



Note

When replacing the motor transmission unit, ensure that this matches the right power module type. Please refer to chapter 4 for an overview of power module types.

- Switch the electronics OFF on the remote.
- Remove the rear cover, as described in chapter 7.1.1.
- Lift the wheelchair on one side and place a 14 cm high wooden block underneath it so that the drive wheel is off the ground and can rotate freely. Use proper lifting techniques.
- Pull the motor plug (2) out of the power module.
- Remove the drive wheel, as described in chapter 7.8.

Removing the motor/transmission unit:

- Loosen the four Allen screws (4) with a 5 mm Allen key.
- Remove the screws (4) together with the washers.
- Pull the motor transmission unit (3) downwards out of the chassis. Take into account the heavy weight of the unit.
- Replace the drive unit.

Refitting the motor/transmission unit:**Note**

Before refitting a new motor-transmission unit, check to see whether this should be fitted to the left-hand or right-hand side of the mobility device. The drive units are different. Note the labelling on the motor plug.

- Refit the motor transmission unit in the reverse order.
- Reconnect the motor cable (2) to the power module.
- Make sure that the motor cable cannot be pinched or bent, and that it is not exposed to chafing in any place.
- Tighten the screws (4) to 7 Nm +/- 1 Nm.
- To conclude, you should always carry out a trial run to test the vehicle functions.

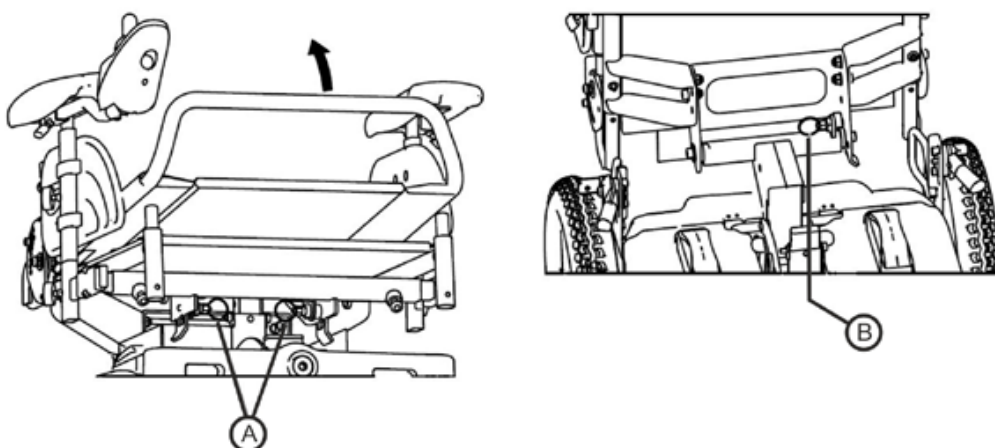
7.12 Seat system

7.12.1 Moving the seat into the service position

It is necessary to move the seat into the service position or to remove it for maintenance purposes or if the batteries have to be removed.

- Secure the vehicle against rolling away by pressing the parking brake down.
- Remove the legrests.

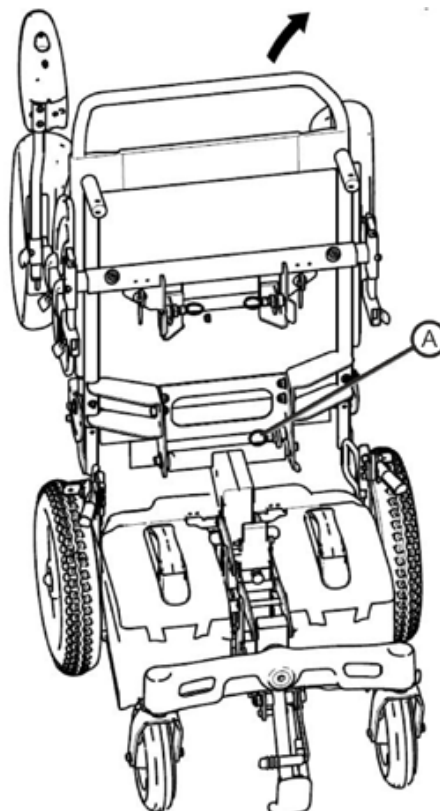
Removing the seat / service position:



- Pull the safety latch (A) on the centre column to unlock the seat.
- Fold the seat backwards until the rear safety latch (B) engages on the rear post.

The seat is now in the service position.

- Now pull the safety latch (A) on the rear post back and tilt the seat into the vertical position.
- Remove the seat.



Installing the seat:

- Place the seat vertically onto its holder again.
- Fold the seat forward.
- Make sure the safety latches (A) on the center post engage.

7.12.2 Replacing the seat frame



ATTENTION: Danger of crushing!

The seat/seat support is very heavy. Danger of injury to hands and feet!

- Use proper lifting techniques



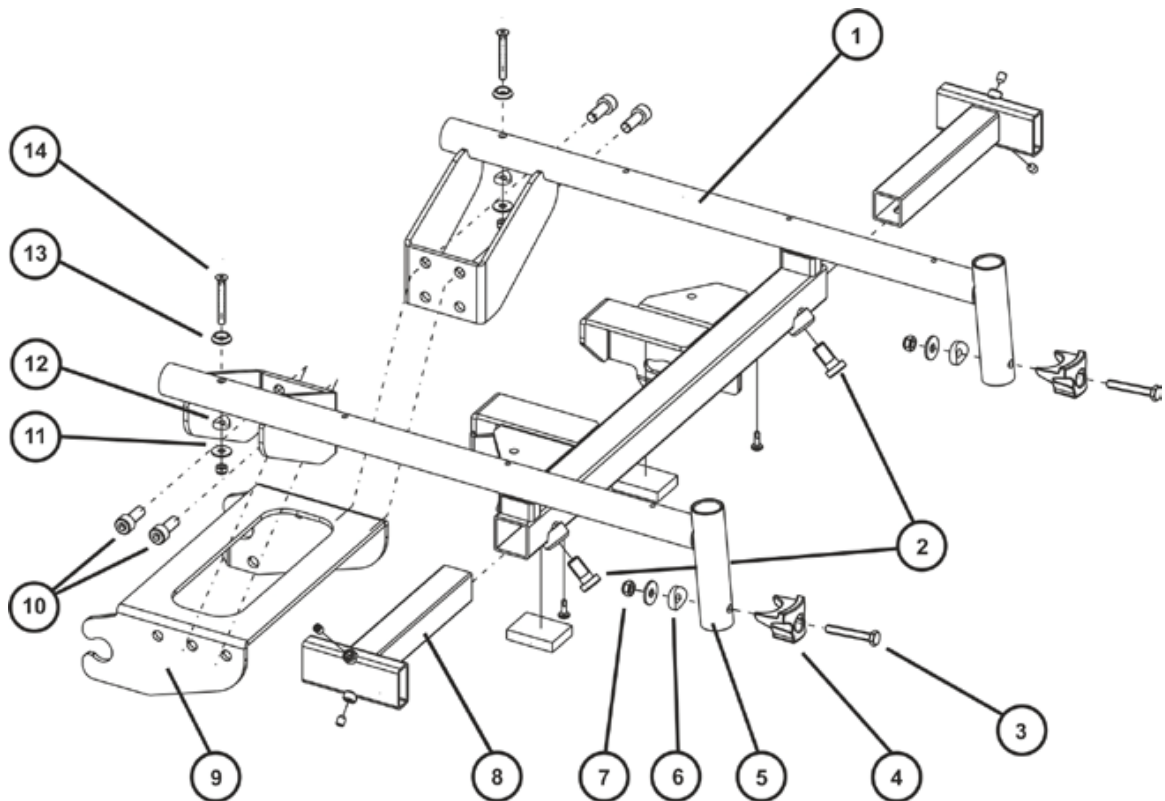
Requirements:

- Phillips screwdriver, size 2
- 5 mm/6 mm Allen key
- Side cutting pliers
- Cable ties



Note

When disassembling, take care of small parts such as screws and washers. Put all small parts down so that they can be reassembled in the right sequence.



Dismantling the seat frame:

- Remove any cable ties which may have been fitted to hold the cable away from the remote. Remove the cable from the glued terminals. Remove the cable so that there is no cable connection between the seat and the chassis.
- Release the screws for the remote. Remove the remote and keep it in a safe place.
- Remove the legrests.
- Remove the armrests, as described in chapter 7.14.1.
- Put the seat into the service position and separate the seat from the chassis.
- Remove the fabric seat, as described in chapter 7.12.3.

- Loosen and remove the bolts (3) incl. fixing (4), the round disk (6), the washer and the nut (7) from the legrest holder. Repeat these stages on the other side of the seat frame (1).
- Remove the backrest unit, as described in chapter 7.13.
- Remove the fixing bolts (2) for the armrests (8).
- Loosen and remove the bolt (14) incl. rosette (13), the round disk (12), the washer (11) and the nut from the seat extension.
- Loosen and remove the bolts (10) with a 6 mm Allen key. Repeat these stages on the other side of the seat frame (1).
- Remove the seat frame from the seat support (9).
- Replace the seat frame or seat support.

Refitting the seat frame:

- Assemble the parts in reverse order.

**Note**

When refitting, ensure that the round disks (6) (12) are in the correct position.

- Check all functions of the vehicle and go for a test drive.

7.12.3 Replacing the fabric seat (padded)



ATTENTION: Danger of crushing!

The seat/seat support is very heavy. Danger of injury to hands and feet!

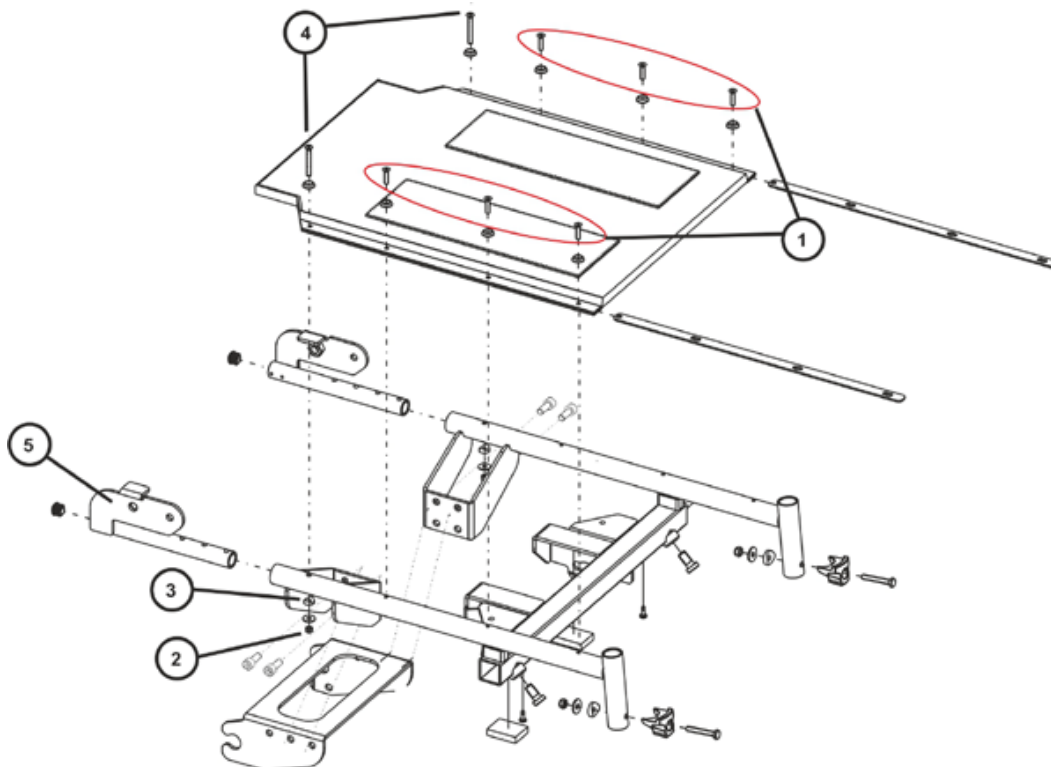
- Use proper lifting techniques



Requirements:

- Phillips screwdriver, size 2
- 8 mm open-ended spanner

- Remove the seat cushion.
- Remove the armrests as described in chapter 7.14.1.



Dismantling the fabric seat:

- Loosen and remove the six screws (1) including rosette with a Phillips screwdriver.
- Loosen and remove the screw (4) including the rosette, the circular washer (3), washer and the nut (2). The screw (4) is also used to adjust the seat depth (5), see chapter 9.1.2.1.
- Replace the fabric seat.

Refitting the fabric seat:

- Refit the parts in reverse order.



Note

When refitting, ensure that the round disk (3) is in the correct position.

The bolts (4) are fixed by the fabric seat at the end.

- To conclude, you should always carry out a trial run to test the vehicle functions.

7.12.4 Replacing the fabric seat (stretched)



ATTENTION: Danger of crushing!

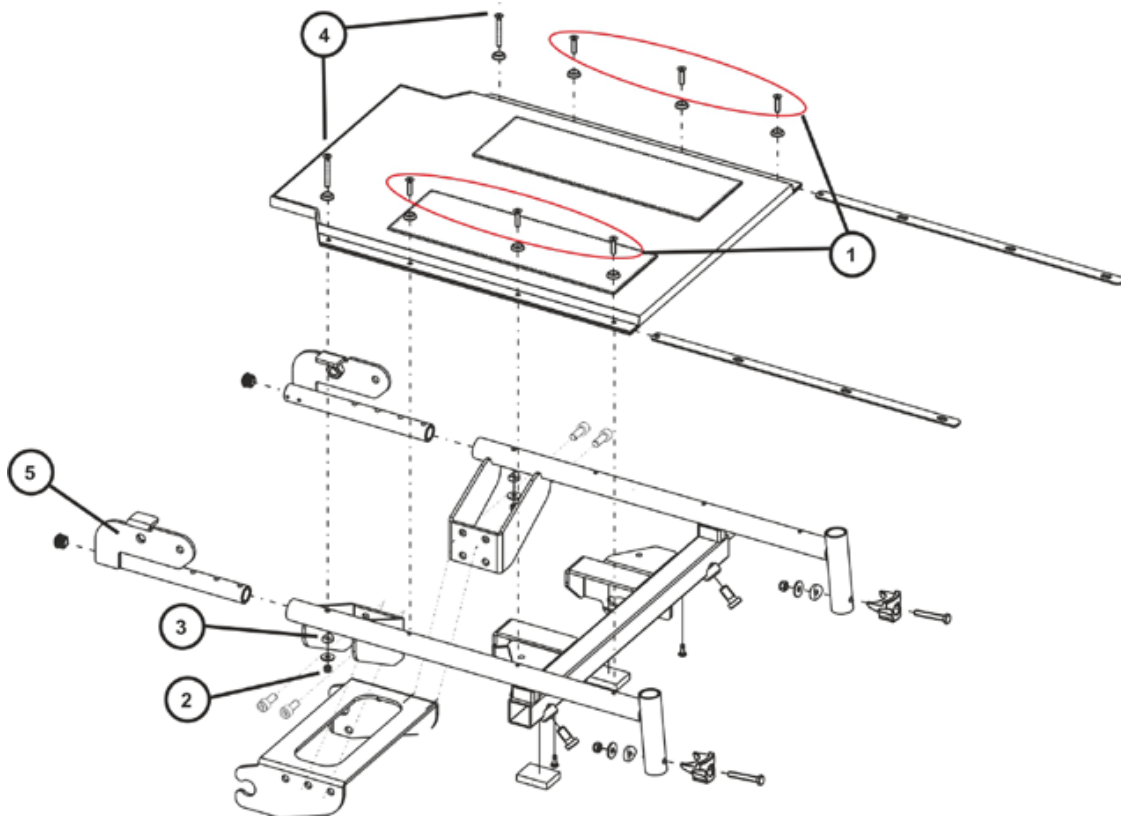
The seat/seat support is very heavy. Danger of injury to hands and feet!

- Use proper lifting techniques



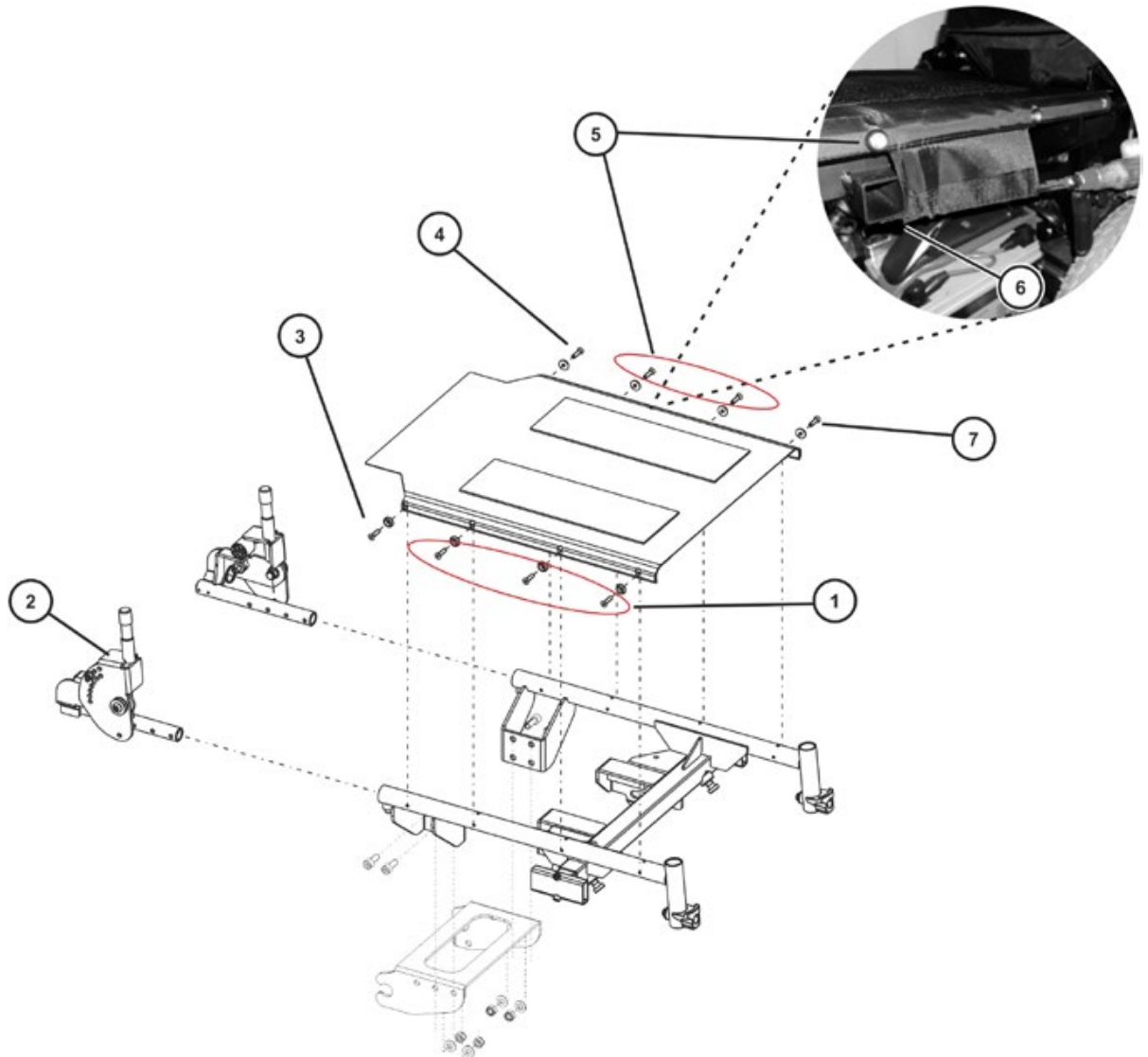
Requirements:

- Phillips screwdriver, size 2
- 8 mm open-ended spanner



Dismantling the fabric seat:

- Loosen and remove the eight screws (1) including rosette with a Phillips screwdriver.
- Replace the fabric seat.



Refitting the fabric seat:

- Position the backrest mounting bracket (2) according to the seat depth, so that the holes (3) and (4) are aligned.
- Slightly tighten the set screws that are located underneath the backrest mounting bracket.
- Insert the four Phillips screws (1) and (3) on the right side of the wheelchair frame first. However, do not tighten the screws completely.
- Tighten the textile seat using a large screwdriver or a similar tool, by pressing the screwdriver in the flap against the chassis (6).
- First insert the two middle Phillips screws (5) and then the outer screws (7 and 4) including washers and tighten these with the corresponding torque (6 Nm).
- After this, tighten the screws (1) and (3) to the corresponding torque (6 Nm).
- Tighten the set screw.

**Note**

The screws (3) and (4) are also used to adjust the seat depth with the backrest unit (2), see chapter 9.1.2.2.

- Push the flap under the seat frame.
- Refit the armrests as described in chapter 7.14.1.
- To conclude, you should always carry out a trial run to test the vehicle functions.

7.12.5 Replacing the seat plate



ATTENTION: Danger of crushing!

The seat/seat support is very heavy. Danger of injury to hands and feet!

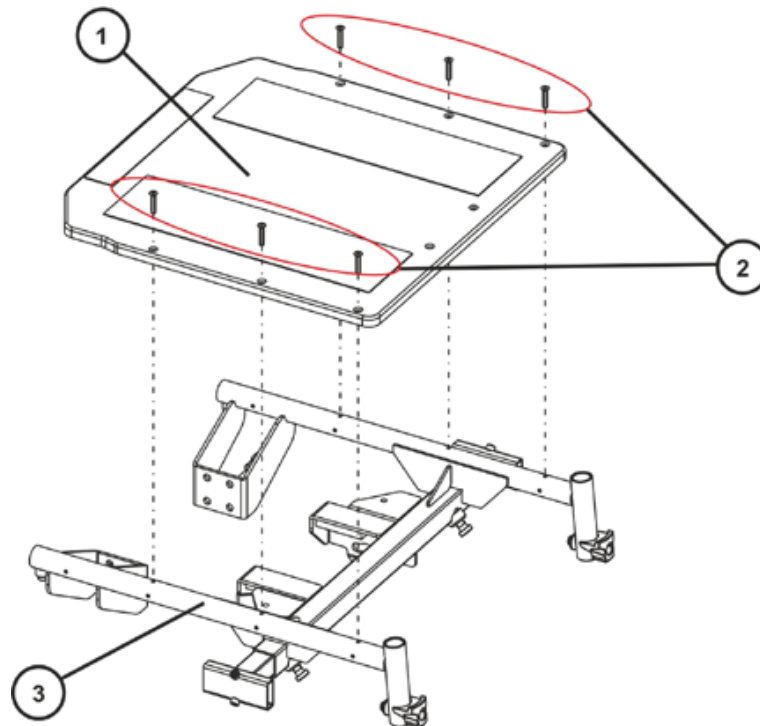
- Use proper lifting techniques



Requirements:

- Phillips screwdriver, size 2
- 8 mm open-ended spanner

- Remove the seat cushion.
- Remove the armrests as described in chapter 7.14.1.



Dismantling the seat plate:

- Loosen and remove the six Phillips screws (1) with a Phillips screwdriver.
- Lift the seat plate from the seat frame.
- Replace the seat plate or fit the fabric seat if required as described in chapter 7.12.4

Refitting the seat plate:

- Refit the parts in reverse order.

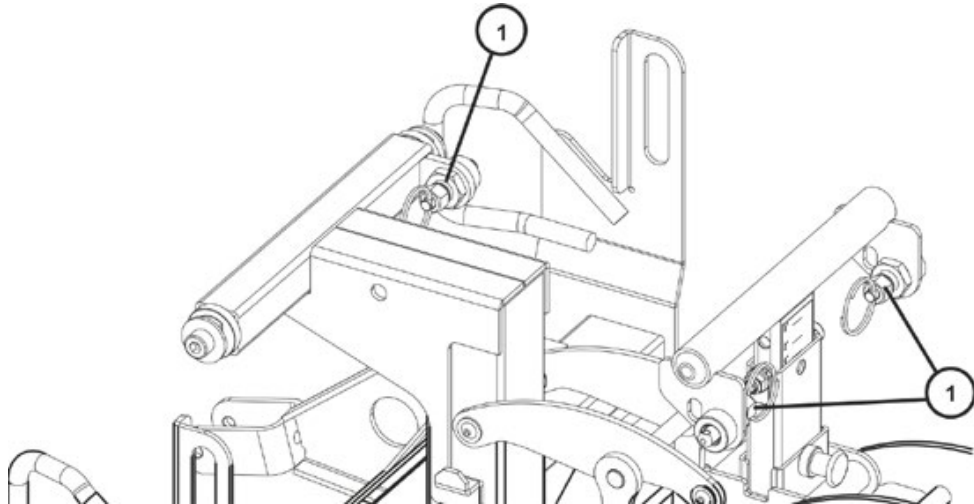
7.12.6 Replacing the safety latch



Requirements:

- 24 mm open-ended spanner
-

- Remove the seat, as described in chapter 7.12.1.


Dismantling the safety latch:

- Loosen the adjusting ring using a 24 mm open-ended spanner.
- Unscrew the safety latch (1) and replace it.

Refitting the safety latch:

- Refit the parts in reverse order.
- Screw the safety latch (1) in and adjust it.

7.12.7 Adjusting the safety latch



Requirements:

- 24 mm open-ended spanner
-

- Loosen the adjusting ring using a 24 mm open-ended spanner.
- Screw the safety latch (1) in so that the spring-loaded catch engages securely and is flush with the outside edge when it is pulled.
- Tighten the adjusting ring hand-tight with a 24 mm open-ended spanner (15 Nm +/-1 Nm).

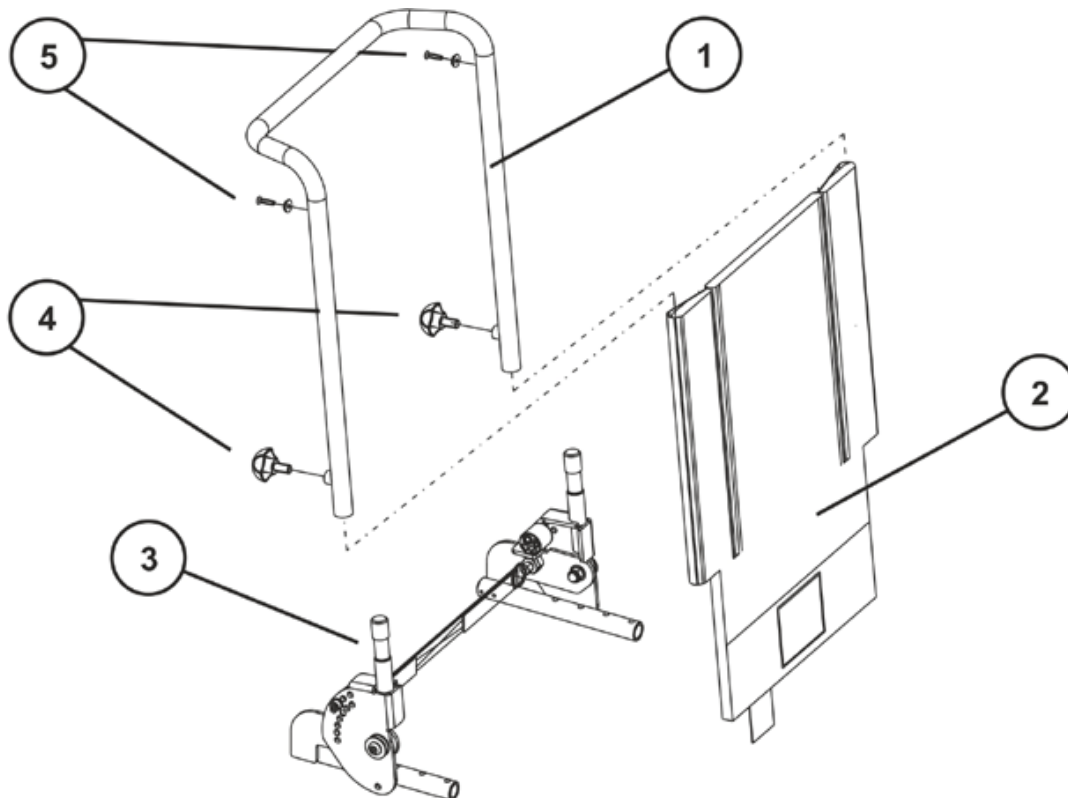
7.13 Backrest unit

7.13.1 Replacing the standard backrest



Requirements:

- Phillips screwdriver, size 2



Dismantling the backrest unit:

- Remove the backrest tube (1) from the backrest holder (2) by loosening the handwheels.
- Loosen and remove the screws (5), including the washers with a Phillips screwdriver.
- Remove the handwheels (4).
- Remove the backrest tube (1) from the fabric back (2).
- Replace the backrest holders, as described in chapter 7.13.2.
- .

Refitting the backrest unit:

- Replace the parts in the reverse order.
- To conclude, you should always carry out a trial run to test the vehicle functions

7.13.2 Replacing a standard backrest with quick release



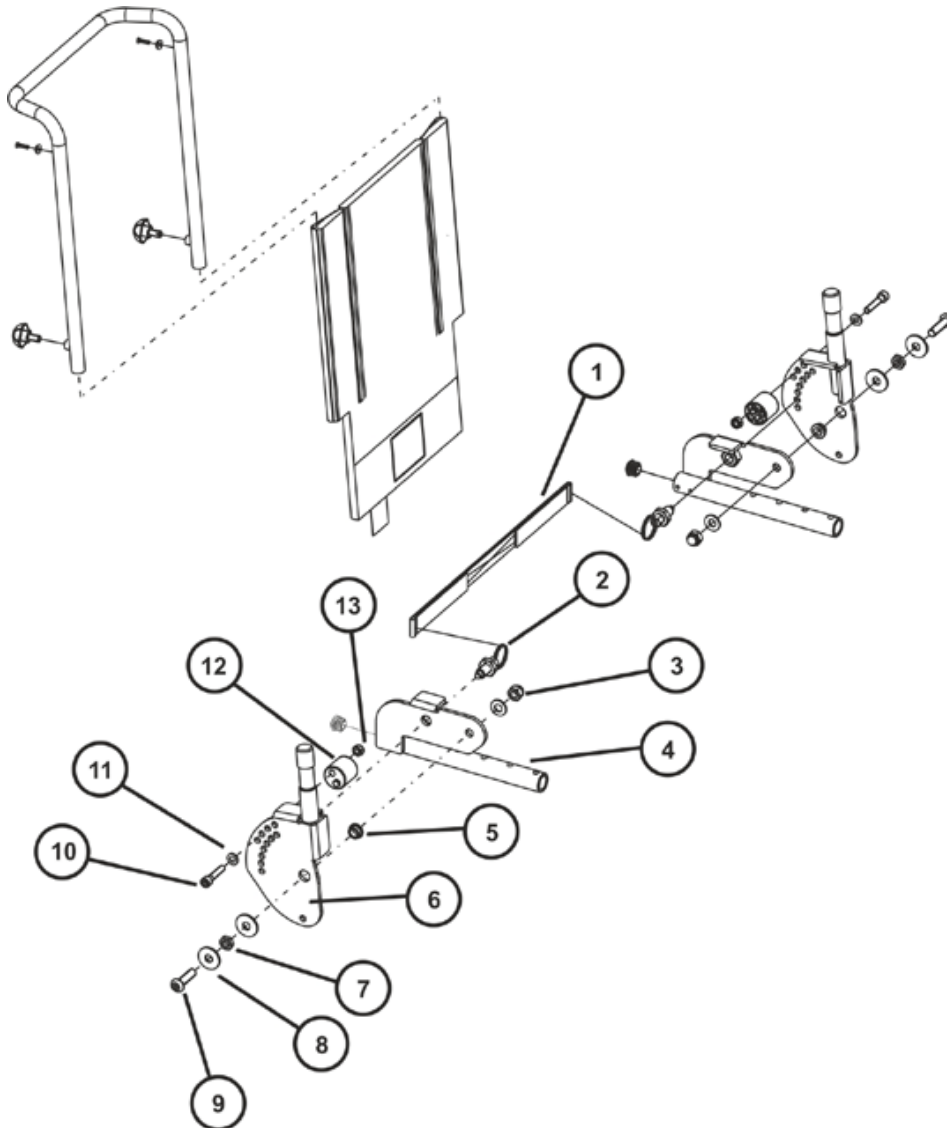
Requirements:

- Phillips screwdriver, size 2
- 5 mm Allen key
- 13 mm open-ended spanner



Note

When disassembling, take care of small parts such as screws and washers. Put all small parts down so that they can be reassembled in the right sequence.



Dismantling the backrest unit:

- Remove the backrest unit, as described in chapter 7.13.1.
- Loosen and remove the Allen screw (9) including washers (8), bushings (5) and nut (3) on the left-hand and right-hand side of the chair. Use an Allen key and an open-ended spanner.
- Pull the quick release cord (1) to unlock the backrest tube.

- Loosen and remove the Allen screws (9) including washers (8), stopper (12) and nut (13) on the left-hand and right-hand side of the chair. Use an Allen key and an open-ended spanner.
- Remove the backrest holders (6) including quick release cord (1).

Refitting the backrest unit:

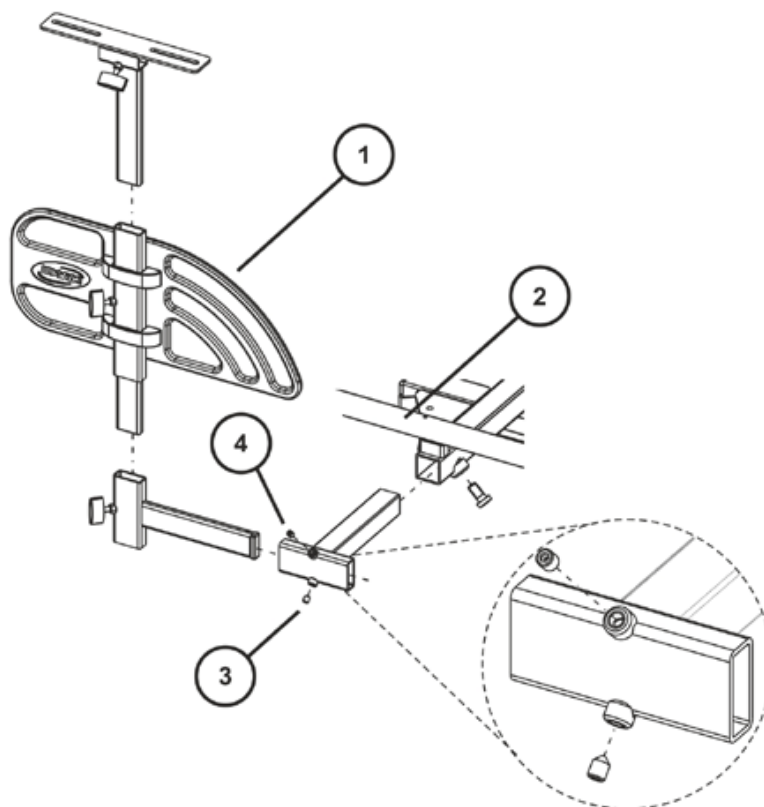
- Replace the parts in the reverse order.
- Refit the backrest unit, as described in chapter 7.13.1.
- To conclude, you should always carry out a trial run to test the vehicle functions.

7.14 Armrest

7.14.1 Replacing the armrest

**Requirements:**

- 6 mm Allen key

**Dismantling the armrest:**

- Loosen the Allen screws (3 and 4) with a 6 mm Allen key and pull the armrest out of the holder.
- Replace the armrest.

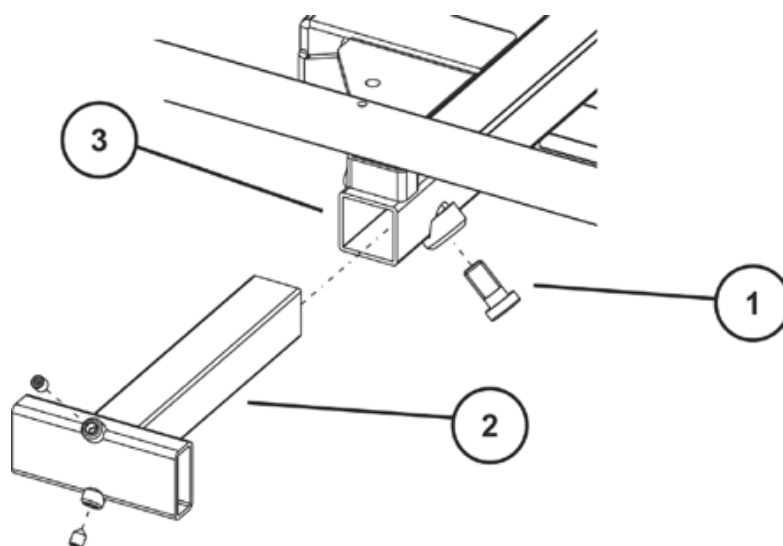
Refitting the armrest:

- Refit the parts in reverse order.

7.14.2 Replacing the holder

**Requirements:**

- 10 mm Allen key

**Dismantling the holder:**

- Loosen the Allen screw (1) with a 10 mm Allen key and pull the holder (2) out of the seat frame (3).
- Replace the holder.

Refitting the holder:

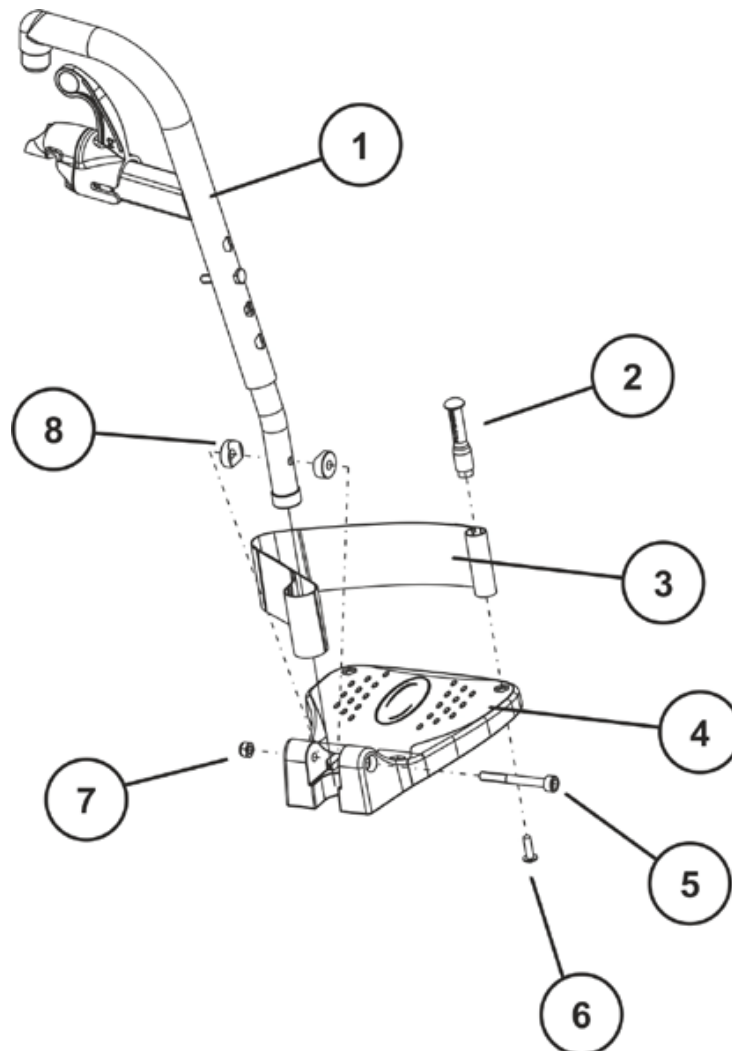
- Refit the parts in reverse order.

7.15 Replacing the foot plate/heel strap of the legrest



Requirements:

- 6 mm Allen key
- Phillips screwdriver, size 2



Dismantling the foot plate/heel strap:

- Loosen and remove the Allen screw (5) including circular washers (8) and nut (7) on the left with a 6 mm Allen key.
- Remove the heel strap (3) of the legrest (1).
- Loosen the screw (6) with Phillips screwdriver and remove it together with the plastic sleeve (2).
- Replace the footrest (4) and, if necessary, the heel strap (3).

Refitting the foot plate/heel strap:

- Refit the parts in reverse order.
- Ensure that the round disk (8) is in the correct position.

8 Installing accessories

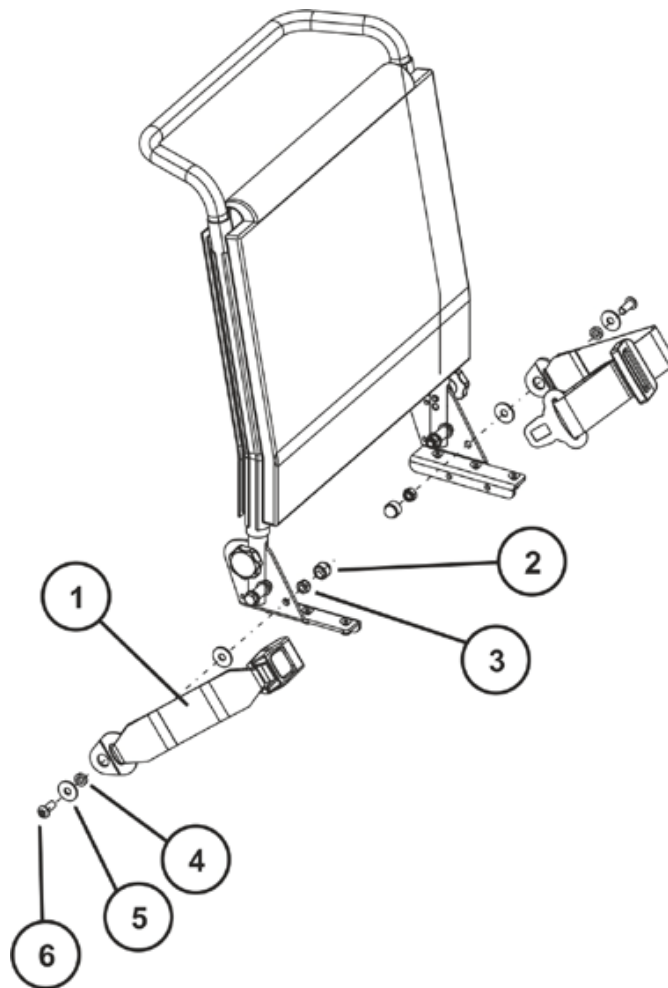
8.1 Replacing the holding strap

**Requirements:**

- 13 mm open-ended spanner
- 5 mm Allen key

**Note**

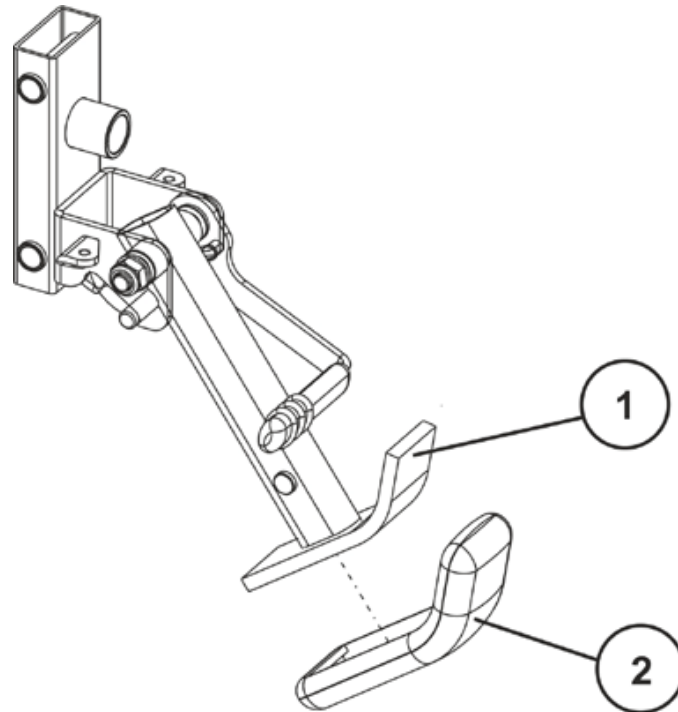
A spacer washer (4) is fixed between the two washers so that the belt mounting can rotate freely.



- Remove the plastic cap (2).
- Loosen the screw (6) and the associated nut (3) with a 5 mm Allen key and a 13 mm open-ended spanner.
- Remove the nut (3).
- Remove the screw (6) including safety belt and flat washers (2) and (4).
- Replace the safety belt (1)
- Refit the parts in the reverse order.

8.2 Curb climber

8.2.1 Replacing the positioning shoe



- Remove the legrests.
- Pull the positioning shoe (2) off the curb climber (1) in a forward direction.
- Slide a new positioning shoe onto the curb climber.
- Refit the legrests.

8.2.2 Replacing the curb climber



ATTENTION: Danger of crushing!

Injury hazards to hands! The gas pressure spring is under pressure!

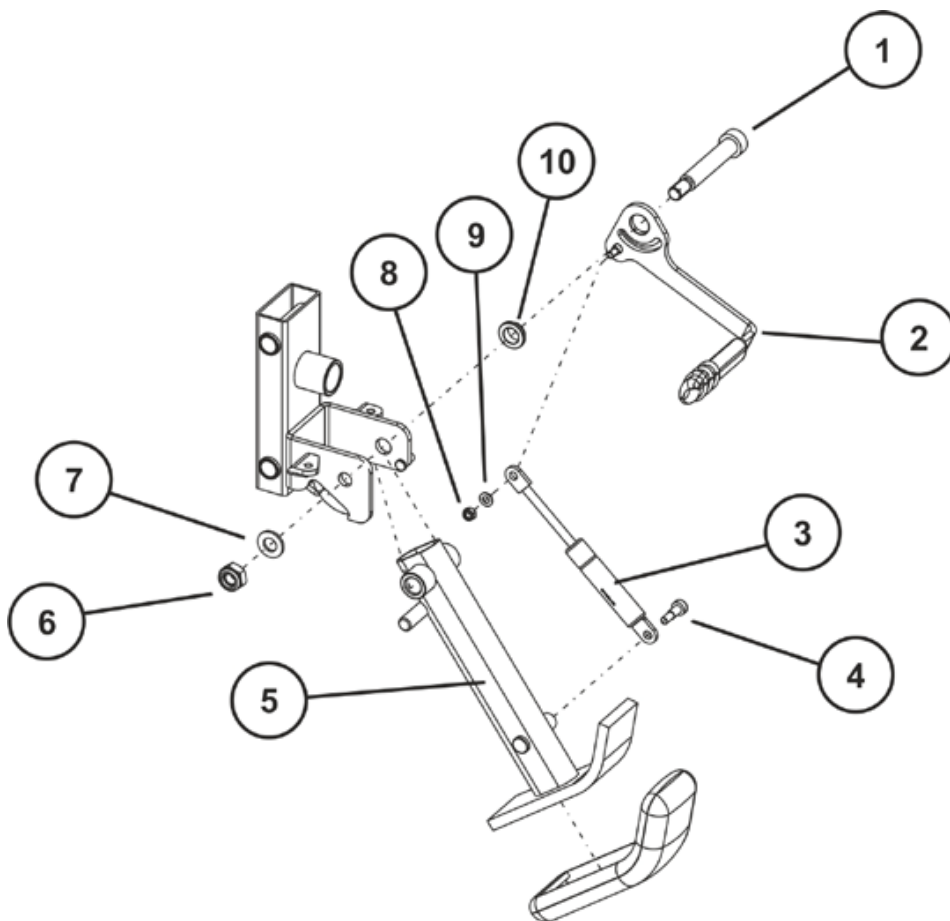
- *Take care with your hands. Use suitable tools.*



Requirements:

- 5 mm Allen key
- 13 mm open-ended spanner
- pipe wrench

- Remove the legrests.
- Dismantle the swinging axle as described in chapter 7.7.2.
- Place a wooden block approx. 14 cm high under the curb climber.



Dismantling the curb climber:

- Loosen the Allen screw (4) and use a pipe wrench to pull the gas pressure spring (3) out of its holder.
- Loosen and remove the Allen screw (1) incl. switch lever (2), bearing sleeve (10), gas pressure spring (3), washer (7) and nut (6).

The gas pressure spring (3) is fixed to the bottom part of the switch lever (2) with a washer (9) and nut (8).

**Note**

When disassembling, take care of small parts such as screws and washers. Put all small parts down so that they can be reassembled in the right sequence.

Refitting the curb climber:

- Assemble the parts in the reverse order.
- If necessary, refit the support shoe to the curb climber as described in chapter 8.2.1.
- Refit the legrests.

**Note**

When applying the correct tightening torque to the nut (6), ensure that the curb climber is seated so that it can move.

8.3 Further accessories

**Note**

The installation instructions for additional accessories are available at your Invacare® specialist supplier or directly from Invacare®.

9 Adjusting the seating position

In order to adapt the mobility device optimally to the requirements of the user, we recommend that you ask your authorised Invacare® the dealer to adjust the seat depth individually.

Adapting the seat to the user's seating position depends on which seat has been fitted, and should be carried out in the following sequence.

1. Adjusting the lower leg length and seat depth, see chapter 9.1.
2. Adjusting the seat height and seat tilt, see chapter 9.2 and chapter 9.3.
3. Adjusting the center of gravity of the seat frame, see chapter 9.4.
4. Checking that the swivel castors can move freely.
5. Repetition of steps 3 to 4, if necessary.



WARNING!

Danger of injury hazard after tilting of mobility caused by blocked steering wheels.

- *Always check the seat depth settings for both forward and reverse movement. Make sure that steering wheels can rotate freely and have not contact to any fixed mobility device component.*
-



CAUTION!

Any changes to the drive program can affect the driving characteristics and the tipping stability of the vehicle!

- *Changes to the drive program may only be carried out by trained Invacare® specialist dealers!*
 - *Invacare® supplies all mobility aids with a standard drive program ex-works. Invacare® can only give a warranty for safe vehicle driving behaviour - especially tipping stability - for this standard drive program!*
-



WARNING: Danger of crushing!

The seat is very heavy. Danger of injury to hands and feet.

- *Pay attention to the hand and feet*
 - *Use proper lifting techniques*
-

9.1 Adjusting the lower leg length and seat depth

9.1.1 Adjusting the lower leg length

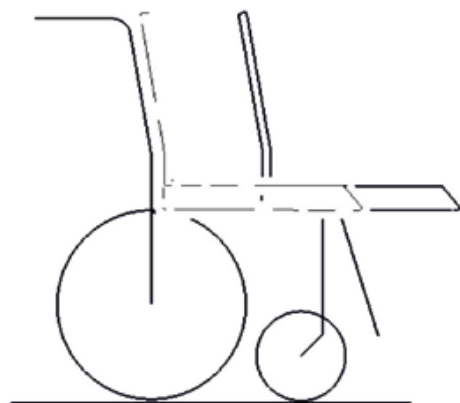
Invacare® offers a range of legrests which can be adjusted individually.

See operation manual.

9.1.2 Adjusting the seat depth



(A)



(B)

A: Seat depth

B: Center of gravity of the seat/ seat position

9.1.2.1 Adjusting the seat depth via the backrest unit (fabric seat padded)



ATTENTION: Danger of crushing!

The seat/seat support is very heavy. Danger of injury to hands and feet!

- Use proper lifting techniques



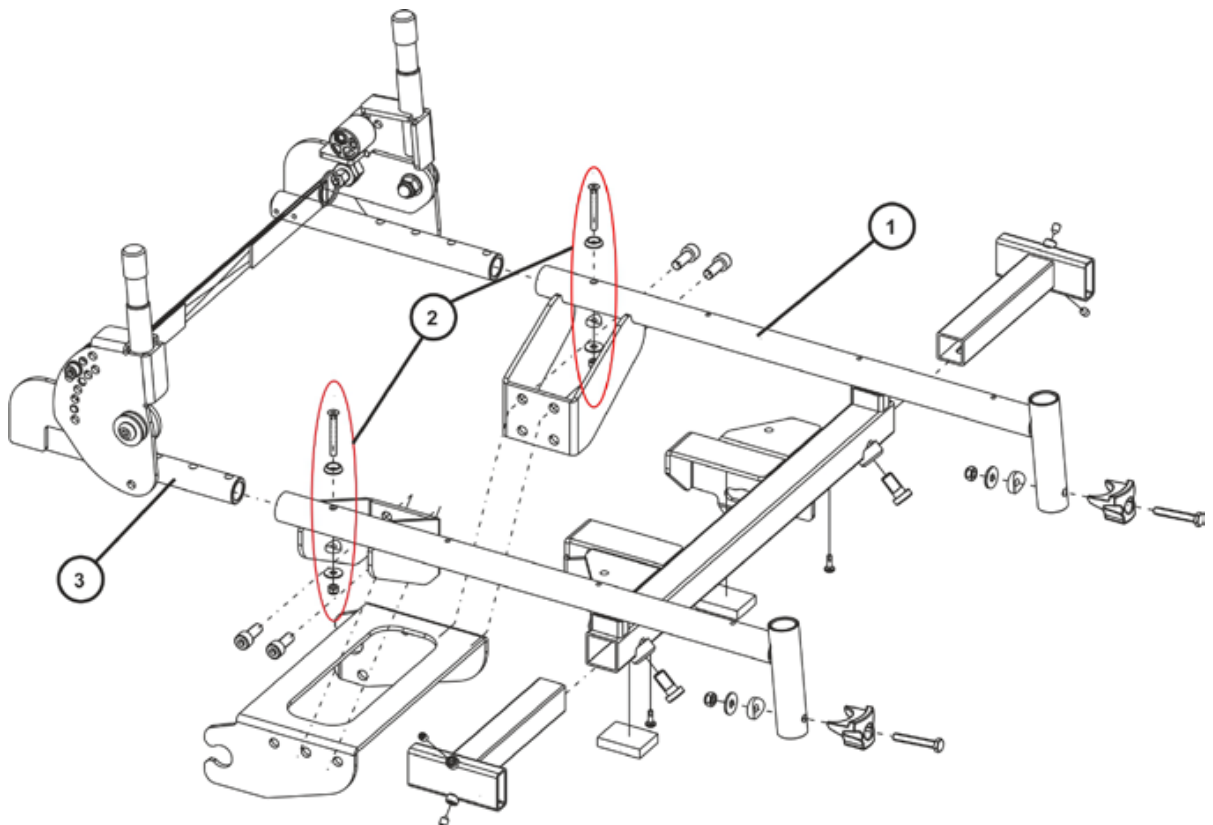
Requirements:

- Phillips screwdriver, size 2
- 8 mm open-ended spanner
- Side cutting pliers
- Cable ties



Note

When disassembling, take care of small parts such as screws and washers. Put all small parts down so that they can be reassembled in the right sequence.



- Remove the seat, as described in chapter 7.12.3.
- Push the backrest unit (3) as far as the required drill hole in the seat frames (1).
- Fix the seat as described in chapter 7.12.3.
- Fix the bolts (2) incl. rosette, round disc, washer and nut. Ensure that the round disc is fitted correctly.



Note

The screws (2) are fixed by the fabric seat (see chapter 7.12.3).

- Check all functions during a test drive.

9.1.2.2 Adjusting the seat depth via the backrest unit (fabric seat stretched)



ATTENTION: Danger of crushing!

The seat/seat support is very heavy. Danger of injury to hands and feet!

- Use proper lifting techniques



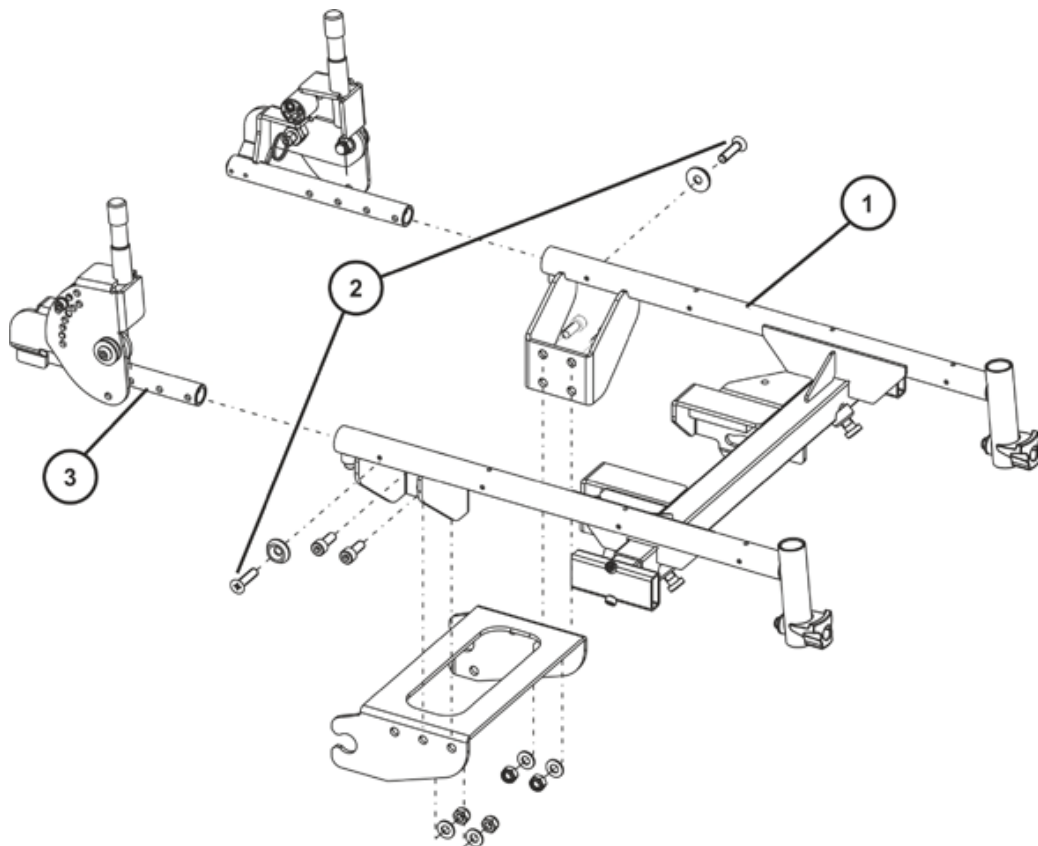
Requirements:

- Phillips screwdriver, size 2
- 8 mm open-ended spanner
- Side cutting pliers
- Cable ties



Note

When disassembling, take care of small parts such as screws and washers. Put all small parts down so that they can be reassembled in the right sequence.



- Loosen and remove the screws (2).
- Position the backrest mounting bracket (3) according to the seat depth, so that the drill hole aligns with the seat frame at (2) and (3).
- Tighten the set screw underneath the backrest mounting bracket (3) slightly.
- Insert the backrest tube into the backrest mounting bracket as described in chapter 7.13.
- Fix the seat as described in chapter 7.12.4 or 7.12.5.



Note

The screws (2) are fixed by the fabric seat (see chapter 7.12.4).

- Check all functions during a test drive.

9.2 Adjusting the seat height

9.2.1 Adjusting seat height above centre column

See user manual.

9.2.2 Adjusting seat height above seat support



ATTENTION: Danger of crushing!

The seat/seat support is very heavy. Danger of injury to hands and feet!

· Use proper lifting techniques



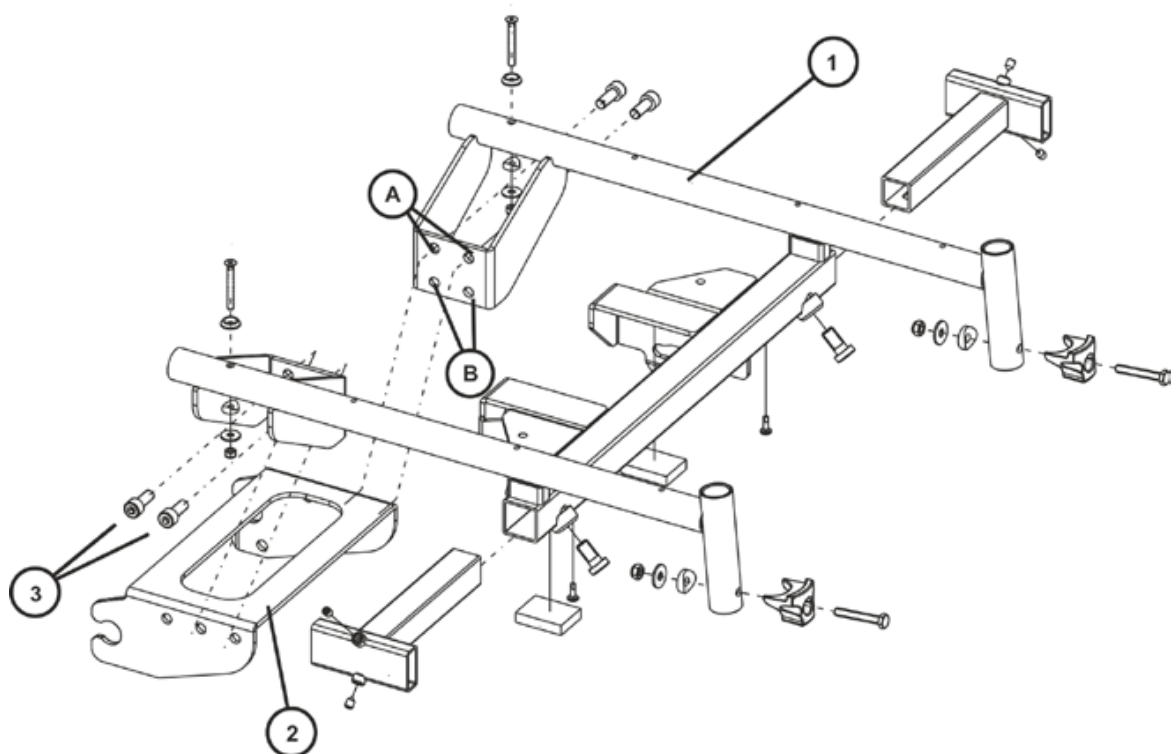
Requirements:

- 6 mm Allen key
- 8 mm open-ended spanner



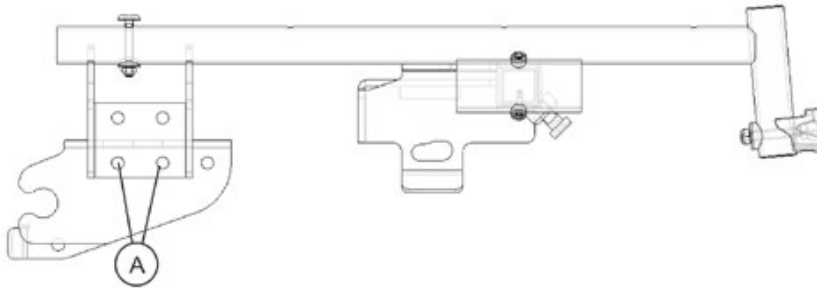
Note

When disassembling, take care of small parts such as screws and washers. Put all small parts down so that they can be reassembled in the right sequence.

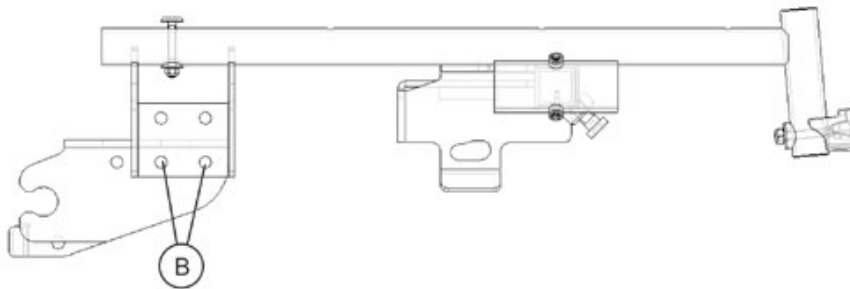


- Put the seat into the service position as described in chapter 7.12.1 and separate the seat from the chassis.
- Loosen and remove the bolts (3) with a 6 mm Allen key. Hold the nut (in the figure (2) this is covered) against turning using an 8 mm open-ended spanner. Repeat these stages on the other side of the seat frame (1).

- Fix the bolts (3) in the required drill hole (A or B).



Fixing **(A)** = short wheelbase - 51 cm seat height - high/rear



Fixing **(B)** = long wheelbase - 51 cm seat height - high/front

- Place the seat vertically onto its holder again.
- Fold the seat forwards.
- Ensure that the safety latches engage on the centre column.
- Check all functions of the vehicle and go for a test drive.

9.3 Adjusting the seat tilt

See user manual.

9.4 Adjusting the center of gravity of the seat

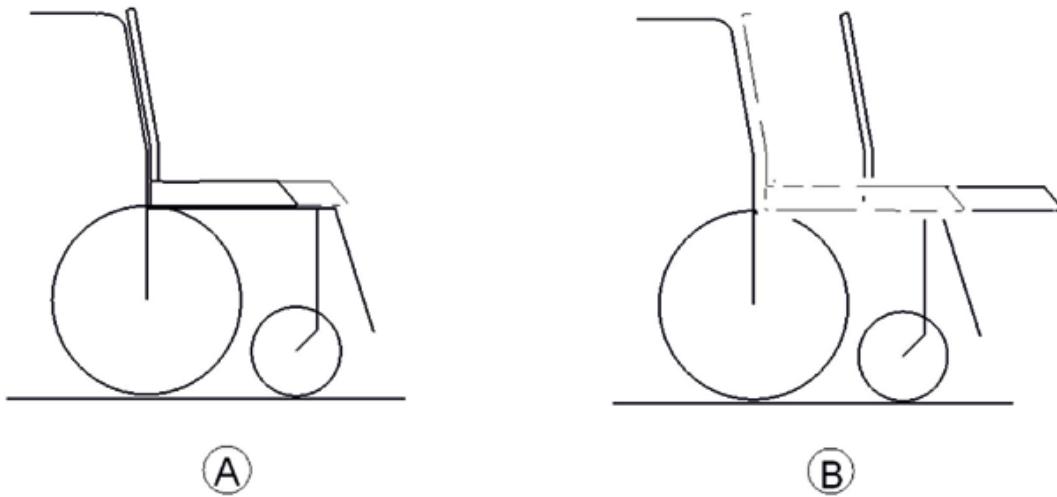
The center of gravity of the seat can be adjusted by mounting the seat frame farther towards the front or the rear on the seat.



CAUTION!

The seating system of the electric wheelchair is delivered ex works with an optimally adjusted center of gravity. Any change in this adjustment setting can negatively influence the stability of the electric wheelchair.

- *You must perform an individual risk analysis every time you change the center of gravity of the seating position, in order to ensure the safety and stability of the electric wheelchair.*

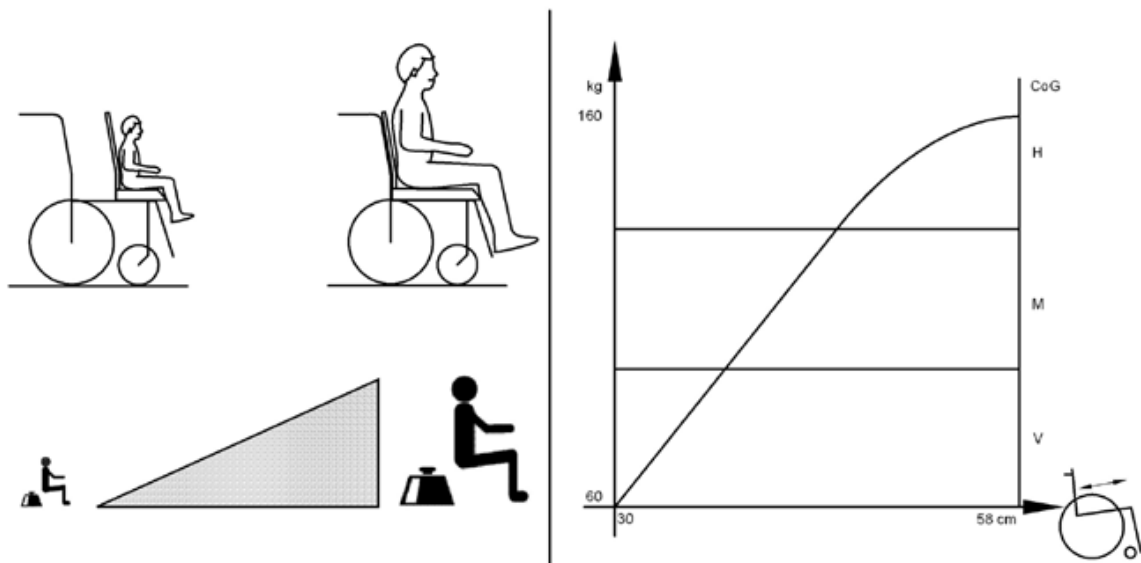


A: Seat depth
 B: Center of gravity of the seat/ seat position



Note

The user weight and seat depth have strong influences on the choice of the Center of gravity of the seat. If the user is heavy and the seat depth is greater, the focus should be the farther back.



For best possible driving characteristics of rear-wheel drive wheelchairs, the weight to be distributed: 30 – 40 % front and 60 - 70 % rear.



WARNING!

Danger of damage due to collisions of the legrests with other parts of the wheelchair!

- Set the legrests to the smallest angle before adjusting the seat center of gravity.
- Pay attention with adjusting the seat center of gravity that the legrests do not touch any other parts of the wheelchair. This ensures that the legrests can not collide with other parts of the wheelchair.

**ATTENTION: Danger of crushing!**

The seat/seat support is very heavy. Danger of injury to hands and feet!

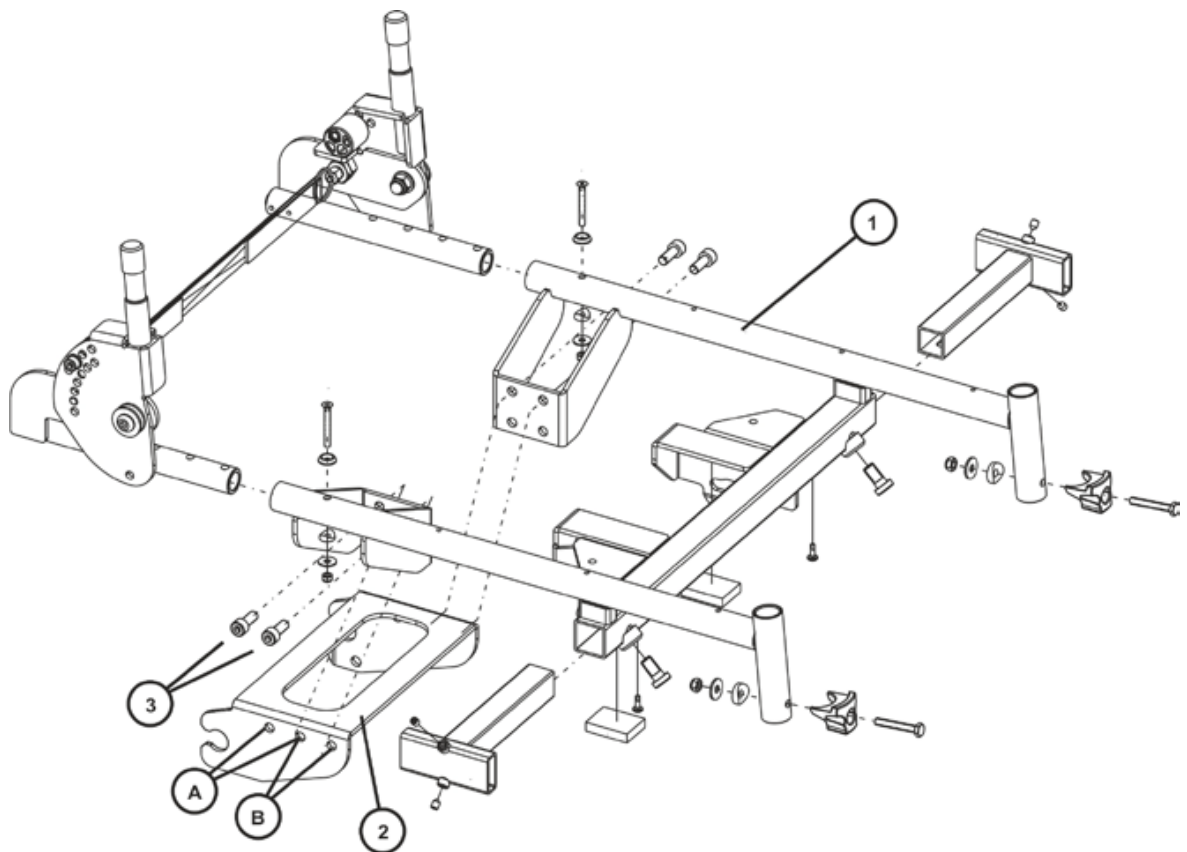
- Use proper lifting techniques

**Requirements:**

- 6 mm Allen key
- 8 mm open-ended spanner

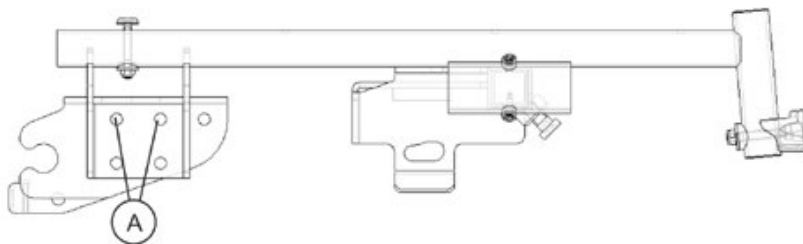
**Note**

When disassembling, take care of small parts such as screws and washers. Put all small parts down so that they can be reassembled in the right sequence.

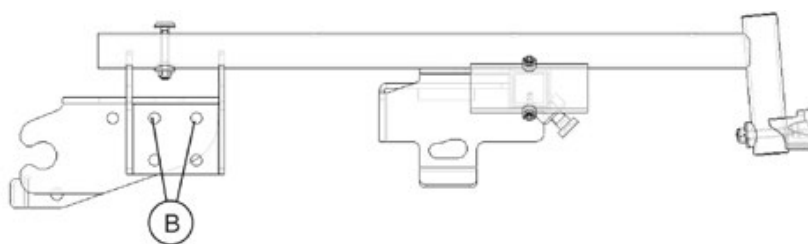


- Put the seat into the service position as described in chapter 7.12.1 and separate the seat from the chassis.
- Loosen and remove the bolts (3) with a 6 mm Allen key. Hold the nut (in the figure (2) this is covered) against turning using an 8 mm open-ended spanner. Repeat these stages on the other side of the seat frame (1).

- Fix the bolts (3) in the required drill hole (A or B).



Fixing **(A)** = short wheelbase - 48 cm seat height - deep/rear



Fixing **(B)** = long wheelbase - 48 cm seat height - deep/front

- Place the seat vertically onto its holder again.
- Fold the seat forwards.
- Ensure that the safety latches engage on the centre column.
- Check all functions of the vehicle and go for a test drive.