




# Carl-Oskar

 To secure that the walking-aid will function safely for the user, once per year review of the walking-aid should be done. Therefore is the following interventions recommended.

**Cleaning**

When cleaning the walker it is recommended machine washing, 60 degrees for 10 minutes. When using a pressure washer, do not wash directly to the bearings. In addition to machine washing, regular cleaning with a mild cleanser is recommended. **Note!** Do NOT use thinner, petrol or other solvents.

**Post treatment**

After washing, all connections, tight spaces and drainage holes should be blown dry and sprayed with thin oil. If degreaser is used, should the moving parts be lubricated.

**The Paint**

Control damages to the paint. To prevent corrosion, improve scratches. Touch-up paint can be ordered from Human Care HC AB.

**Pipe frame**

Control weldings and screw attaches. If the corrosion is extensive shall the rollator be replaced.



**Handle**

Must be fixed. Make sure the handle pipes can be pushed down to the chassis. Change the grip if needed.

**Brakes**

Control that both brakes and parkingbrakes are working. Wires should be intact and stapped to the chassis.

**Wing nut**

Control function.

**Reflectors**

Make sure the reflectors are still there and visible.

**CE-marking**

Make sure that the CE-marking is still there and readable.

**Wheels**

Make sure the wheels are not worn-out and are spinning easily without any noise.

**Lubrication**

Gatebushings and hinges should be working without any noise. Lubricate when needed.

**Front forks**

Make sure that the ball bearings is firmly attached. Check the front fork inertia by allowing the wheel to swing between 3 and 9 o'clock. Both wheels shall swing 3 to 10 times with max 2 swings difference between each wheel. The inertia can be adjusted by adjusting the nut on the top under the hub cover. **Note!** The nut on the inside of the fork must not be touched.

**Folding mechanism**

Should be intact and the locking should function.

**Seat**

Make sure the seat is kept in place and screws are tightened.

**Stability**

Control that all wheels are steadily on the ground and that there are no chassis distortion.

**Test driving**

Make a final control by test driving.



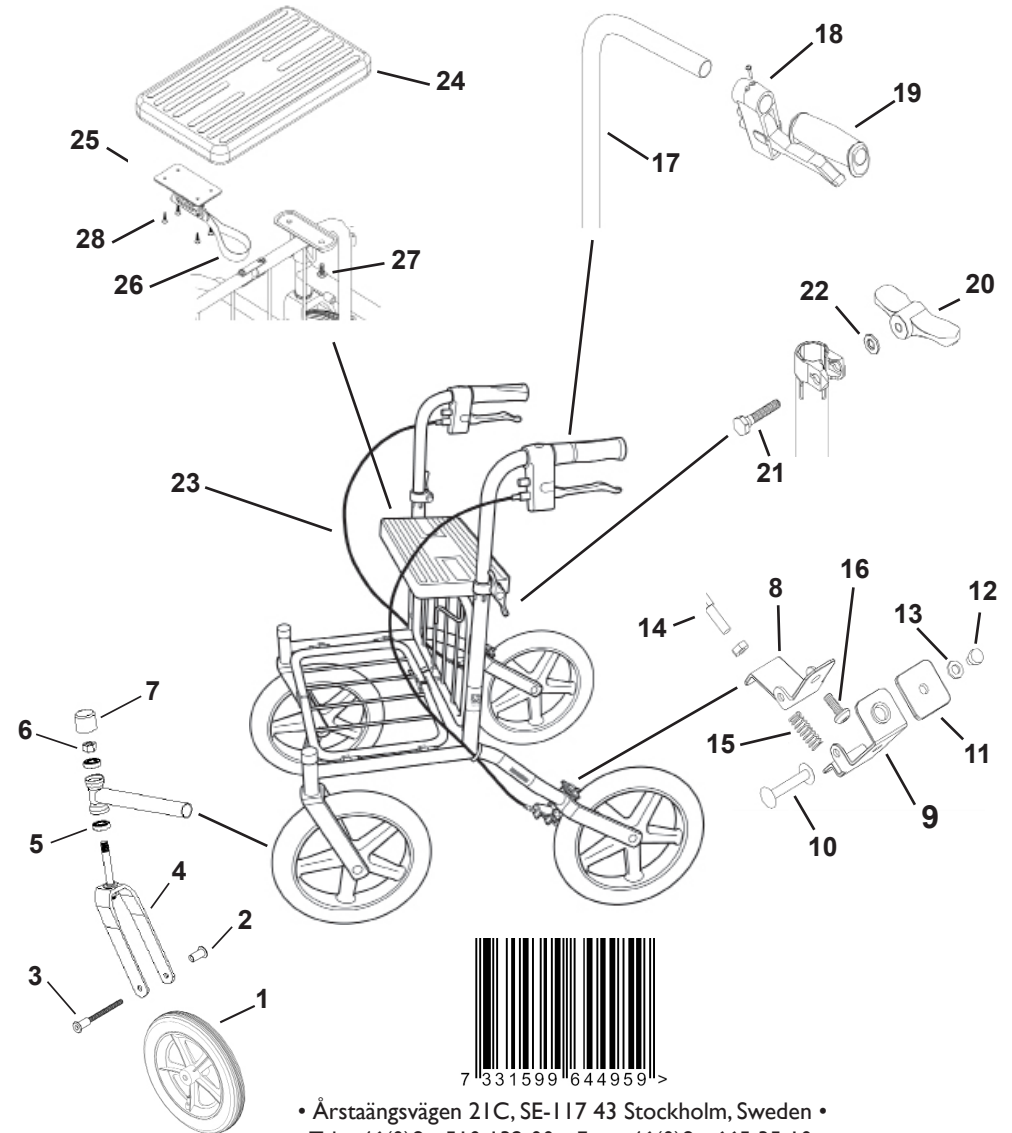


# RECONDITIONING MANUAL

23	<b>Wire complete</b>	2	<b>89050</b>	
	Wire housing	2		
	Wire	2		
	Wire lock	2		
	Wire end	2		
	<b>Seat kit</b>	1	<b>89020</b>	<i>Not for Carl-Oskar reinforced.</i>
24	Seat	1		
25	Gate lock	1		
26	Fold loop	1		
27	Screw M6x20	2		
28	Screw to gate lock	4		
	<b>Seat complete</b>	1	<b>89070</b>	<i>Not for Carl-Oskar reinforced.</i>
24	Seat	1		
27	Screw M6x20	2		
	Tube protection	1	50949	
26	Fold loop	1	10-009	
	<b>Gate lock kit</b>	1	<b>10-018</b>	
25	Gate lock	1		
28	Screw to gate lock	4		
26	Fold loop	1		
	Reflex	2	00028	
	Touch-up paint		F2	

## Spareparts reinforced Carl-Oskar (Art. no 61225, 61325, 61425)

	<b>Rear wheel kit</b>	2	<b>89089</b>	<i>Pin bolt and wheel nut must be exchanged when disassembling the wheel.</i>
1	Complete wheel	2		
2	Wheel nut	2		
	Pin bolt	2		
	<b>Rear wheel kit air pumped</b>	2	<b>89088</b>	<i>Pin bolt and wheel nut must be exchanged when disassembling the wheel. Tyre pressure max 2,0 bar.</i>
	Complete wheel	2		
2	Wheel nut	2		
	Pin bolt	2		
	Handle	2	89033	<i>When changing the handle, the upper part of the reinforcement beam must be removed.</i>
	<b>Pin bolt &amp; wheel nut for rear wheel</b>	2	<b>89091</b>	<i>Pin bolt and wheel nut must be exchanged when disassembling.</i>
2	Wheel nut	2		
	Pin bolt	2		



• Årstaängsvägen 21C, SE-117 43 Stockholm, Sweden •  
 • Tel. +46(0)8 - 510 132 00 • Fax +46(0)8 - 665 35 10 •  
 • www.humancaregroup.com •