



POLISH CENTRE FOR TESTING AND CERTIFICATION

02-699 Warszawa, ul. Kłobucka 23A

Mechanical Laboratory

tel.: (+48 22) 46 45 594; fax: (+48 22) 46 45 563

e-mail: labmech@pcbc.gov.pl

Date: 3.02.2011

TEST REPORT NO. BR – 008/L-011/2011

Page 1 of 4

Subject of testing:	<i>Ramp</i> <i>Alligator Ramps-TSR Ramps</i>	Classification according to PN-EN ISO 9999:2007 : <i>18 30 15</i>
Manufacturer :	<i>MOBILEX A/S, Noerskovvej I</i> <i>DK - 8660 Skanderborg</i>	Catalogue no.: -- Number of specimens : 1
Applicant:	<i>A-Net s.c. 93-469 Łódź,</i> <i>ul. Łaskowice174</i>	
Kind of testing	<i>Testing scope according to application of Client</i> <i>Mechanical testing for conformity with PN-EN 12182:2005</i> <i>excluding clause 4.1, 4.3, 5.2, 22, 24</i>	

Test started: 18.01.2011

Test finished : 3.02.2011

Performed by:

Mirosław Szymański

Checked by :

Ireneusz Czerwiński

Approved by :

KIEROWNIK
LABORATORIUM MECHANICZNEGO

mgr Inż. Andrzej Tkaczyk

Special comments / enclosures:

Copyright © 2005 by Polish Centre for Testing and Certification (applicable to report form)

Test results refer only to tested units.

Test results reported here are not applicable to the further modifications of the product affecting its structure, material or technology.

This test report shall be neither copied differently as in the whole nor be published without written consent of the Laboratory.



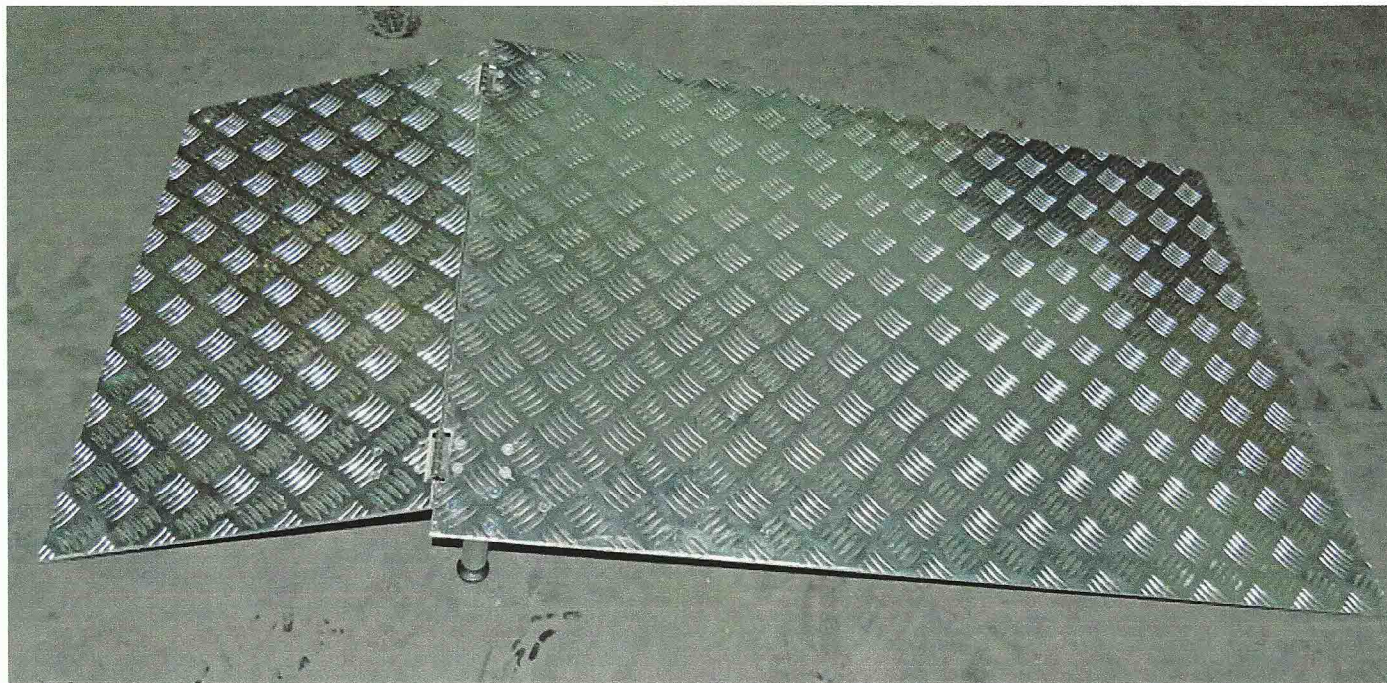
TESTING

NORMATIVE REFERENCES

PN-EN 12182:2005 Technical aids for disabled persons – General requirements and test methods

NOTE: During visual inspection before testing any visible defects that could have influence on test results were not stated.

PHOTO OF PRODUCT

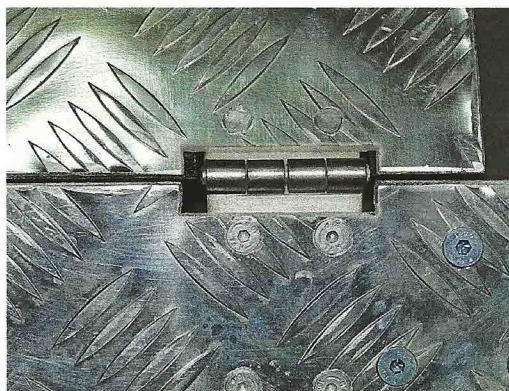



Mobilex
MOBILEX A/S
Nørskovvej 1
DK - 8660 Skanderborg
Tel: +45 87 93 22 20
www.mobilex-care.com

Doorstep ramp



Max. 225 kg




Warning!
Be Careful!
Risk of finger cut!

CHARAKTERISTICS OF PRODUCT

Name of product: Ramp <i>Alligator Ramps- TSR Ramps</i>	Max. load: 225 kg	Mass of product: 15,6 kg
Dimensions:		
Total Length:	1400 mm	
Total Width:	700 mm	
Width of bridge platform:	650 mm	
Length of bridge platform:	400 mm	
Max. elevation / Height difference:	200 mm	
Legs height adjustment range:	150 mm - 225 mm	
Material:	Aluminum alloy, steel	



TEST RESULTS according to PN-EN 12182 : 2005

Requirements according to clause	Test method according to clause	Checked characteristics/assemblies/parameters	Real value	Test result	Comments	
4.1	5.2, 5.4.2, 5.5, 6, 8.2.1, 9.4, 10, 22, 24 i EN 1441	Risk analysis	-	N/T		
4.2	V/I	Expected characteristics and technical documentation	Conf.	Pos.		
4.3	EN-540	Clinic assessment	-	N/T		
4.4	V/I	Technical support which can be dismantled	Conf.	Pos.		
4.5	V/I	Single use connections	Conf.	Pos.		
4.6	V/I	Boundary values of user weight	Conf.	Pos.		
5.1	V/I	Flammability	-	N/A		
5.2	EN ISO 10993-1	Biological conformity and toxicity	-	N/T		
5.3	V/I	Impurities and residues	-	N/A		
5.4	24, Annex.C C.5.4.1	Microbiological infections and contamination	Cleaning	Conf.	Pos.	
	24, Annex.C C.5.4.1		Disinfection	-	N/A	
	EN 12442-1		Animal tissue	-	N/A	
6	Measur.	Noise	-	N/A		
7	Measur.	Electromagnetic compatibility	-	N/A		
8	EN60601-1 EN60335-1	Electrical safety	-	N/A		
9	V/I	Overflowing, pouring out, leakage and pouring in of liquids	-	N/A		
10	V/I. Measur.	Surface temperature	-	N/A		
11	V/I	Sterility	-	N/A		
12	V/I. Measur.	Safety of moving elements	Conf.	Pos.		
13	V/I. Measur.	Trap prevention for parts of human body	Conf.	Pos.		
14	V/I	Folding and adjusting of mechanisms	Conf.	Pos.	Warning in the Manual and on the product	
15	V/I. Measur.	Hand grips for transferring	-	N/A		
16	V/I. Measur.	Aids for support of users	Sustained deformation 1,6mm Elastic deformation 22mm	Pos.	Loading – 337,5 kg	
17	V/I	Portable and moving technical aids	-	N/A		
18	V/I	Surfaces, corners and edges	Conf.	Pos.		
19	Annex.C,C18	Hand kept technical aids	-	N/A		
20	V/I	Grips and other elements for transferring	-	N/A	Mass of product below 20kg	
21	V/I	Force action on soft tissues of human body	-	N/A		
22	Annex.C22	Ergonomic principles – action force	-	N/T	The requirements relate to the design process	
23	V/I	Information provided by manufacturer	Conf.	Pos.		
24	V/I	Package	-	N/T	Note 1	

Pos. – positive; Neg – negative; N/T – not tested; N/A – not applicable; N/R – not required, N/O – not occurred, V/I.- visual inspection, Conf.- conformed.

NOTE 1: Assessment of package , clause 24 concerns risk of threats caused by improper protection against damage, fall or impurity during storage and transport to place of use

NOTE 2: Risk analysis performed by the manufacturer should take into account requirements of PN-EN 12182:2005 clause 5.2, 5.4.2, 5.5, 6, 8.2.1, 9.4, 10, 22, 24

NOTE 3: Conformity assessment of product according to standard requirements refer to the scope of mechanical tests ordered by client

CONCLUSIONS:

Testing object conforming with requirements of PN-EN 12182 :2005, excluding clause 4.1, 4.3, 5.2, 22, 24

---END---