

## What we do:

Test and evaluate mattresses according following well accepted thesis:

### 1. Peak pressure

In 1930 Eugene M. Landis showed, by direct measurement of the capillary finger circuit, that the pressure at the entrance to the capillaries (arterioles) was 32 mm Hg. Therefore, it was concluded that external pressure against the tissue should be kept below the value if pressure ulcers should be avoided.

This thesis has been modified during the years but is still regarded as an instructive rule and guide line for evaluation of mattresses. The lower the peak pressure the better the mattress.

### 2. Peak and average pressure

Low uniform pressure, where differences between peak and average pressure are as low as possible, creates a feeling of great comfort. When pressure mapping the variability, or dispersion, of individual sensor values around the average pressure value, is a clear indication of the mattress's comfort level, the lower the value the better the comfort.

## Our tools:

For evaluation purpose we use the well know and accepted pressure mapping system from:

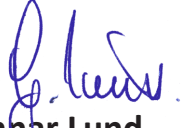
Vista Medical Ltd.

Corporate Head Office

Unit # 3 - 55 Henlow Bay

Winnipeg, Manitoba

R3Y 1G4

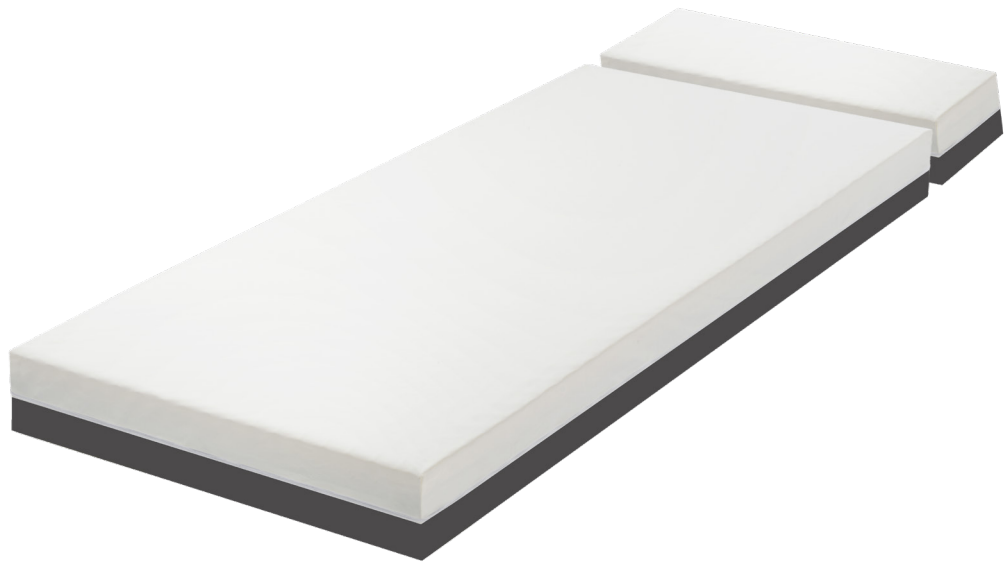


**Gunnar Lund**  
Ebeltoft 11-01-2019

## This Evaluation was conducted on the 04-01-2019

Customer: RotoBed

Mattress: RotoBed ErgoSleep



### On the next two pages you will find

- 1) The result of this test and for comparison
- 2) pressure mapping test performed on reference mattress with same test person

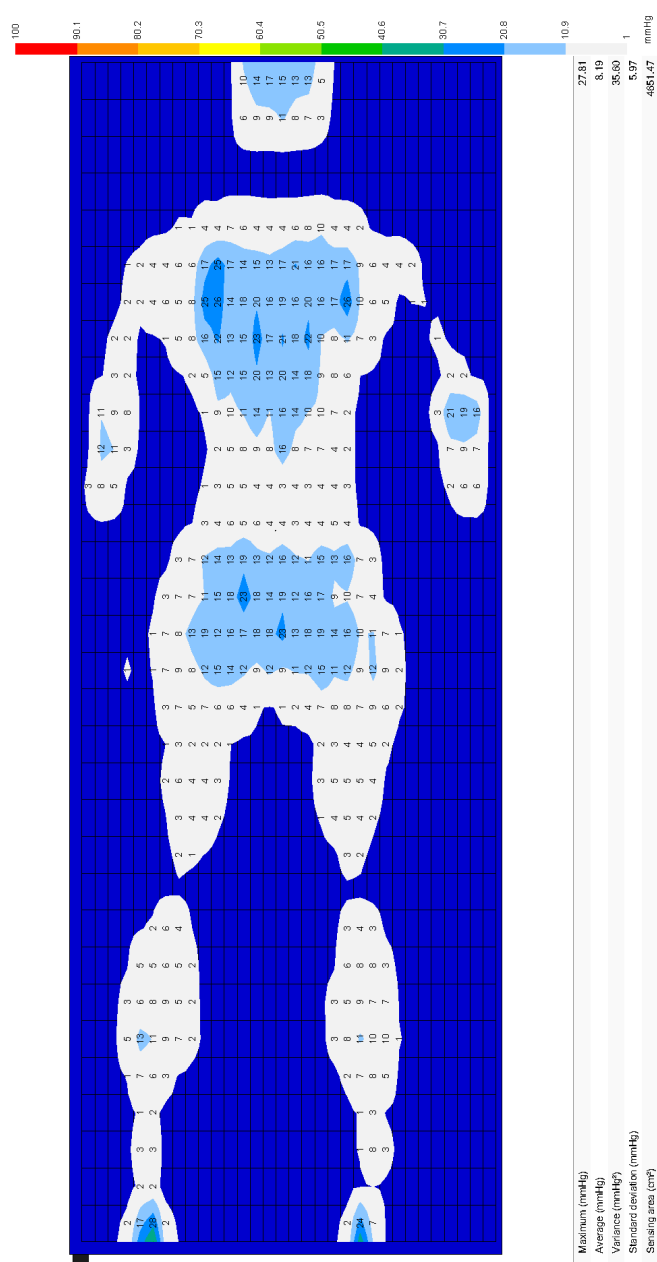
## Result of measurement RotoBed ErgoSleep

Maximum (mmHg)	27,81
Average (mmHg)	8,19
Variance (mmHg <sup>2</sup> )	35,60
Sensing area (cm <sup>2</sup> )	4651,47

Bed

Dato: 2019-01-04  
 Trykmløring udført af Raskov .Co. for RotoBed  
 Produkt: RotoBed ErgoSleep  
 Mand  
 højde: 200 cm  
 vægt: 82 Kg  
 BMI: 20,5

4. januar 2019 12:01:13,236



## Result of measurement Standard Hospital mattress HR38

Maximum (mmHg)	87.69
Average (mmHg)	14.97
Variance (mmHg <sup>2</sup> )	195.53
Sensing area (cm <sup>2</sup> )	4986.56

Referencemadras: Standard hospitalmadras HR38 -150  
 På madrassen: Mand 184 cm, 77 kg, BMI 22,74  
 Målingen udført af Raskov og Co den 4. november 2012

4. november 2012 12:42:44,235

